

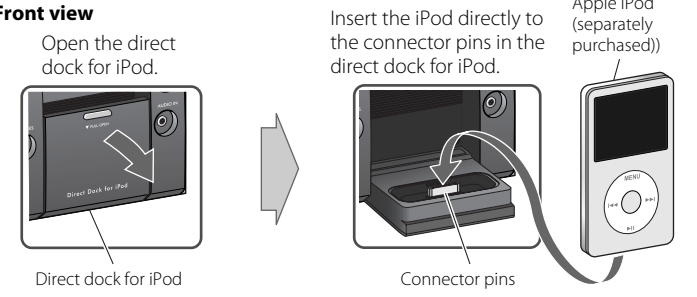




Listening to an iPod

The following operations are explained using the remote control, unless mentioned otherwise. However, if the System has the same or similar button names, they can also be used for the operations.

Connecting an iPod



- Be sure to reduce the volume on the System to the minimum level before connecting an iPod. Adjust the volume after starting playback.
- DO NOT connect or disconnect the iPod when the System is turned on.
- You cannot send any data to your iPod from the System.
- Do not carry the System with iPod dock open and iPod is connected. You might drop it or it might cause damages to the iPod dock.
- Do not touch or hit the iPod terminal pins or connector pins in the iPod dock directly. It might cause damages to the connector part.

Basic iPod Operations

To	Press	Indication/Result
Play back an iPod		The System detects the iPod and starts playback. • <b>To turn off the iPod</b> , press and hold for more than 2 seconds.
Select a track	or	Select the next tracks. • Press and hold to fast-forward the track during playback. <b>To stop searching</b> , release the button.
		To go back to the beginning of the current or previous tracks. • Press and hold to fast-reverse the track during playback. <b>To stop searching</b> , release the button.
Change the charge mode (on the System only)		Press and hold while "iPod" is selected as the source. To select the charge mode: → P. ON → P. OFF → <b>P. ON:</b> The battery in the iPod is charged through the iPod terminal when "iPod" is selected as the source or during Standby Mode. <b>P. OFF:</b> The battery is not charged.

To	Press	Indication/Result
Display the menu/Go back to the previous menu		—
Select an item on the menu	or	• The UP/DOWN buttons work in the same way as operating the iPod's click wheel counterclockwise/clockwise. (Refer to the iPod's instruction manual for details.)
Play back at random		• Refer to the iPod's instruction manual for details.
Play back repeatedly		• Refer to the iPod's instruction manual for details.
Turn on iPod's backlight		Press and hold for 2 seconds.

Listening to FM and AM Broadcasts

The following operations are explained using the remote control, unless mentioned otherwise. However, if the System has the same or similar button names, they can also be used for the operations.

Basic Tuner Operations

To	Press	Indication/Result
Select FM or AM		Press repeatedly. • The selected frequency band appear.
Select a frequency		Press and hold for more than 2 seconds. The System starts searching for stations and stops when a station of sufficient signal strength is tuned in. • If an FM program is broadcast in stereo, the S (stereo) indicator lights up (only when the reception is good). • Press during searching to stop. • Press repeatedly to change the frequency step by step.
Tune in to a preset station		Press to select its preset number. • For presetting stations, see below.
Change the FM reception mode (When an FM stereo broadcast is hard to receive)		Press to improve reception. The M (mono) indicator lights up. Stereo effect will be lost. <b>To restore the stereo effect</b> , press again.

Presetting Stations

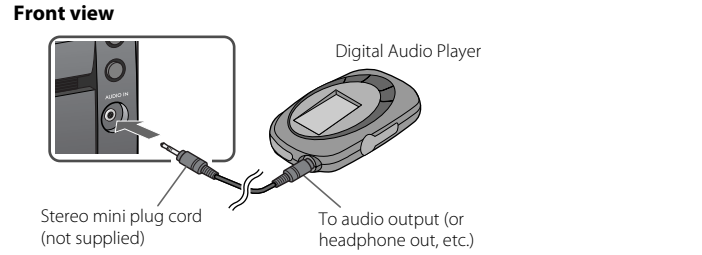
You can preset 30 FM and 15 AM stations manually.

- 1 Tune in to a station you want to preset.
  - You can also store the FM reception mode.
- 2 Press to activate the preset number entry mode.
  - Finish the following steps while the indication on the display is flashing.
- 3 Press to select a preset number for the station you want to store.
- 4 Press to store the station.

Listening to Digital Audio Player

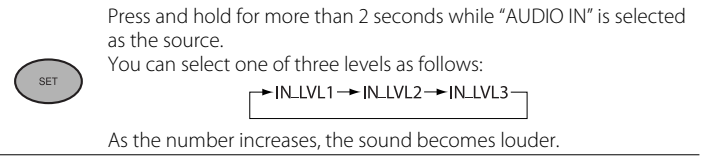
The following operations are explained using the remote control, unless mentioned otherwise. However, if the System has the same or similar button names, they can also be used for the operations.

Listening to Digital Audio Player



- 1 Turn the volume to minimum.
- 2 Press repeatedly to select "AUDIO IN."
- 3 Start playing the Digital Audio Player connected.
- 4 Adjust the volume.

**To Adjust the Audio Input Level**  
If the sound from the Digital Audio Player connected to the AUDIO IN jack is too loud or too quiet, you can change the audio input level through the AUDIO IN jack (without changing the volume level).



Learning More about This System

Basic and Common Operations (see page 3)

- Pressing one of the source buttons also turns on the System and starts playing back if the source is ready or connected.

Playing Back a Disc (see page 4)

- This System cannot play "packet write" discs.
- For MP3/WMA playback...
  - In this manual, "file" and "track" are interchangeably used for MP3/WMA operations.
  - This System can show the Tag data (Version 1).
  - MP3/WMA discs are required a longer readout time than regular CDs. (It depends on the complexity of the group/file configuration.)
  - Some MP3/WMA files cannot be played back and will be skipped. This result from their recording processes and conditions.
  - When making MP3/WMA discs, use ISO 9660 Level 1 or Level 2 for the disc format.
  - This System can play back MP3/WMA files with the extension code <mp3> or <.wma> (regardless of the letter case—upper/lower).
  - It is recommended that you make each MP3/WMA file at a sampling rate of 44.1 kHz and at bit rate of 128 kbps. This System cannot play back files made at bit rate of less than 64 kbps.
  - Playback order of MP3/WMA tracks may be different from the one you have intended while recording. If a folder does not include MP3/WMA tracks, they are ignored.
- This System can recognize up to 99 groups in a disc. The total number of groups and tracks (in a disc) that can be recognized by the System is 512 (for MP3/WMA).

Playing Back an iPod (see page 5)

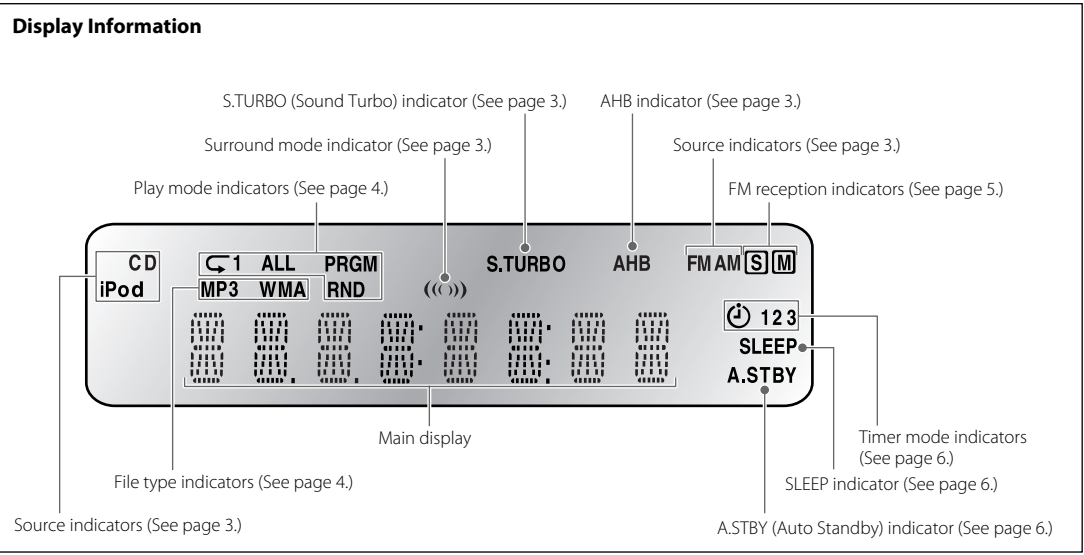
- Compatible iPod:
  - iPod nano 1GB/2GB/4GB
  - iPod nano (2nd Generation) 2GB/4GB/8GB
  - iPod nano (3rd Generation) 4GB/8GB
  - iPod mini 4GB/6GB
  - iPod (4th Generation) 20GB/40GB
  - iPod photo (4th Generation) 20GB/30GB/40GB/60GB
  - iPod video (5th Generation) 30GB/60GB/80GB
  - iPod touch (1st Generation) 8GB/16GB
- If incompatible iPod type is connected, the iPod may not be operated from the System. To enable the operation, before connecting the iPod, switch the charge mode to "OFF" (see page 5) with "iPod" selected as source.
- Sound distortion may occur when playing back audio sources with high recording levels. When distortion occurs, it is recommended to turn off the equalizer of the iPod. For information on operating the iPod, see the iPod instruction manual.

Setting the Clock and Using Timers (see page 6)

- You can set the clock and Daily Timer while the Save Mode is turned on. While setting the clock or Daily Timer, the display is turning on.
- The clock may gain or lose 1 to 2 minutes per month. If this happens, readjust the clock.
- When you unplug the AC power cord or if a power failure occurs, the clock and the timer will be canceled. You need to set the clock first, then the timer again.

Timer Priority:

- If you set the Sleep Timer after Daily Timer starts playing the selected source, Daily Timer is canceled.



Setting the Clock and Using Timers

The following operations are explained using the remote control, unless mentioned otherwise. However, if the System has the same or similar button names, they can also be used for the operations.

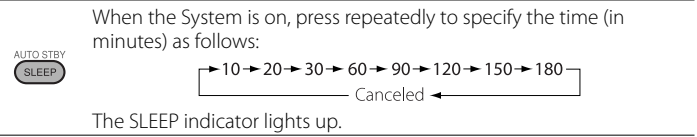
Setting the Clock

Without setting the built-in clock, you cannot use Daily Timer and Sleep Timer.  
• "0:00" flashes on the main display until you set the clock.

- 1 Press to activate the clock setting mode.
- 2 Adjust the hour, then the minute.

- To exit from the clock setting, press CLOCK/TIMER as required.
- To go back to the previous step, press CANCEL.

Setting the Sleep Timer



- To check the remaining time until the System shuts off, press once.

Setting the Daily Timer

Using Daily Timer, you can wake up with your favorite music.  
• You can store three Daily Timer settings; however, you can activate only one of the Daily Timers.

- 1 Press repeatedly to select one of the timer setting modes you want to set—DAILY 1 ON time, DAILY 2 ON time, or DAILY 3 ON time—as follows:
- 2 Adjust the hour then the minute for on-time.  
  - ① Adjust the hour then the minute for on-time.
  - ② Adjust the hour then the minute for off-time.
  - ③ Select the playback source—"TUNER-FM," "TUNER-AM," "DISC," "AUDIO IN," or "iPod."
  - ④ For "FM/AM": Select a preset channel.
  - ⑤ Select the volume.
    - You can select the volume level ("VOLUME 0" (VOL MIN) to "VOLUME 40" (VOL MAX) and "VOLUME --"). If you select "VOLUME --", the volume is set to the last level when the System is turned off.
- 3 Turn off the System (on standby).
  - When the on-time comes, the System sets the volume gradually to the preset level.

- To exit from the timer setting, press CLOCK/TIMER as required.
- To correct a misentry during the process, press CANCEL. You can return to the previous step.

To Turn Off the Daily Timer

- ① Press repeatedly to select "DAILY 1," "DAILY 2," or "DAILY 3."



To turn on the Daily Timer again, select one of the timer settings by pressing CLOCK/TIMER, then press SET.

Turning Off the System Automatically —AUTO STANDBY function (only for Disc/iPod)

- Press and hold until the ASTBY indicator lights on the display.
- The ASTBY indicator starts flashing after playback stops.
- If no operation is done for about 3 minutes, the System turns off.
- Not applicable for FM/AM/AUDIO IN.

To cancel this function, press and hold again.

Precautions

Notes on the power cord

- When you are away on travel or otherwise for an extended period of time, remove the plug from the wall outlet.
- When unplugging the System from the wall outlet, always pull the plug, not the power cord.
- Do not handle the power cord with wet hands.
- Disconnect the power cord before cleaning the System or moving the System.
- Do not alter, twist or pull the power cord, or put anything heavy on it, which may cause fire, electric shock, or other accidents.
- If the cord is damaged, consult a dealer and have the power cord replaced with a new one.

Avoid moisture, water, dust, and high temperatures

- Do not place the System in moist or dusty places.
- If water gets inside the System, turn off the power and remove the plug from the wall outlet, then consult your dealer. Using the System in this state may cause a fire or electrical shock.
- Do not expose the System to direct sunlight or place it near a heating device.

Notes on installation

- Select a place which is level, dry and neither too hot nor too cold—between 5°C (41°F) and 35°C (95°F).
- Do not install the System in a place subject to vibrations.
- Do not put heavy objects on the System.

To prevent malfunction or damage of the System

- Do not insert any metallic objects, such as wires, hairpins, coins, etc. into the System.
- Do not block the vents.

**There are no user-serviceable parts inside. If anything goes wrong, unplug the power cord and consult your dealer.**

Maintenance

To get the best performance of the System, keep your discs and mechanism clean.

Handling discs

- Remove the disc from its case by holding it at the edge while pressing the center hole lightly.
- Do not touch the shiny surface of the disc, or bend the disc.
- Put the disc back in its case after use.
- Be careful not to scratch the surface of the disc when placing it back in its case.
- Avoid exposure to direct sunlight, temperature extremes, and moisture.

To clean the disc:

- Wipe the disc with a soft cloth in a straight line from center to edge.

Cleaning the System

- Stains should be wiped off with a soft cloth. If the System is heavily stained, wipe it with a cloth soaked in water-diluted neutral detergent and wrung well, then wipe clean with a dry cloth.
- Since the System may deteriorate in quality, become damaged or get its paint peeled off, be careful about the following:
  - DO NOT wipe it hard.
  - DO NOT wipe it with thinner or benzine.
  - DO NOT apply any volatile substance such as insecticides to it.
  - DO NOT allow any rubber or plastic to remain in contact for a long time.

Specifications

Amplifier section

OUTPUT POWER:

35 W per channel, min. RMS, driven into 4 Ω at 1 kHz with no more than 10% total harmonic distortion  
**Speakers/Impedance:** 4 Ω – 16 Ω  
**Audio input** AUDIO IN: 500 mV/50 kΩ (at "IN LVL1")  
250 mV/50 kΩ (at "IN LVL2")  
125 mV/50 kΩ (at "IN LVL3")  
iPod

Digital input:

Tuner section

**FM tuning range:** 87.5 MHz - 108.0 MHz  
**AM (MW) tuning range:** 530 kHz - 1 710 kHz

CD player section

**Dynamic range:** 88 dB  
**Signal-to-noise ratio:** 85 dB  
**Wow and flutter:** Immeasurable

iPod section

**iPod output power:** DC 5 V ~ 500 mA

Speakers

**Speaker units:** 10 cm (3-15/16 inches) cone x 1  
**Impedance:** 4 Ω  
**Dimensions (W x H x D) (approx.):** 160 mm x 250 mm x 150 mm  
(6-5/16 inches x 9-7/8 inches x 5-15/16 inches)  
**Mass (approx.):** 1.6 kg (3.6 lbs) each

General

**Power requirements:** AC 120 V ~, 60 Hz  
**Power consumption:** 20 W (power on)  
3.5 W (standby mode)  
1 W or less (Save Mode)

**Dimensions (W x H x D):** 165 mm x 251 mm x 255 mm  
(6-1/2 inches x 9-15/16 inches x 10-1/16 inches)  
**Mass:** 2.6 kg (5.8 lbs)

*Specifications and appearance are subject to change without prior notice.*

Troubleshooting

If you are having a problem with your System, check this list for a possible solution before calling for service.

General

**Power does not come on.**

- ➔ Power plug is not inserted securely. Plug in securely.

**Adjustments or settings are suddenly canceled before you finish.**

- ➔ There is a time limit. Repeat the procedure again.

**Operations are disabled.**

- ➔ The built-in microprocessor may malfunction due to external electrical interference. Unplug the AC power cord and then plug it back in.

**Unable to operate the System from the remote control.**

- ➔ The path between the remote control and the remote sensor on the System is blocked.
- ➔ The batteries are exhausted.

**No sound is heard.**

- ➔ Speaker connections are incorrect or loose.
- ➔ Headphones are connected.

**The System does not work properly.**

- ➔ Many functions of this System are implemented by microcomputers. If the System does not work correctly, disconnect the AC power cord from the wall outlet, wait for a while, and connect the cord again.

Disc Operations

**The disc does not play.**

- ➔ The disc is placed upside down. Place the disc with the label side up.
- ➔ The disc is recorded with the "packet writing (UDF file system)." It cannot be played. Check the files you want to play back.

**MP3/WMA groups and tracks are not played back as you expect.**

- ➔ Playing order is determined when the groups and tracks were recorded. It depends on the writing application.

**The disc sound is discontinuous.**

- ➔ The disc is scratched or dirty.

**The disc tray does not open or close.**

- ➔ The AC power cord is not plugged in.
- ➔ Disc ejection is prohibited (see page 4).

**JVC**

LIMITED WARRANTY

1-1 USA ONLY

[ONLY FOR PRODUCT PURCHASED IN U.S.A.]

JVC Americas Corp. (JVC) warrants this product and all parts thereof, except as set forth below ONLY TO THE ORIGINAL RETAIL PURCHASER to be FREE FROM DEFECTIVE MATERIALS AND WORKMANSHIP from the date of original purchase for the period shown below. ("The Warranty Period")

PARTS	1 YR	LABOR	1 YR
-------	------	-------	------

**THIS LIMITED WARRANTY IS VALID ONLY IN THE FIFTY (50) UNITED STATES, THE DISTRICT OF COLUMBIA AND IN THE COMMONWEALTH OF PUERTO RICO.**

WHAT WE WILL DO:

- If this product is found to be defective within the warranty period, JVC will repair or replace defective parts with new or rebuilt equivalents at no charge to the original owner. Such repair and replacement services shall be rendered by JVC during normal business hours at JVC authorized service centers. Parts used for replacement are warranted only for the remainder of the Warranty Period. All products may be brought to a JVC authorized service center on a carry-in basis.
- Color televisions with a screen size of 27" or greater qualify for in-home service. In such cases, a technician will come to your home and either repair the TV there or remove and return it if it cannot be repaired in your home.

WHAT YOU MUST DO FOR WARRANTY SERVICE:

- **Please do not return your product to the retailer.**
- **Instead, return your product to the JVC authorized service center nearest you. If shipping the product to the service center, please be sure to package it carefully, preferably in the original packaging, and include a brief description of the problem(s).** Please call 1-800-252-5722 to locate the nearest JVC authorized service center. Service locations can also be obtained from our website <http://www.jvc.com>. If your product qualifies for in-home service, the service representative will require clear access to the product.

If you have any questions concerning your JVC Product, please contact our Customer Care Center at 800-252-5722

WHAT IS NOT COVERED:

- This limited warranty provided by JVC does not cover:
  1. Products which have been subject to abuse, accident, alteration, modification, tampering, negligence, misuse, faulty installation, lack of reasonable care, or if repaired or serviced by anyone other than a service facility authorized by JVC to render such service, or if affixed to any attachment not provided with the products, or if the model or serial number has been altered, tampered with, defaced or removed;
  2. Initial installation, installation and removal from cabinets or mounting systems.
  3. Operational adjustments covered in the Owner's Manual, normal maintenance, video and audio head cleaning;
  4. Damage that occurs in shipment, due to act of God, and cosmetic damage;
  5. Signal reception problems and failures due to line power surge;
  6. User Removal Memory Devices/Video Pick-up Tubes/CCD Image Sensors are covered for 90 days from the date of purchase;
  7. Accessories;
  8. Batteries (except that Rechargeable Batteries are covered for 90 days from the date of purchase);
  9. Products used for commercial purposes, including, but not limited to rental.
  10. Loss of data resultant from malfunction of hard drive or other data storage device;

There are no express warranties except as listed above.

**THE DURATION OF ANY IMPLIED WARRANTIES, INCLUDING THE IMPLIED WARRANTY OF MERCHANTABILITY, IS LIMITED TO THE DURATION OF THE EXPRESS WARRANTY HEREIN.**

**JVC SHALL NOT BE LIABLE FOR ANY LOSS OF USE OF THE PRODUCT, INCONVENIENCE, OR ANY OTHER DAMAGES, WHETHER DIRECT, INCIDENTAL OR CONSEQUENTIAL (INCLUDING, WITHOUT LIMITATION, DAMAGE TO TAPES, RECORDS OR DISCS) RESULTING FROM THE USE OF THIS PRODUCT, OR ARISING OUT OF ANY BREACH OF THIS WARRANTY. ALL EXPRESS AND IMPLIED WARRANTIES, INCLUDING THE WARRANTIES OF MERCHANTABILITY AND FITNESS FOR PARTICULAR PURPOSE, ARE LIMITED TO THE WARRANTY PERIOD SET FORTH ABOVE.**

Some states do not allow the exclusion of incidental or consequential damages or limitations on how long an implied warranty lasts, so these limitations or exclusions may not apply to you. This warranty gives you specific legal rights and you may also have other rights which vary from state to state.

**JVC AMERICAS CORP.**  
1700 Valley Road, Wayne, New Jersey 07470  
<http://www.jvc.com>

REFURBISHED PRODUCTS CARRY A SEPARATE WARRANTY. THIS WARRANTY DOES NOT APPLY. FOR DETAIL OF REFURBISHED PRODUCT WARRANTY, PLEASE REFER TO THE REFURBISHED PRODUCT WARRANTY INFORMATION PACKAGED WITH EACH REFURBISHED PRODUCT.

For customer use:

Enter below the Model No. and Serial No. which is located either on the rear, bottom or side of the cabinet. Retain this information for future reference.

Model No. :	Serial No. :
Purchase date :	Name of dealer :