



COMPACT COMPONENT SYSTEM

MX-KC68

—Consists of CA-MXKC68, SP-MXKC68F and SP-MXKC68W

MX-KC38

—Consists of CA-MXKC38 and SP-MXKC38



Thank you for purchasing a JVC product.



For customer use
Enter below the Model No. and Serial No. which are located either on the rear, bottom or side of the cabinet. Retain this information for future reference.

Warnings, Cautions and Others

Mises en garde, précautions et indications diverses



The lightning flash with arrowhead symbol, within an equilateral triangle is intended to alert the user to the presence of uninsulated "dangerous voltage" within the products enclosure that may be of sufficient magnitude to constitute a risk of electric shock to persons. The exclamation point within an equilateral triangle is intended to alert the user to the presence of important operating and maintenance (servicing) instructions in the literature accompanying the appliance.

Precautions

Notes on the power cord

- When you are away on travel or otherwise for an extended period of time, remove the plug from the wall outlet. A small amount of power (less than 1 W) is always consumed while the power cord is connected to the wall outlet.
- When unplugging the System from the wall outlet, always pull the plug, not the power cord.
- Do not handle the power cord with wet hands.
- Disconnect the power cord before cleaning the System or moving the System.
- Do not alter, twist or pull the power cord, or put anything heavy on it, which may cause fire, electric shock, or other accidents.
- If the cord is damaged, consult a dealer and have the power cord replaced with a new one.

Avoid moisture, water, dust, and high temperatures

- Do not place the System in moist or dusty places.
- If water gets inside the System, turn off the power and remove the plug from the wall outlet, then consult your dealer. Using the System in this state may cause a fire or electrical shock.
- Do not expose the System to direct sunlight or place it near a heating device.

Notes on installation

- Select a place which is level, dry and neither too hot nor too cold between 5°C (41°F) and 35°C (95°F).
- Do not install the System in a place subject to vibrations.
- Do not put heavy objects on the System.

To prevent malfunction or damage of the System

- Do not insert any metallic objects, such as wires, hairpins, coins, etc. into the System.
- Do not block the vents.

There are no user-serviceable parts inside.
If anything goes wrong, unplug the power cord and consult your dealer.

Getting Started

Supplied Accessories

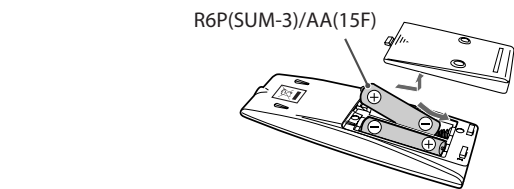
After unpacking, check to be sure that you have all the following items. The number in parentheses indicates the quantity of each piece supplied.

- Remote control (x 1)
- Batteries (x 2)
- FM antenna (x 1)
- AM loop antenna (x 1)

If anything is missing, consult your dealer immediately.

Prepare the Remote Control

- Insert the battery into the remote control by matching the polarity (+ and -) correctly.
- If the range or effectiveness of the remote control decreases, replace both batteries.



CAUTION:
• Danger of explosion if battery is incorrectly replaced. Replace only with the same or equivalent type.
• Battery shall not be exposed to excessive heat such as sunshine, fire or the like.



Le symbole de l'éclair à l'intérieur d'un triangle équilatéral est destiné à alerter l'utilisateur sur la présence d'une "tension dangereuse" non isolée dans le boîtier du produit. Cette tension est suffisante pour provoquer l'électrocution de personnes. Le point d'exclamation à l'intérieur d'un triangle équilatéral est destiné à alerter l'utilisateur sur la présence d'opérations d'entretien importantes au sujet desquelles des renseignements se trouvent dans le manuel d'instructions.



Note to CATV system installer:

This reminder is provided to call the CATV system installer's attention to Section 820-40 of the NEC which provides guidelines for proper grounding and, in particular, specifies that the cable ground shall be connected to the grounding system of the building, as close to the point of cable entry as practical.

For U.S.A.

This equipment has been tested and found to comply with the limits for a Class B digital device, pursuant to part 15 of the FCC Rules.

These limits are designed to provide reasonable protection against harmful interference in a residential installation. This equipment generates, uses and can radiate radio frequency energy and, if not installed and used in accordance with the instructions, may cause harmful interference to radio communications. However, there is no guarantee that interference will not occur in a particular installation. If this equipment does cause harmful interference to radio or television reception, which can be determined by turning the equipment off and on, the user is encouraged to try to correct the interference by one or more of the following measures:

Reorient or relocate the receiving antenna.
Increase the separation between the equipment and receiver. Connect the equipment into an outlet on a circuit different from that to which the receiver is connected. Consult the dealer or an experienced radio/TV technician for help.

For Canada/pour le Canada

THIS DIGITAL APPARATUS DOES NOT EXCEED THE CLASS B LIMITS FOR RADIO NOISE EMISSIONS FROM DIGITAL APPARATUS AS SET OUT IN THE INTERFERENCE-CAUSING EQUIPMENT STANDARD ENTITLED "DIGITAL APPARATUS," ICES-003 OF THE DEPARTMENT OF COMMUNICATIONS.

CET APPAREIL NUMÉRIQUE RESPECTE LES LIMITES DE BRUITS RADIOÉLECTRIQUES APPLICABLES AUX APPAREILS NUMÉRIQUES DE CLASSE B PRÉSCRITES DANS LA NORME SUR LE MATÉRIEL BROUILLEUR; APPAREILS NUMÉRIQUES; NMB-003 ÉDICTÉE PAR LE MINISTRE DES COMMUNICATIONS.

IMPORTANT FOR LASER PRODUCTS

- CLASS 1 LASER PRODUCT
- CAUTION:** Do not open the top cover or cabinet. There are no user serviceable parts inside the unit; leave all servicing to qualified service personnel.
- CAUTION:** Visible and/or invisible class 1M laser radiation when open. Do not view directly with optical instruments.
- REPRODUCTION OF LABEL: CAUTION LABEL, PLACED INSIDE THE UNIT.

IMPORTANT POUR PRODUITS LASER

- PRODUIT LASER CLASSE 1
- ATTENTION:** N'ouvrez pas le couvercle supérieur ni le coffret de l'appareil. Il n'y a aucune pièce réparabile par l'utilisateur à l'intérieur de l'appareil; confiez toute réparation à un personnel qualifié.
- ATTENTION:** Rayonnement laser visible et/ou invisible de classe 1M une fois ouvert. Ne pas regarder directement avec des instruments optiques.
- REPRODUCTION DE L'ÉTIQUETTE: ÉTIQUETTE DE PRÉCAUTION PLACÉE À L'INTÉRIEUR DE L'APPAREIL.



CAUTION

Changes or modifications not approved by JVC could void the user's authority to operate the equipment.

CAUTION:

Excessive sound pressure from earphones or headphones can cause hearing loss.

ATTENTION:

Une pression acoustique excessive des écouteurs ou du casque d'écoute peut entraîner une perte auditive.

Caution — ϕ /I (STANDBY/ON) button!

Disconnect the mains plug to shut the power off completely (the STANDBY lamp goes off). When installing the apparatus, ensure that the plug is easily accessible. The ϕ /I (STANDBY/ON) button in any position does not disconnect the mains line.

- When the system is on standby, the STANDBY lamp lights red.
- When the system is turned on, the STANDBY lamp goes off.

The power can be remote controlled.

ATTENTION — Touche ϕ /I (STANDBY/ON)!

Déconnectez la fiche secteur pour mettre l'appareil complètement hors tension (le témoin STANDBY s'éteint). Lors de l'installation de l'appareil, assurez-vous que la fiche soit facilement accessible. La touche ϕ /I (STANDBY/ON), dans n'importe quelle position, ne déconnecte pas l'appareil du secteur.

- Quand l'appareil est en mode d'attente, le témoin STANDBY est allumé en rouge.
- Quand l'appareil est sous tension, le témoin STANDBY s'éteint. L'alimentation peut être commandée à distance.

CAUTION

To reduce the risk of electrical shocks, fire, etc.:

- Do not remove screws, covers or cabinet.
- Do not expose this appliance to rain or moisture.

ATTENTION

Afin d'éviter tout risque d'électrocution, d'incendie, etc.:

- Ne pas enlever les vis ni les panneaux et ne pas ouvrir le coffret de l'appareil.
- Ne pas exposer l'appareil à la pluie ni à l'humidité.

CAUTION:

- Do not block the ventilation openings or holes. (If the ventilation openings or holes are blocked by a newspaper or cloth, etc., the heat may not be able to get out.)
- Do not place any naked flame sources, such as lighted candles, on the apparatus.
- When discarding batteries, environmental problems must be considered and local rules or laws governing the disposal of these batteries must be followed strictly.
- Do not expose this apparatus to rain, moisture, dripping or splashing and that no objects filled with liquids, such as vases, shall be placed on the apparatus.

ATTENTION:

- Ne bloquez pas les orifices ou les trous de ventilation. (Si les orifices ou les trous de ventilation sont bloqués par un journal un tissu, etc., la chaleur peut ne pas être évacuée correctement de l'appareil.)
- Ne placez aucune source de flamme nue, telle qu'une bougie, sur l'appareil.
- Lors de la mise au rebut des piles, veuillez prendre en considération les problèmes de l'environnement et suivre strictement les règles et, les lois locales sur la mise au rebut des piles.
- N'exposez pas cet appareil à la pluie, à l'humidité, à un égouttement ou à des éclaboussures et ne placez pas des objets remplis de liquide, tels qu'un vase, sur l'appareil.

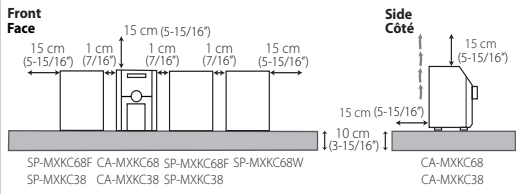
CAUTION: Proper Ventilation

To avoid risk of electric shock and fire, and to prevent damage, locate the apparatus as follows:
1. Front: No obstructions and open spacing.
2. Sides/Top/Back: No obstructions should be placed in the areas shown by the dimensions below.
3. Bottom: Place on the level surface. Maintain an adequate air path for ventilation by placing on a stand with a height of 10 cm (3-15/16") or more.

Attention: Aération correcte

Pour prévenir tout risque de décharge électrique ou d'incendie et éviter toute détérioration, installez l'appareil de la manière suivante:

- Avant: Bien dégagé de tout objet.
- Côtés/dessus/dessous: Assurez-vous que rien ne bloque les espaces indiqués sur le schéma ci-dessous.
- Dessous: Posez l'appareil sur une surface plane et horizontale. Veillez à ce que sa ventilation correcte puisse se faire en le plaçant sur un support d'au moins dix centimètres de hauteur.



WARNING: TO REDUCE THE RISK OF FIRE OR ELECTRIC SHOCK, DO NOT EXPOSE THIS APPLIANCE TO RAIN OR MOISTURE.



Basic and Common Operations

Basic Operations

To	On the System	On the remote	Press
Turn on or off (standby) the power			The STANDBY lamp on the System turns off/on.
Select a source			See "Playing Back a Disc" on page 4.
			See "Listening to iPod" on page 6.
			Press repeatedly to select "FM," "AM," or "AUDIO IN".
			• For "FM" and "AM," see "Listening to FM and AM Broadcasts" on page 5.
			• For "AUDIO IN," see "Listening to Digital Audio Player" on page 6.
Adjust the volume			You can adjust the volume level from level 0 ("VOLUME MIN") to level 31 ("VOLUME MAX").
Drop the volume in a moment	—		To restore the volume, press again, or adjust the volume level.

Display Settings

To	On the System	On the remote	Press
Set the Save mode		—	Press when the System is on standby. • Setting the Save mode allows you to reduce power consumption by turning the display off while on standby. To cancel this function, press again.
Changing the display brightness	—		Press repeatedly to select a brightness level. DIMMER 1 → DIMMER 2 DIMMER OFF ←
Changing the display information (Clock and source)	—		Press briefly. For setting the clock, see "Setting the Clock and Using Timers" on page 5.

NOTE

DO NOT turn off (standby) the System with the volume set to an extremely high level; otherwise, the sudden blast of sound can damage your hearing, speakers and/or headphones when you turn on the System or start playback.

How to cancel the demonstration
Press and hold CANCEL/ DEMO button while on standby. (Refer to the attached sheet "Information about the demonstration function".)

Using Headphones

Be sure to turn down the volume before connecting or putting on the headphones.

- Connecting the headphones will deactivate the speakers.
- Sound adjustments also affect the sound through the headphones.

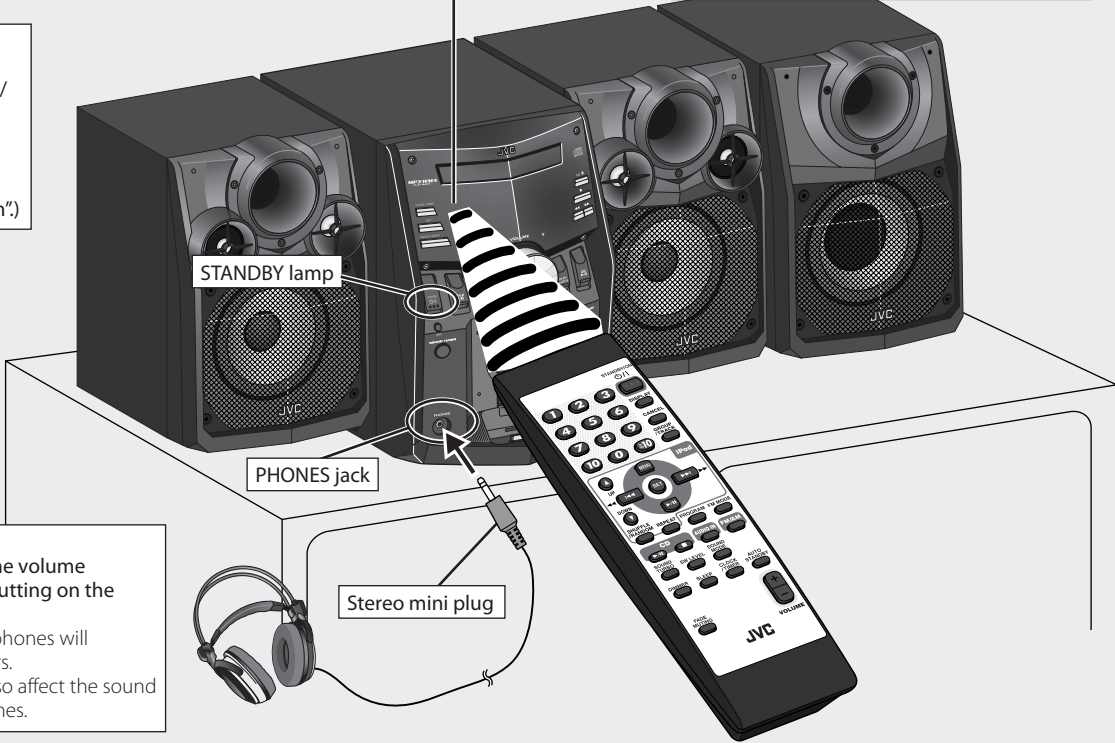
Sound Adjustment

To	On the System	On the remote	Press
Reinforce the heavy sound			• Sound Turbo indicator lights up. To cancel this function, press again.
Select a sound mode			Press repeatedly to select a sound mode you want. DANCE → HALL → STADIUM ↑ (Off) ← CLASSIC → POP → ROCK
Change the subwoofer level (only for MX-KC68)	—		Press repeatedly to select a subwoofer level. WOOFER 1 : SUBWOOFER1 WOOFER 2 : SUBWOOFER2 WOOFER 3 : SUBWOOFER3

3

iPod is a trademark of Apple Inc., registered in the U.S. and other countries.

Point at the remote sensor on the front panel. (The operating range is approx. 7 m (23 ft).)



Display Information

Main display	File type indicators (See page 4.)	Play mode indicators (See page 4.)	FM reception indicators (See page 5.)
Timer mode indicators (See page 5.)	Sound Turbo indicator (See the left table.)		
	Subwoofer level indicator (See the left table.)		
	Sound mode indicator (See the left table.)		

Playing Back a Disc

This System can play back...

- CD.
- CD-R/CD-RW recorded in audio CD format (CD-DA) or recorded MP3/WMA files in ISO 9660 format.
- When playing back an MP3 or WMA track, MP3 or WMA indicator lights on the display.

Loading a Disc

1	On the System only	Press to open the disc tray.
2		• When using an 8 cm (3-3/16 inches) disc, place it on the inner circle of the disc tray.
3		Press to close the disc tray.

Basic Disc Operations

To	On the System	On the remote	Press
Play back the disc			• Current track number and elapsed playing time appear on the main display. For MP3/WMA files: Before current track number and elapsed playing time appear, the tag information is scrolled if it is recorded. • During playback, press again to pause.
Stop playback			• While playback is stopped, total track number and total playing time (for MP3/WMA files, group number and track number) appear on the main display.
Select a track			Press to select the next tracks.
Select a track number	—		• To select number 5, press 5 . • To select number 25, press ±10, 2 , then 5 .
Forward search/Reverse search			Press and hold to fast-forward the track during playback. Press and hold to fast-reverse the track during playback.

NOTE

- If no disc is inserted, "NO DISC" appears on the main display.

To Select a Group (for MP3/WMA only)

1	GROUP TRACK	Press briefly.	
2		Select a group number.	
3		Select a track number. • You can use also ◀◀ or ▶▶ buttons.	

RESUME Play (for MP3/WMA only)

When you stop the playback by one of the following operations, this System stores the beginning of the stopped track on the disc.

- Pressing **■** once
- Changing the source

When you start playback again, playback starts from the stored position.

To clear the stored position, turn off the System.

- Opening the disc tray also clears the stored position.

NOTE

This function does not work in program play and random play.

Programming the Playing Order—Program Play

1	PROGRAM	Press before you start playback. • The PROG (program) indicator lights on the display.
2		• For MP3/WMA files: select a group number, then a track number. • For CD: select a track number.
3	Repeat step 2 to program other tracks you want.	• If you try to program a 51st track, "FULL" will appear on the main display.
4		The tracks are played back in the programmed order.

To Operate on the Program Play Mode

To	Press
Check the programmed contents	or Press while playback is stopped.
Add tracks	Repeat step 2 above while playback is stopped.
Erase the last track	• The track number and the program number of the new last track appear on the main display.
Erase the entire program	Press and hold for 2 seconds.
Exit from program play	Press while playback is stopped.

Playing at Random—Random Play

1		Press before you start playback. • The RND (random) indicator lights on the display.
2		Playback starts in random order. Random Play ends when all tracks are played back.

To Operate on the Random Play Mode

To	Press
Skip a track	or goes back to the beginning of the current track.
Exit from random play	Press once while playback is stopped.

Playing Repeatedly—Repeat Play

1		Press repeatedly to specify the repeat mode as follows: • REP 1 Repeats the current (or specified) track. • REP Repeats all tracks in the current group (MP3/WMA only). • REP ALL Repeats all tracks. • (Off) Normal playback
---	--	---

Turning off the System Automatically—AUTO STANDBY function

Press until the ASTBY indicator lights on the display.

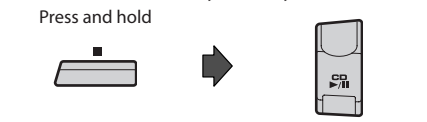
- The ASTBY indicator starts flashing on the display after playback stops. If no operation is done for about 3 minutes, the System turns off.
- The AUTO STANDBY function also works in the following cases:
 - "iPOD" is selected as the source and no iPod is connected to the System.
 - "AUDIO IN" is selected as the source and no equipment is connected to the AUDIO IN terminal.
- The AUTO STANDBY function does not work when "FM" or "AM" is selected as the source.

To cancel this function, press again.

Prohibiting Disc Ejection

You can lock the disc tray so that no one can eject the loaded disc.

- This is possible while the System is on standby and the disc tray is closed.



To cancel the prohibition, repeat the same procedure.

Listening to FM and AM Broadcasts

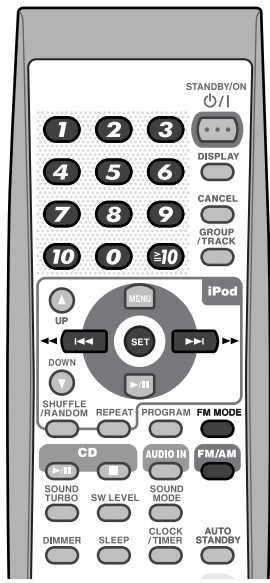
Basic Tuner Operations

To	On the System	On the remote	Press
Select FM or AM			Press repeatedly to select "FM" or "AM." • The selected frequency appears on the main display.
Select a frequency	or		Press and hold for more than 2 seconds. The System starts searching for stations and stops when a station of sufficient signal strength is tuned in. • If an FM program is broadcast in stereo, the ST (stereo) indicator lights on the display (only when the reception is good). • Press during searching to stop. • Press repeatedly to change the frequency step by step.
Tune in to a preset station	—		Press to select a preset number for the station you store. • For presetting stations, see below.
Change the FM reception mode (When an FM stereo broadcast is hard to receive or noisy)	—		Press to improve reception. The MONO indicator lights on the display. Reception will improve though the stereo effect is lost. To restore the stereo effect, press again.
Reduce AM beating noises (When you hear beating noises while listening to an AM station)	—		Press repeatedly to select BEAT CUT ON.

Presetting Stations

You can preset 30 FM and 15 AM stations manually.

- Tune in to a station you want to preset.**
 - You can also store the monaural reception mode for FM preset stations if selected.
- Press to activate the preset number entry mode.
 - Finish the following steps while the indication on the display is flashing.
- Press to select a preset number for the station you store.
 - To select number 5, press **5**.
 - To select number 25, press **±10, 2**, then **5**.
- Press to store the station.



Setting the Clock and Using Timers

Setting the Clock

You cannot use Daily Timer until you set the clock.
• "AM 12:00" flashes on the main display until you set the clock.

- Press to activate the clock setting mode.
 - If you have already adjusted the clock before, press the button repeatedly until the clock setting mode is selected.
- or → Adjust the hour, then the minute.

- To exit from the clock setting, press CLOCK/TIMER as required.
- To go back to the previous step, press CANCEL.
- You can also use the buttons on the System as well.

Setting the Sleep Timer

- Press repeatedly to specify the time (in minutes) as follows:
- 10 → 20 → 30 → 60 → 90 → 120 → 150 → 180**
- Canceled**
- While the Sleep Timer is working, the SLEEP indicator lights on the display.
 - To check the remaining time to turn off after setting the sleep timer, press once.

Setting the Daily Timer

Using Daily Timer, you can wake up with your favorite music.

- Press repeatedly to select "ON".

→ **ON (Time)**
Canceled ← Clock setting mode (See above.)
- or →
 - Adjust the hour then the minute for on-time.
 - Adjust the hour then the minute for off-time.
 - Select the playback source—"DISC","IPOD","AUDIO IN","TUNER FM," or "TUNER AM."
 - For FM, AM: Select a preset channel.
 - For "DISC": Select a track. (For MP3/WMA: select a group, then a track number.)
 - For "AUDIO IN": Make the connected device ready for playback.
 - Select the volume level.
 - You can select the volume level ("VOLUME 0" to "VOLUME 31" and "VOLUME --"). If you select "VOLUME --", the volume is set to the last level when the System is turned off.
- Turn off the System (on standby).
 - When the on-time of the daily timer comes, the System sets the volume level gradually to the preset level after about 10 seconds.

* When "IPOD" is selected as the playback source, charge the iPod battery through the iPod terminal (see page 6); otherwise, Daily Timer may not work.

- To exit from the timer setting, press CLOCK/TIMER as required.
- To correct a misentry during the process, press CANCEL.
- You can return to the previous step.
- You can also use the buttons on the System as well.

To Turn Off the Daily Timer

- Press repeatedly to select "DAILYTIMER."
-

To turn on the Daily Timer again, select "DAILYTIMER" by pressing CLOCK/TIMER, then press SET.



Learning More about This System

Basic and Common Operations (see page 3)

- Pressing one of the source buttons also turns on the System and starts playing back.

Playing Back a Disc (see page 4)

- This System cannot play "packet write" discs.
- For MP3/WMA playback.
 - In this manual, "file" and "track" are interchangeably used for MP3/WMA operations.
 - This System can show the Tag data (Version 1).
 - MP3/WMA discs are required a longer readout time than regular CDs. (It depends on the complexity of the group/file configuration.)
 - Some MP3/WMA files cannot be played back and will be skipped. This result from their recording processes and conditions.
 - When making MP3/WMA discs, use ISO 9660 Level 1 or Level 2 for the disc format.
 - This System can play back MP3/WMA files with the extension code <mp3> or <.wma> (regardless of the letter case—upper/lower).
 - It is recommended that you make each MP3/WMA file at a sampling rate of 44.1 kHz and at bit rate of 128 kbps. This System cannot play back files made at bit rate of less than 64 kbps.
 - Playback order of MP3/WMA tracks may be different from the one you have intended while recording. If a folder does not include MP3/WMA tracks, they are ignored.
- This System can recognize up to 99 groups in a disc. The total number of groups and tracks in a disc that can be recognized by the System is 512 (for MP3/WMA).
 - Playable files which do not belong to any groups are handled as Group 1.

Setting the Clock and Using Timers (see page 5)

- You can set the clock and Daily Timer even while the Save mode is turned on. While setting the clock or Daily Timer, the display is turning on.
- The clock may gain or lose 1 to 2 minutes per month. If this happens, readjust the clock.
- When you unplug the AC power cord or if a power failure occurs, the clock and the timer will be canceled. You need to set the clock first, then the timer again.

Timer Priority:

- If you set the Sleep Timer after Daily Timer starts playing the selected source, Daily Timer is canceled.

Listening to iPod (see page 6)

- If the iPod does not play correctly, update your iPod Software to the latest version. For details about updating your iPod, check on the Apple web site <<http://www.apple.com>>.
- The iPod battery cannot be charged while the System is in the Save mode.
- When the iPod is not charged through the System, the iPod may not be turned on from the System.
- You cannot send any data to your iPod from the System.
- Sound distortion may occur when playing back audio sources with high recording levels. When distortion occurs, it is recommended to turn off the equalizer of the iPod. For information on operating the iPod, see the iPod instruction manual.
- Do not touch or hit the iPod terminal pins or connector pins directly. It might cause damages to the connector part.

JVC bears no responsibility for any loss of data in iPod while using this System.

Microsoft and Windows Media are either registered trademarks or trademarks of Microsoft Corporation in the United States and/or other countries.

Troubleshooting

If you are having a problem with your System, check this list for a possible solution before calling for service.

General

Power does not come on.

- Power plug is not inserted securely. Plug in securely.

Demonstration starts automatically.

- The demonstration function is activated.
Press and hold the CANCEL/DEMO button on the main unit while on standby until "DEMO CLEAR" appears on the display. (Refer to the attached sheet "Information about the demonstration function".)

Adjustments or settings are suddenly canceled before you finish.

- There is a time limit. Repeat the procedure again.

Operations are disabled.

- The built-in microprocessor may malfunction due to external electrical interference. Unplug the AC power cord and then plug it back in.
- Unable to operate the System from the remote control.
 - The path between the remote control and the remote sensor on the System is blocked.
 - The batteries are exhausted.

No sound is heard.

- Speaker connections are incorrect or loose.
- Headphones are connected.

The System does not work properly.

- Many functions of this System are implemented by microcomputers. If pressing any button does not result in the normal action, disconnect the AC power cord from the wall outlet, wait for a while, and connect the cord again.

Disc Operations

The disc does not play.

- The disc is placed upside down. Place the disc with the label side up.
- The disc is recorded with the "packet writing (UDF file system)". It cannot be played. Check the files you want to play back.

MP3/WMA groups and tracks are not played back as you expect.

- The playing order is determined when the groups and tracks were recorded. It depends on the writing application.

The disc sound is discontinuous.

- The disc is scratched or dirty.

The disc tray does not open or close.

- The AC power cord is not plugged in.
- Disc ejection is prohibited (see page 4).

Radio Operations

Hard to listen to broadcasts because of noise.

- Antenna connections are incorrect or loose.
- The AM loop antenna is too close to the System.
- The FM antenna is not properly extended and positioned.
- Electrostatic discharge from your body may cause noise. If this happens, turn off and on the System again.

Timer Operations

Daily Timer does not work.

- The System has been turned on when the on-time comes. Timer starts working only when the System is turned off.
- When "IPOD" is selected as the playback source, charge the battery of the iPod through the iPod terminal; otherwise, Daily Timer may not work.

iPod Operations

iPod is not turned on.

- The iPod is not connected properly.
- iPod does not play though "CONNECT" appears on the main display.
- The battery of the iPod is empty. Leave the iPod connected for more than ten minutes.

iPod is not played back from the System.

- The iPod battery charge function is deactivated.
- The iPod is not compatible with the System. Check the compatibility on the list on page 6.

iPod is not charged.

- The System is in the Save mode (see page 3.)
- The iPod battery charge function is deactivated (see page 6).

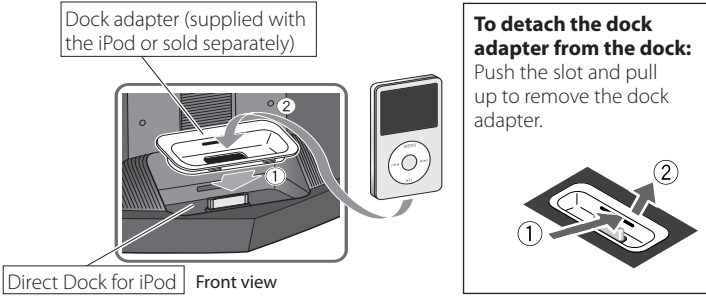
Listening to iPod

Listening to iPod

Compatible iPod types:

- iPod nano 1GB/2GB/4GB
- iPod nano (2nd Generation) 2GB/4GB/8GB
- iPod nano (3rd Generation) 4GB/8GB
- iPod mini 4GB/6GB
- iPod (4th Generation) 20GB/40GB
- iPod photo (4th Generation) 20GB/30GB/40GB/60GB
- iPod video (5th Generation) 30GB/60GB/80GB
- iPod classic 80GB/160GB
- iPod touch 8GB/16GB

Connecting the iPod:



- Set the volume to minimum.

or
- The iPod is turned on and the last track you had selected is played back.
 - If the track is not played back automatically, press again.
- Adjust the volume to the level you want to listen to.

NOTES

- When "IPOD" is selected as the source...
 - "CONNECT" appears on the main display while an iPod is connected.
 - "NO CONNECT" appears on the main display while no iPod is connected.
- The iPod battery is charged through the iPod terminal in the following cases:
 - When the System is turned on.
 - When the System is turned off and is not in the Save mode.

Disconnecting the iPod:
When disconnecting the iPod, make sure this System is turned off.

If an iPod which is not on the compatible iPod types list above is connected, it may not be operated from the System. In this case, deactivate the iPod battery charge function so that the iPod may be operated, but it cannot be charged through the System.

- To deactivate the battery charge function, change the source to "IPOD," then press and hold on the System while no iPod is connected.
 - "CHARGE OFF" appears on the main display.

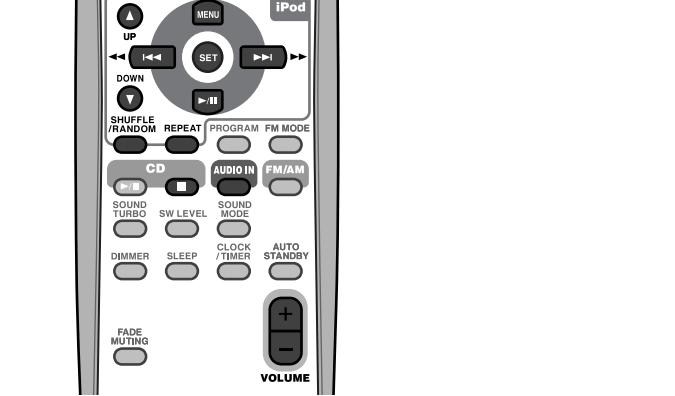
To use the battery charge function, change the source to "IPOD," then press and hold on the System until "CHARGE ON" appears on the main display.

Listening to Digital Audio Player

Listening to Digital Audio Player

- To audio output (or headphone out, etc.)
- or Set the volume to minimum.
- When operating on the main unit, press FM/AM/AUDIO IN repeatedly to select "AUDIO IN".
- Start playing the connected Digital Audio Player.
- Adjust the volume level to the level you want to listen to.

- or Set the volume to minimum.
- When operating on the main unit, press FM/AM/AUDIO IN repeatedly to select "AUDIO IN".
- Start playing the connected Digital Audio Player.
- Adjust the volume level to the level you want to listen to.



Specifications

Amplifier section

OUTPUT POWER:

Main speakers
110 W per channel, min. RMS, driven into 3 Ω at 1 kHz with no more than 10% total harmonic distortion
Speakers/Impedance: 3 Ω – 6 Ω

Subwoofer (for MX-KC68)
180 W per channel, min. RMS, driven into 8 Ω at 63 Hz with no more than 10% total harmonic distortion
Speakers/Impedance: 8 Ω – 16 Ω

Tuner section

FM tuning range: 87.5 MHz – 108.0 MHz
AM tuning range: 530 kHz – 1 710 kHz

CD player section

Dynamic range: 90 dB
Signal-to-noise ratio: 88 dB
Wow and flutter: Immeasurable

Speakers

Main speakers (SP-MXKC68F/SP-MXKC38)

Type: 3-Way 3-Speaker Bass-Reflex Type

Speaker units

Main Woofer: 16 cm (6-5/16 inches) cone x 1
Mid Range: 5 cm (2 inches) cone x 1
Tweeter: 2 cm (13/16 inches) dome x 1

Power Handling Capacity: 110 W

Impedance: 3 Ω

Frequency Range: 41 Hz - 35 kHz

Sound Pressure Level: 83 dB/W·m

Dimensions (approx.): 210 mm x 315 mm x 220 mm (W/H/D)
(8-5/16 inches x 12-7/16 inches x 8-11/16 inches)

Mass (approx.): 3.0 kg (6.7 lbs) each

Subwoofer (SP-MXKC68W)

Type: 1-Way Bass-Reflex Type

Speaker: 16 cm (6-5/16 inches) cone x 1

Power Handling Capacity: 180 W

Impedance: 8 Ω

Frequency Range: 38 Hz - 5 kHz

Sound Pressure Level: 83 dB/W·m

Dimensions (approx.): 210 mm x 315 mm x 242 mm (W/H/D)
(8-5/16 inches x 12-7/16 inches x 9-9/16 inches)

Mass (approx.): 3.4 kg (7.5 lbs)

General

Power requirements: AC 120 V ~, 60 Hz

Audio input AUDIO IN: 400 mV/47 kΩ

Power supply to iPod: DC 5 V ≐ 500 mA

Power consumption: 95 W (MX-KC68) - power on

60 W (MX-KC38) - power on

9 W - standby mode, without charging iPod

0.9 W or less - save mode

Dimensions (W x H x D): 215 mm x 307 mm x 309 mm

(8-1/2 inches x 12-1/8 inches x 12-3/16 inches)

Mass (approx.): 3.8 kg (8.4 lbs) (MX-KC68)

3.6 kg (8.0 lbs) (MX-KC38)

Specifications and appearance are subject to change without prior notice.

Maintenance

To get the best performance of the System, keep your discs and mechanism clean.

Handling discs

- Remove the disc from its case by holding it at the edge while pressing the center hole lightly.
- Do not touch the shiny surface of the disc, or bend the disc.
- Put the disc back in its case after use.
- Be careful not to scratch the surface of the disc when placing it back in its case.
- Avoid exposure to direct sunlight, temperature extremes, and moisture.

To clean the disc:

- Wipe the disc with a soft cloth in a straight line from center to edge.

Cleaning the System

- Stains should be wiped off with a soft cloth. If the System is heavily stained, wipe it with a cloth soaked in water-diluted neutral detergent and wrung well, then wipe clean with a dry cloth.

- Since the System may deteriorate in quality, become damaged or get its paint peeled off, be careful about the following:
 - DO NOT wipe it strong.
 - DO NOT wipe it with thinner or benzine.
 - DO NOT apply any volatile substance such as insecticides to it.
 - DO NOT allow any rubber or plastic to remain in contact for a long time.

TO OUR VALUED CUSTOMER

THANK YOU FOR PURCHASING THIS JVC PRODUCT.
WE WANT TO HELP YOU ACHIEVE A PERFECT EXPERIENCE.

**NEED HELP ON HOW TO HOOK UP?
NEED ASSISTANCE ON HOW TO OPERATE?
NEED TO LOCATE A JVC SERVICE CENTER?
LIKE TO PURCHASE ACCESSORIES?**

JVC IS HERE TO HELP!
TOLL FREE: 1(800)252-5722
<http://www.jvc.com>

Remember to retain your Bill of Sale for Warranty Service.

Do not attempt to service the product yourself

Caution
To prevent electrical shock, do not open the cabinet.
There are no user serviceable parts inside.
Please refer to qualified service personnel for repairs.

BT-51018-5
(0306)

JVC

LIMITED WARRANTY

ONLY FOR PRODUCT PURCHASED IN U.S.A.

1-1

USA ONLY

JVC Americas Corp. (JVC) warrants this product and all parts thereof, except as set forth below ONLY TO THE ORIGINAL RETAIL PURCHASER to be FREE FROM DEFECTIVE MATERIALS AND WORKMANSHIP from the date of original purchase for the period shown below. ("The Warranty Period")

PARTS	1 YR	LABOR	1 YR
-------	------	-------	------

THIS LIMITED WARRANTY IS VALID ONLY IN THE FIFTY (50) UNITED STATES, THE DISTRICT OF COLUMBIA AND IN THE COMMONWEALTH OF PUERTO RICO.

WHAT WE WILL DO:

If this product is found to be defective within the warranty period, JVC will repair or replace defective parts with new or rebuilt equivalents at no charge to the original owner. Such repair and replacement services shall be rendered by JVC during normal business hours at JVC authorized service centers. Parts used for replacement are warranted only for the remainder of the Warranty Period. All products may be brought to a JVC authorized service center on a carry-in basis. Color televisions with a screen size of 27" or greater qualify for in-home service. In such cases, a technician will come to your home and either repair the TV there or remove and return it if it cannot be repaired in your home.

WHAT YOU MUST DO FOR WARRANTY SERVICE:

Please do not return your product to the retailer. Instead, return your product to the JVC authorized service center nearest you. If shipping the product to the service center, please be sure to package it carefully, preferably in the original packaging, and include a brief description of the problem(s). Please call 1-800-252-5722 to locate the nearest JVC authorized service center. Service locations can also be obtained from our website <http://www.jvc.com>. If your product qualifies for in-home service, the service representative will require clear access to the product.

If you have any questions concerning your JVC Product, please contact our Customer Care Center at 800-252-5722

WHAT IS NOT COVERED:

This limited warranty provided by JVC does not cover:

- Products which have been subject to abuse, accident, alteration, modification, tampering, negligence, misuse, faulty installation, lack of reasonable care, or if repaired or serviced by anyone other than a service facility authorized by JVC to render such service, or if affixed to any attachment not provided with the products, or if the model or serial number has been altered, tampered with, defaced or removed.
- Initial installation, installation and removal from cabinets or mounting systems.
- Operational adjustments covered in the Owner's Manual, normal maintenance, video and audio head cleaning;
- Damage that occurs in shipment, due to act of God, and cosmetic damage;
- Signal reception problems and failures due to line power surge;
- User Removal Memory Devices/Video Pick-up Tubes/CCD Image Sensors are covered for 90 days from the date of purchase;
- Accessories;
- Batteries (except that Rechargeable Batteries are covered for 90 days from the date of purchase);
- Products used for commercial purposes, including, but not limited to rental.
- Loss of data resultant from malfunction of hard drive or other data storage device;

There are no express warranties except as listed above.

THE DURATION OF ANY IMPLIED WARRANTIES, INCLUDING THE IMPLIED WARRANTY OF MERCHANTABILITY, IS LIMITED TO THE DURATION OF THE EXPRESS WARRANTY HEREIN.

JVC SHALL NOT BE LIABLE FOR ANY LOSS OF USE OF THE PRODUCT, INCONVENIENCE, OR ANY OTHER DAMAGES, WHETHER DIRECT, INCIDENTAL OR CONSEQUENTIAL (INCLUDING, WITHOUT LIMITATION, DAMAGE TO TAPES, RECORDS OR DISCS) RESULTING FROM THE USE OF THIS PRODUCT, OR ARISING OUT OF ANY BREACH OF THIS WARRANTY. ALL EXPRESS AND IMPLIED WARRANTIES, INCLUDING THE WARRANTIES OF MERCHANTABILITY AND FITNESS FOR PARTICULAR PURPOSE, ARE LIMITED TO THE WARRANTY PERIOD SET FORTH ABOVE.

Some states do not allow the exclusion of incidental or consequential damages or limitations on how long an implied warranty lasts, so these limitations or exclusions may not apply to you. This warranty gives you specific legal rights and you may also have other rights which vary from state to state.

JVC AMERICAS CORP.
1700 Valley Road, Wayne, New Jersey 07470
<http://www.jvc.com>

REFURBISHED PRODUCTS CARRY A SEPARATE WARRANTY. THIS WARRANTY DOES NOT APPLY. FOR DETAIL OF REFURBISHED PRODUCT WARRANTY, PLEASE REFER TO THE REFURBISHED PRODUCT WARRANTY INFORMATION PACKAGED WITH EACH REFURBISHED PRODUCT.

For customer use:

Enter below the Model No. and Serial No. which is located either on the rear, bottom or side of the cabinet. Retain this information for future reference.

Model No. :

Serial No. :

Purchase date :

Name of dealer :

8

6