

JVC D-ILA Projector Firmware Update Procedure

This document describes the procedure to update the firmware for JVC D-ILA Projectors:

- DLA-RS10
- DLA-RS20
- DLA-HD350
- DLA-HD750

Notes:

- *It is important that the correct firmware update file be used for the appropriate projector. Use of incorrect firmware file could render the projector inoperative.*
- *Customized settings on the projector would be erased during firmware update. Note down the customized settings and re-enter after firmware update is completed.*
- *End-user agrees to use this firmware at his own risk. End-user bears the total responsibility for any failure arising from installing the firmware.*
- *Procedure shown in this document is for DLA-HD750 and DLA-RS20. Procedure for DLA-HD350 and DLA-RS10 is similar to that shown here.*

File Download:

Download the appropriate firmware update file for your projector model to your PC desktop. It is a self-extracting file and installs the ILA-FPJ Updater to the PC.

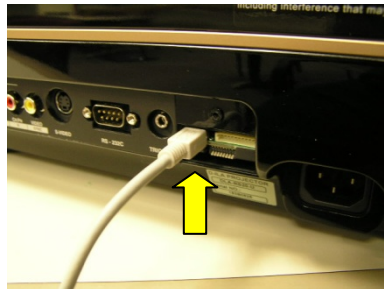
Tools Required:

- JVC Update Program Installer: ILA-FPJ Updater
- Standard PC running Windows XP or Windows Vista with USB Port
- USB to Mini-USB cable
- Philips screwdriver

USB Driver Installation:

JVC ILA-FPJ Updater program should have been installed on your PC at this point. Next step is to install the USB driver so that PC can communicate with the projector using USB connection. Administrator level access to the PC is required to proceed.

1. Press the STANDBY button twice to put the projector in STANDBY mode. Unplug the power cord from the projector.
2. Remove the screw and cover located to the left of the AC connector exposing the USB connector.



3. Plug the Mini USB end to the connector on the projector and the other end to the PC.
4. Press and hold the STANDBY button on the projector while plugging in the power cord. The three LEDs on the projector should be lit to indicate Download Mode.
5. PC detects the projector as new hardware. Then it opens Found New Hardware Wizard to help install the drivers.
6. In the Hardware Wizard screen, for the question "Can Windows connect to Windows Update to search for software?" click on "No, not this time", and then click "Next".



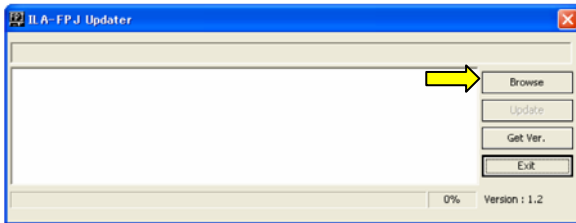
7. For the question “What do you want the wizard to do?”, click on “Install the software automatically (Recommended)”. Then click “Next”.



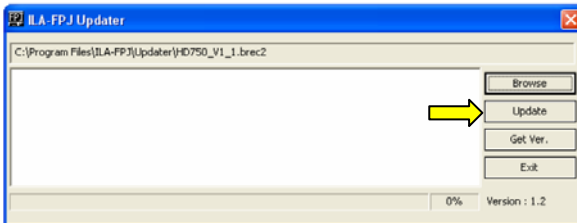
8. The driver will be installed and a confirmation message is displayed that the installation is finished.
9. If the driver does not install automatically, it can be installed manually. The USB Driver and .INF file can be found at \Program Files\ILA-FPJ\Updater\HD750_V1_1\.
10. When the driver is installed successfully, message “Found New Hardware. Your new hardware is installed and ready to use.”
11. Next step is to update the projector firmware. If you are going to update the firmware immediately after USB driver installation, leave the projector in Download Mode and proceed to step 3 of the Firmware Update procedure.

Firmware Update:

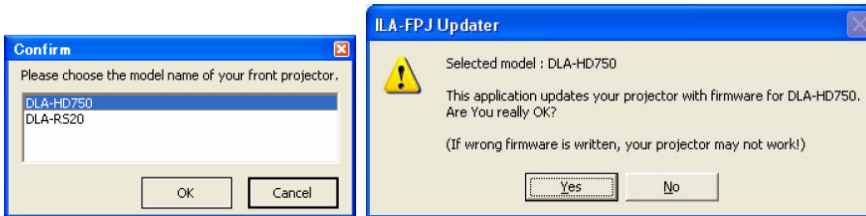
1. While in STANDBY mode, remove the power cord.
2. Press and hold the STANDBY button on the projector while plugging in the power cord. The three LEDs on the projector should be lit to indicate Download Mode.
3. Launch the ILA-FPJ Updater program from the START→ All Programs button.
4. Click on “Browse” button and navigate to locate the appropriate file. The update file has the projector model number, its version and the file extension .brec2. For example, HD750-V1_1.brec2 can be found at “\Program Files\ILA-FPJ\Updater\HD750_V1_1”. Select the appropriate update file and click “Open”.



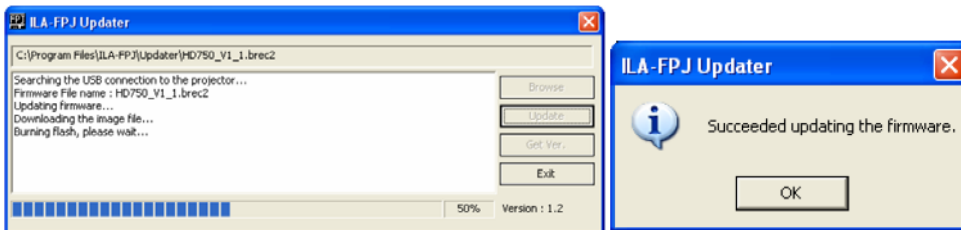
5. The path and filename will be shown at the top of the program. Click “Update” button.



6. Choose the appropriate projector model, and click “OK”. Next is a message to confirm the selected projector model to be updated.



7. Click “Yes” to start downloading the image file.
8. It takes approximately 2 minutes to update and progress bar shows the activity. When finished updating, click on “OK” button.



9. After a 5-second wait, press the STANDBY/On button on the projector. The 3 LEDs will flash slowly for approximately 40 seconds after which the projector goes into STANDBY MODE.

FIRMWARE VERSION CHECK

1. Leave the USB cable connected. Press the STANDBY button and wait for the blue-back picture to be displayed. Click on the “Get Ver.” button on the Updater Program. If update is successful, it should display “ver 1.1”.

After update is finished, switch off the projector. Remove the power cord. Unplug the USB cable and reinstall the cover with screw.