

# KD-R200

CD Receiver with Front AUX

Headunits



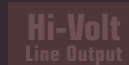
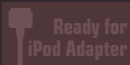
MP3/WMA

MOS-FET  
50W x 4

20W x 4  
RMS



## Recommended Features



## Key Benefits

Connect your digital audio player or other external devices through the Front AUX and listen to your favorite songs on board. The 50W x 4 MOS-FET power amp and 24-bit DAC offer an intensified sound performance. You can also adjust the settings with 3-band iEQ presets.



## MP3/WMA Playback

Compatible with compressed audio formats.



## Front AUX Input

Easy connection for digital audio players and other devices.

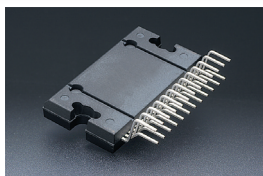


# KD-R200 *CD Receiver with Front AUX*

## MOS-FET Power Amp

Enables highly faithful sound reproduction with distortion-free pure signal preout.

# MOS-FET 50W x 4



## Oval Remote Control

The four-direction cursor key at the center makes it a breeze to navigate through folders and subfolders of MP3 files on a CD-R or CD-RW disc, and find and play the music you want. A separate single button lets you cycle through preset EQ options such as ROCK and JAZZ the remote is palm fitting and oval-shaped for ease of use.



## Detachable Face

With JVC headunits, you can easily remove the control panel and take it with you for security.



## 24-bit DAC

The 24-bit resolution 1-bit DAC provides higher resolution combined with lower distortion, thanks to the 24-bit requantization for CD playback

### Key Specifications

Maximum Power Output	50W x 4
Continuous Power Output (RMS)	20W RMS x 4 Channels at 4Ω ≤
* Total Harmonic Distortion	1.0% THD* + N
Line Preout Terminals (Pair)	1 pair (Rear/Subwoofer Selectable)
Subwoofer Output with Level/Frequency Control	✓ (Rear/Subwoofer Selectable)
Line Output Level	2.5V
Subwoofer Output Level	2.5V
Subwoofer Gain Control	0 - 16dB
Load Impedance	4Ω (4 - 8Ω allowable)
Line Output Impedance	1kΩ

### Dimensions (W x H x D)

Installation Size	7 3/16" x 2 1/16" x 6 5/16"	182 x 52 x 159.5 mm
Panel Size	7 7/16" x 2 5/16" x 1/4"	188 x 58 x 5.6 mm
Detachable Face Plate	6 3/4" x 1 13/16" x 3/4"	170 x 46 x 18.8 mm

### Connections

