

KD-A305

CD Receiver with Front AUX

Headunits



MP3/WMA

MOS-FET
50W x 4

20W x 4
RMS

SAT
RADIO
READY

HD Radio
READY

COMPACT
DISC
DIGITAL AUDIO
TEXT



Recommended Features



Key Benefits

The Front AUX provides easy connection with digital audio players and other external devices for playing your favorite songs on board. The unit offers smooth and easy operation using the menu key and the volume dial. The Variable-Color Illumination offers 30 preset color choices – or you can even customize your own color from over 30,000 variations. Enjoy superior sound delivered by 24-bit DAC and MOS-FET power amp. The 3-band parametric iEQ lets you fine tune the sound to your taste. You can also enjoy Bluetooth® Wireless Technology, iPod music, and HD Radio® with optional devices.



Variable-Color Illumination

Choose your perfect color with the Variable-Color Illumination, offering 30 preset colors + over 30,000 colors customizable by RGB combination. Operation can be easily done just by using the menu key and the volume dial.

RED (color 1)	APPLE (color 2)	DARK ORANGE (color 3)	ORANGE (color 4)	AMBER (color 5)	GOLD (color 6)
HONEY (color 7)	SAND (color 8)	IVORY (color 9)	MINT (color 10)	TURQUOISE (color 11)	PALE GREEN (color 12)
LIME (color 13)	GREEN (color 14)	GRASS (color 15)	LEAVES (color 16)	AQUA (color 17)	PALE BLUE (color 18)
POWDER BLUE (color 19)	SKY (color 20)	BLUE (color 21)	ROYAL BLUE (color 22)	SEA (color 23)	INDIGO (color 24)
LAVENDER (color 25)	GLACIER (color 26)	VIOLET (color 27)	PINK (color 28)	ROSE (color 29)	USER

30 Preset Colors! + Over 30,000 Customizable Colors

J-BUS Terminal

You can connect JVC's optional adapters or changers to this terminal. Available functions depend on the headunit.

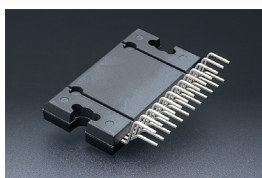


KD-A305 *CD Receiver with Front AUX*

MOS-FET Power Amp

Enables highly faithful sound reproduction with distortion-free pure signal preout.

MOS-FET 50W x 4



Front AUX Input

Easy connection for digital audio players and other devices.



SAT Radio Ready

Compatible with XM/Sirius Satellite Radio. (separate tuners required)



High Voltage Line Preout Terminals

The high voltage line preout provides high-quality signals for flexible settings.

5.0V Line Output

HD Radio® Ready

HD Radio® available with an optional KT-HD300 tuner.



KT-HD300



Ready for iPod Adapter (Ready for KS-PD100)

With an optional KS-PD100 adapter, you can connect and control your iPod on the headunit.



KS-PD100 (optional)

Ready for Bluetooth® Adapter

Bluetooth® Wireless Technology is available with an optional adapter (KS-BTA200)*, for hands-free calling and audio streaming.

* Not available in some countries. Available functions depend on the cell phone.



KS-BTA200 (optional)

Cell phone

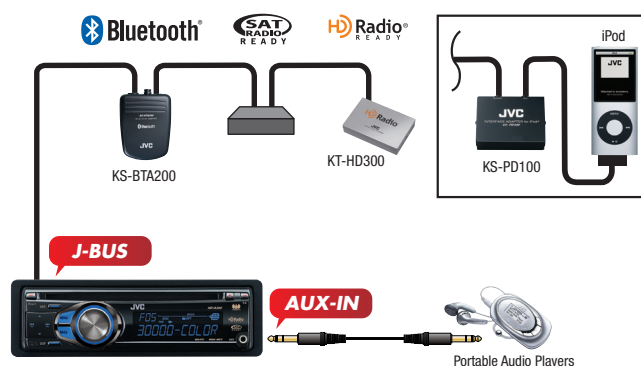
Key Specifications

Maximum Power Output	50W x 4
Continuous Power Output (RMS)	20W RMS x 4 Channels at 4Ω ≤
* Total Harmonic Distortion	1.0% THD* + N
Line Preout Terminals (Pair)	1 pair (Gold-Plated, Rear/Subwoofer Selectable)
Subwoofer Output with Level/Frequency Control	✓ (Gold-Plated, Rear/Subwoofer Selectable)
Line Output Level	5.0V
Subwoofer Output Level	5.0V
Subwoofer Gain Control	0 - 16dB
Load Impedance	4Ω (4 - 8Ω allowable)
Line Output Impedance	1kΩ

Dimensions (W x H x D)

Installation Size	7 3/16" x 2 1/16" x 6 5/16"	182 x 52 x 159.5 mm
Panel Size	7 7/16" x 2 5/16" x 1/4"	188 x 58 x 5.6 mm
Detachable Face Plate	6 3/4" x 1 13/16" x 3/4"	170 x 46 x 18.8 mm

Connections



Compatible iPod/iPhone Models

Requires KS-PD100	Requires KS-PD100	Requires KS-PD100	Requires KS-PD100	Requires KS-PD100	Requires KS-PD100	Requires KS-PD100	Requires KS-PD100	Requires KS-PD100	Requires KS-PD100
iPod 3rd generation 30GB 40GB	iPod mini 4GB 6GB	iPod 4th generation 40GB	iPod 4th generation (color display) 40GB 60GB	iPod nano 1st generation 1GB 2GB 4GB	iPod 5th generation (video) 60GB 80GB	iPod nano 2nd generation* (aluminum) 2GB 4GB 8GB	iPod classic 120GB	iPod nano 3rd generation (video) 4GB 8GB	iPod nano 4th generation** (video) 8GB 16GB

* With J-BUS connection, KS-PD100 may hang up while using iPod nano 2nd generation.

** iPod battery will not be charged via connection with KS-PD100.