

JVC[®]

The Perfect Experience / —

GZ-HM1
HD Memory Camera

Quality is Everything



HD Everio



HD Everio GZ-HM1 HD Memory Camera

Life is a story. One that deserves to be told with the highest quality.
From lens to final image, GZ-HM1 is technology-intensive for one reason only.
To let you relive your wonderful memories in all their brilliance.
The new HD Everio from JVC.
GZ-HM1 — the one, because quality is everything.

Full HD 1080/60P Output 64 GB MEMORY **SD** **AVCHD** **HDMI**

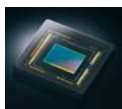
K2 TECHNOLOGY **Super LoLux** **YouTube** One Touch Upload **Compatible with iTunes**

Quality Brings Every Moment to Life



Super LoLux

GZ-HM1 provides superior results in low light environments by virtue of its 1/2.3" 10.62 Megapixel Back-illuminated CMOS sensor — a type CMOS that effectively avoids loss of incoming light because its circuitry is moved to a layer behind the photo diodes. This increased ability to gather visual information translates into a brighter, more detailed image.



Previous



GZ-HM1

Optical Image Stabilization System with Advanced Image Stabilizer*

GZ-HM1 offers double the assurance of camera shake compensation. First, its Optical Image Stabilizer (O.I.S.) uses prism technology to deliver effective results over the entire zoom range. Added to this, the Advanced Image Stabilizer system capitalizes on the large area of the CMOS to boost image stability in the wide-angle range, such as when you're moving with the subject.

*Especially effective when shooting bright scenes at wide angle.



Previous



GZ-HM1

High Resolution 1920x1080 Full HD Video

The camera's 10.62 Megapixel CMOS sensor is the source of 1920x1080 Full HD AVCHD format video. The camera records at a stunning 1080 TV lines of horizontal resolution — the theoretical maximum level of 1920x1080 Full HD.

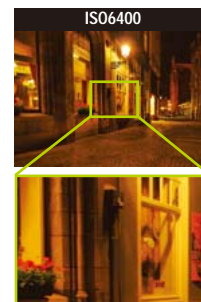


Real 10M Digital Stills with No Interpolation and High-Sensitivity ISO6400

The 10.62 Megapixel CMOS also allows GZ-HM1 to shoot real non-interpolated 10 Megapixel stills. And high-sensitivity ISO6400 enables shake-free crisp images even for low-lit situations. Enjoy shooting pristine digital stills with high resolution and sharp details, even if the lighting is less than ideal.



Real 10 Megapixel digital still



Sharp, detailed image even in dark situations

KONICA MINOLTA HD LENS

GZ-HM1 uses a new KONICA MINOLTA HD LENS with a 10x optical zoom, and magnifies up to 16x* without any picture degradation thanks to Dynamic Zoom technology.

*15x when Advanced Image Stabilizer set to ON.



Variety of Features for More Quality Improvement

● HD Gigabrid Premium II Engine

Enables high-speed processing of a huge amount of pixel data to allow high quality video recording.



● 24Mbps Ultra High Quality Recording

UXP mode records at 24Mbps, the highest bit rate possible for AVCHD video to deliver more detailed, sharper images with less noise.

● 1920x1080/60P Output

Outputs a 1080 scanning line image at progressive 60fps so you can enjoy uncompromising picture quality on a TV that accepts 1080P input.

1080/60P
Output

● K2 Technology for High Quality Audio

Restores the sound details lost during compression to enable high-quality audio playback that is closer to the original.



JVC

HD
AVCHD

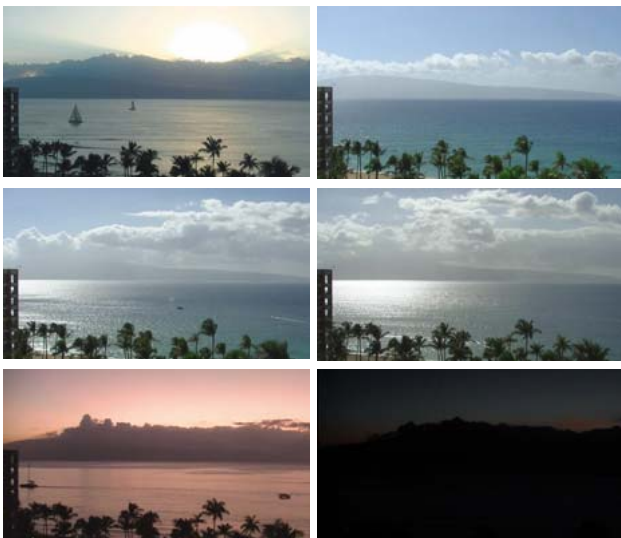
K2
TECHNOLOGY

Everio

Creative Techniques are Incredibly Easy

Time-Lapse REC

Various unique shooting functions are equipped on GZ-HM1. Time-Lapse REC records one frame at a time at set intervals (1sec.-80sec.). So you can watch an hour-long movement in just a short amount of time when played back. It's great when you want to observe an event that takes place over a long period of time, or to record unique-looking scenes in a creative way.



60fps / 5.7 Megapixel Motor Drive Shooting (up to 11 images)

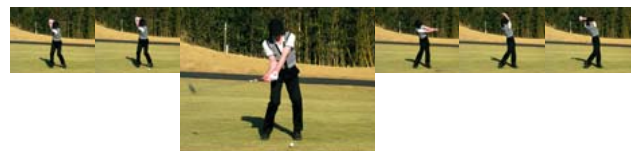
GZ-HM1 offers high-speed shooting, similar to the motor drive function found in some mechanical still cameras. Up to eleven 5.7 Megapixel stills can be shot at 60 frames per second (fps)*. A great way to capture fast-paced action in high quality digital still images.



*30fps when Advanced Image Stabilizer set to ON.

15fps / 10 Megapixel Motor Drive Shooting (up to 6 images)

For continuous stills with even higher image quality, you can also shoot as many as six non-interpolated 10 Megapixel stills at up to 15 frames per second (fps), a speed that rivals or surpasses what's offered by typical 10 Megapixel DSLR cameras.



Dual Mode: 5.7 Megapixel Stills While Recording Full HD Video

GZ-HM1 allows shooting of 1920x1080 Full HD video and 5.7 Megapixel stills at the same time. This way, you won't have to exit the Video mode each time you want to take still images, thereby minimizing the chances of a missed shot.



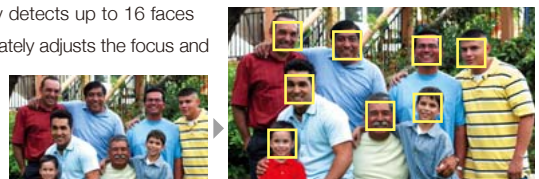
High-Speed Recording for Ultra-Slow Motion Playback

High-speed recording mode shoots ultra-slow motion video to capture dynamic movement that is not visible to the naked eye. Effective tool for sports technique analysis and nature studies. Three speed modes available.



Face Detection Technology

Intelligently detects up to 16 faces then accurately adjusts the focus and exposure for sharp, beautiful images.



Using and Sharing Come Naturally



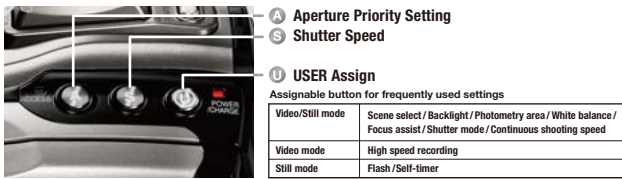
Multi-Function Dial

A lever switch lets you directly access the Brightness and Focus adjustment. And a manual adjustment dial enables precise adjustment for various manual settings without having to go through menus.



Direct Control Buttons

Easily accessible direct control buttons are available for Aperture Priority, Shutter Speed, and user-assignable operations. You can register frequently used settings, offering a higher degree of personal control.



Pro-Style Zoom Lever

GZ-HM1 employs a seesaw-style zoom lever – the type of control found on professional cameras. It's intuitive and enables sure, precise zoom operation.



Laser Touch Operation

Touch-sensitive scroll bar and buttons allow smooth operation for zooming and recording as well as menu selection. Since you don't touch the LCD screen itself, you can keep the screen clean and fingerprint-free.



One Touch Solutions for Sharing & Archiving

Using a PC and provided Everio MediaBrowser software, your special memories can easily be shared with the world, carried around with you, or archived on discs, with one-touch ease. Using the optionally available Everio SHARE STATION DVD Burner, you can directly burn a DVD without using a PC.

One Touch Upload to YouTube™



One Touch Export



One Touch DVD Creation



*Footage recorded in the UXP mode cannot be stored to disc with CU-V50/VD3. Use the Everio MediaBrowser software on your PC to store footage onto Blu-ray disc or hard disk drive.

Everio MediaBrowser – Integrated PC Software Included

GZ-HM1 comes with high-value software that provides everything from file playback, management, simple editing, as well as easy sharing functions, within a single application.



Software System Requirements (Windows®)

- OS:** Microsoft® Windows® XP SP3, Home Edition/Professional (pre-installed)
Microsoft® Windows Vista® SP2, Home Basic/Home Premium (32-bit/64-bit, pre-installed)
Microsoft® Windows® 7, Home Premium (32-bit/64-bit, pre-installed)
- CPU:** Intel® Core™ Duo: at least 1.66GHz, Intel® Core™ 2 Duo: at least 2.13GHz recommended
- RAM:** Windows® XP: at least 1GB, Windows Vista®/Windows® 7: at least 2GB
- Others:** Standard USB2.0 port, Installation of iTunes® is required for exporting to iTunes®, An Internet-accessible environment for uploading videos to YouTube™.

Note: Software for Macintosh is not included. The applicable software is required. The system requirements information above is not a guarantee that the provided software will work on all personal computers meeting those requirements.



HD Everio GZ-HM400 HD Memory Camera

Full-fledged performance similar to GZ-HM1.
Count on its 10.3 Megapixel CMOS, 9 Megapixel stills,
optical image stabilization and full array manual controls for self-expression.
Equipped with 32GB internal memory, and housed in a chic black body.



Everio X GZ-X900 HD Memory Camera

Uniquely styled HD camera balances high performance and design.
Pocket-sized and easy to take anywhere, yet offering video,
still and motor drive capabilities on a par with GZ-HM400.
Ample recording on SD/SDHC card (not provided).



Designed for Serious Shooting

GZ-HM400 has been designed to satisfy serious video enthusiasts.
Accessory shoe allows attachment of external microphone or video light.
You can also attach optional conversion lenses (Wide or Telephoto) for
shooting in various situations.



Slim, Streamlined Design and Lightweight Body

Flat surfaces with minimal protrusions allow smooth
removal from bag or pocket. New carbon textured grip
provides surer holding at a variety of angles. Weighs
only 0.66lbs (298g) including battery and memory card.






Everio Dock for Instant Connection

For convenient connection, GZ-X900 comes with a
docking cradle that includes USB, AV, Component,
and DC connectors. Simply put the camera onto the
dock and you can easily view, charge and share.



The models in this page may be limited in stock or not available in some countries. Please check with your dealer.

Feature Comparison Chart

		 HD Everio	 HD Everio	 Everio X
		GZ-HM1	GZ-HM400	GZ-X900
Storage Media	Internal Memory	64GB Flash	32GB Flash	
	Memory Card (not provided)	SD/SDHC	SD/SDHC	SD/SDHC
Image Sensor		1/2.33" 10.62M Back-illuminated CMOS		1/2.33" 10.3M CMOS
KONICA MINOLTA HD LENS		●		●
Zoom Ratios	Optical	10x	10x	5x
	Dynamic	16x ¹	15x	8x
	Digital	200x	200x	200x
Full HD 1920x1080 Recording		●	●	●
1080/60P Output		●	●	●
HDMI® (V.1.3 with x.v.Color™)		●	●	●
24Mbps High Bit Rate Recording		●	●	●
Super LoLux		●		
Anti-Shake System	Optical Image Stabilizer	●	●	●
	Advanced Image Stabilizer	●		
K2 Technology		●	●	
Still Image Size (max.)		10M (3648 x 2736)	9M (3456 x 2592)	9M (3456 x 2592)
ISO6400 Sensitivity		●		
Auto Flash		●	●	●
Time-Lapse REC		●		
Continuous Still Shooting ²		●	●	●
High Speed Recording ²		●		●
Dual Mode		●	●	●
Face Detection		●	●	●
Multi-Function Dial (Brightness/Focus)		●	●	
Direct Control Buttons		●	●	
Seesaw-Style Zoom Lever		●	●	
Laser Touch Operation		●	●	●
Auto Power On/Off & Auto Lens Cover		●	●	●
One Touch Export		●	●	●
One Touch Upload to YouTube™		●	●	●
One Touch DVD Creation		●	●	● ³
SHARE STATION® Compatible		●	●	●
Everio MediaBrowser HD Edition		●	●	●
2.8" Color LCD		●	●	●
Remote Control		●	●	●
Accessory Shoe		●	●	
Everio Dock				●
Interfaces		HDMI® Out (mini), AV Out, Component Video Out, USB, Headphone Out, Mic In, DC In	HDMI® Out (mini), AV Out, Component Video Out, USB, Headphone Out, Mic In, DC In	On Camera: HDMI® Out (mini), USB, DC In On Dock: AV Out, Component Video Out, USB, DC In
Dimensions with battery		2-11/16" x 2-7/8" x 5-9/16" 67mm x 72mm x 141mm	2-11/16" x 2-7/8" x 5-9/16" 67mm x 72mm x 141mm	1-1/2" x 2-5/8" x 4-15/16" 37mm x 66mm x 124mm
Weight with battery		1.1lbs / 485g	1.1lbs / 485g	0.66lbs / 298g

¹ 15x when Advanced Image Stabilizer set to ON. ² See charts below for details. ³ One touch button is not equipped but possible using Everio MediaBrowser when connected with PC.

Video recording times for each storage media (approx.)

Media	Internal Memory		SDHC Card		
	GZ-HM1 64GB	GZ-HM400 32GB	All Models		
Mode	64GB	32GB	32GB	16GB	8GB
UXP (Avg. 24Mbps)	5hr 54min	2hr 56min	2hr 40min	1hr 20min	40min
XP (Avg. 17Mbps)	8hr 21min	4hr 9min	4hr	2hr	1hr
SP (Avg. 12Mbps)	11hr 49min	5hr 53min	5hr 52min	2hr 56min	1hr 28min
EP (Avg. 5Mbps)	29hr 34min	14hr 44min	14hr 40min	7hr 20min	3hr 40min

Number of storable still images for each storage media (approx.)

Media	Internal Memory		SDHC Card		
	GZ-HM1		All Models		
Mode	64GB	32GB	16GB	8GB	4GB
10M Digital Still (3648 x 2736, Fine)	9999	7180	3550	1770	880

GZ-HM400 / GZ-X900

Media	Internal Memory (GZ-HM400)		SDHC Card		
	32GB	32GB	16GB	8GB	4GB
9M Digital Still (3456 x 2592, Fine)	7730	7810	3860	1930	960

Note: SD/SDHC card is not supplied. To record video, SDHC card with Class 4 or higher performance is required. For UXP mode, please use class 6 or higher. Digital stills can be recorded on both SD and SDHC cards. SD memory cards (256MB to 2GB) and SDHC memory cards (4GB to 32GB) have been tested for the following brands: Panasonic, Toshiba, SanDisk, ATP. Note that using other media may result in recording failure or data loss. Recording time figures are estimations. There may be cases where actual recording time becomes shorter depending on the type of content being recorded.

Speed modes and number of images for Continuous Still Shooting

Speed Mode	GZ-HM1	
	10Mega Continuous Stills	5.7Mega Continuous Stills
High Speed	15fps, up to 6 images	60fps, up to 11 images (AIS* Off) 30fps, up to 11 images (AIS* On)
Medium Speed	7fps, up to 6 images	10fps, up to 11 images
Low Speed	1.4fps, no limit	1fps, no limit

GZ-HM400 / GZ-X900

Speed Mode	GZ-HM400 / GZ-X900	
	9Mega Continuous Stills	5.3Mega Continuous Stills
High Speed	15fps, up to 6 images	60fps, up to 11 images
Medium Speed	7fps, up to 6 images	10fps, up to 11 images
Low Speed	2fps, no limit	1fps, no limit

*AIS = Advanced Image Stabilizer

Speed modes and recording times for High-Speed Recording (approx.)

Speed Mode	Images Size	Recording Time	Playback Time
600fps	640 x 72	2.4sec.	24sec.
300fps	480 x 116	4sec.	20sec.
120fps	480 x 270	4sec.	8sec.

Optional Accessories

Full HD Viewing & Archiving Solutions

HD Media Player

CU-VS100
Multi-Format Player
with Dual SD Card Slot

- Plays back video saved on SD card to enjoy viewing on HDTV
- Also compatible with digital still cameras
- Dual SD Card slot for data copy over two cards
- HDMI*, Audio/Video output
- Remote control provided



Supported file formats

Video	MPEG-4 AVC/H.264 AVCHD	.mts/.m2ts
	MPEG-4 AVC/H.264 (Audio: AAC)	.mov
	MPEG-2 TS	.tod
	MPEG-2 PS	.mod/.mpg
Photo	JPEG	.jpg
Audio	MP3	.mp3
	WAV	.wav

Note: Supports up to 24 Megapixel JPEG files. Some files may not be played back properly even though they are one of these formats. To play back data saved on microSD card, microSD card adapter is required. SD/microSD card and microSD card adapter are not provided.

SHARE STATION*

CU-VD50
Direct DVD
Burner/Player



CU-VD3
Direct DVD
Burner



- Can create AVCHD discs* without using a PC
- DVD burning operation can be controlled by Everio
- Playback directly on your TV/display via HDMI* terminal (CU-VD50)
- Uses DVD-R/-RW disc, DVD-R DL disc supported
- Can be used horizontally or vertically (Stand included)
- Remote control provided (CU-VD50)

*Footage recorded in the UXP mode cannot be stored to disc with CU-VD50/VD3. Use the Everio MediaBrowser software on your PC to store footage onto Blu-ray disc or hard disk drive.

Creative Shooting

GZ-HM1/GZ-HM400 only

GL-V0746*
Wide-Angle
Conversion Lens
• 0.7x (ø46mm)



GL-V1846**
Telephoto
Conversion Lens
• 1.8x (ø46mm)



MZ-V8
Stereo Microphone

- Compact and lightweight design. Plug-in power.



*Vignetting may occur when shooting still images (4:3) at full wide angle.
**Vignetting may occur when fully zoomed out.



More Battery Power

BN-VF808
Data Battery
• 7.2V, 730mAh



BN-VF815
Data Battery
• 7.2V, 1460mAh
Same as provided battery of GZ-HM1/HM400



BN-VF823
Data Battery
• 7.2V, 2190mAh



For GZ-X900

BN-VF908
Data Battery
• 7.2V, 705mAh
Same as provided battery of GZ-X900



AA-VF8
Battery Charger
• A compact, portable stand-alone battery charger for the BN-VF series Data Batteries



VU-VT8K
Battery Charger Kit
• Includes BN-VF808 Data Battery and AA-VF8 Battery Charger



Continuous operation times (approx.)

	GZ-HM1/HM400	GZ-X900
BN-VF808/VF908	1hr 10min	1hr 15min
BN-VF815	2hr 25min	-
BN-VF823	3hr 40min	-

Attention:

Everio includes patented and other proprietary technology and is made to be used with the JVC Data Battery and not with other batteries. JVC cannot guarantee safety or performance of the camcorder when it is operated by other batteries.

For additional information about JVC Data Battery, please contact an authorized JVC dealer in your country.

Easy Carrying

CB-VM30 / CB-VM80
Multifunction
Carrying Bag

- Convenient case to easily carry, store and protect Everio with its series of accessories



CB-VM30



CB-VM80

GZ-X900 only

CB-VM9
Carrying Bag

- Can carry Everio with extra battery



CB-VM9 Black/Red/Blue

Others

VX-HD315N
HDMI* Cable
• HDMI*–HDMI* mini cable (V.1.3 with x.v.Color™), 4.9ft/1.5m



Other Storage and Playback Solutions Recommended Hard Disk Drives/BD Burner

Just connect with Everio via USB*. Recorded data can be stored and played back with easy operation via connected Everio.

FreeAgent™ Desk
500GB, 1TB, 1.5TB



Hard Disk, Design by Neil Poulton
500GB, 750GB, 1TB



LG Blu-ray Drive BE06LU10
Creates Blu-ray discs without a PC!



*Optional USB cable required.



LG Electronics

Provided Accessories

- AC Power Adapter
- Rechargeable Battery Pack
- AV Cable
- USB Cable
- Component Video Cable
- Shoe Adapter (GZ-HM1/GZ-HM400)
- Remote Control
- Everio Dock (GZ-X900)
- Hand Strap (GZ-X900)
- Software CD-ROM

Note: Not all accessories available in every region. Please check with your dealer.

Design and specifications subject to change without notice. The photos of the products featured on this catalog may not be of actual products that are available in your country.

It should be noted that it may be unlawful to re-record pre-recorded tapes, records, or discs without the consent of the owner of copyright in the sound or video recording, broadcast or cable program and in any literary, dramatic, musical, or artistic work embodied therein.

Microsoft® and Windows® are either registered trademarks or trademarks of Microsoft Corporation in the United States and/or other countries. iTunes, iPod, and iPhone are trademarks of Apple Inc. registered in the United States and other countries. This product's YouTube™ upload functionality is included under license from YouTube LLC. The presence of YouTube™ upload functionality in this product is not an endorsement or recommendation of the product by YouTube LLC. YouTube and the YouTube logo are trademarks and/or registered trademarks of YouTube LLC.

*"SHARE STATION" is a trademark of Victor Company of Japan, Limited (JVC), registered in the United States and the European Union. "AVCHD" and the "AVCHD" logo are trademarks of Panasonic Corporation and Sony Corporation. Dolby and the double-D symbol are registered trademarks of Dolby Laboratories. The SD and SDHC logos are trademarks of the SD Card Association. All brand names are trademarks, registered trademarks, or trade names of their respective holders. Screen images and print samples on this catalog are simulated unless otherwise specified. Copyright© 2010, Victor Company of Japan, Limited (JVC). All Rights Reserved.

JVC®

AVAILABLE AT