

JVC

INSTRUCTIONS

PORTABLE AUDIO SYSTEM

RA-P1B/RA-P1W



iPod Compatibility Chart

iPod touch (2nd generation and Fall '09)
iPod touch
iPhone 3GS
iPhone 3G
iPhone
iPod classic
iPod video (5th Generation)
iPod photo (4th Generation)
iPod nano (5th Generation)
iPod nano (4th Generation)
iPod nano (3rd Generation)
iPod nano (2nd Generation)
iPod nano
iPod (4th Generation)
iPod mini (2nd Generation)
iPod mini

For Customer Use:
Enter below the Model No. and Serial No. which are located either on the rear, bottom or side of the cabinet. Retain this information for future reference.

Model No. _____
Serial No. _____

Thank you for purchasing a JVC product.



LVT2122-002A [J,C]
0210KMMCREBET

©2010 Victor Company of Japan, Limited

NOTES on iPod

- This unit can only play the iPod audio. You can use the iPod video function and hear the audio but cannot play the video.
- Do not carry the System with iPod connected. You might drop it down or it might cause damages to the connector part.
- Do not touch or hit the iPod terminal pins or the connector pins directly. It might cause damages to the connector part.
- If the iPod does not play correctly, please update your iPod software to the latest version. - For details about updating your iPod, check on the Apple web site <http://www.apple.com>.
- iPod is a trademark of Apple Inc., registered in the U.S. and other countries.
- iPhone is a trademark of Apple Inc.
- JVC is not responsible for any loss of or damage to iPod that might result from the use of this product.
- Sound distortion may occur when playing back audio sources with high recording levels. When distortion occurs, it is recommended to turn off the equalizer of the iPod. For information on operating the iPod, see the iPod instruction manual.
- If you do not turn on the power of this unit and only connect the iPod to this unit, power may be supplied to the iPod.
- "Made for iPod" means that an electronic accessory has been designed to connect specifically to iPod and has been certified by the developer to meet Apple performance standards.
- "Works with iPhone" means that an electronic accessory has been designed to connect specifically to iPhone and has been certified by the developer to meet Apple performance standards.
- Apple is not responsible for the operation of this device or its compliance with safety and regulatory standards.

CAUTION

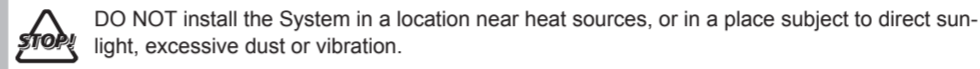
The button in any position does not disconnect the mains line. Disconnect the mains plug to shut the power off completely. The MAINS plug or an appliance coupler is used as the disconnect device, the disconnect device shall remain readily operable.

Rating label is placed on the exterior of the bottom.



Precautions

- Install in a place which is level, dry and neither too hot nor too cold—between 5°C and 35°C (41°F and 95°F).
- Install the System in a location with adequate ventilation to prevent internal heat build-up inside the System.



- Leave sufficient distance between the System and the TV.
- Keep the speakers away from the TV to avoid interference with TV.

For Canada

THIS DIGITAL APPARATUS DOES NOT EXCEED THE CLASS B LIMITS FOR RADIO NOISE EMISSIONS FROM DIGITAL APPARATUS AS SET OUT IN THE INTERFERENCE-CAUSING EQUIPMENT STANDARD ENTITLED "DIGITAL APPARATUS," ICES-003 OF THE DEPARTMENT OF COMMUNICATIONS.

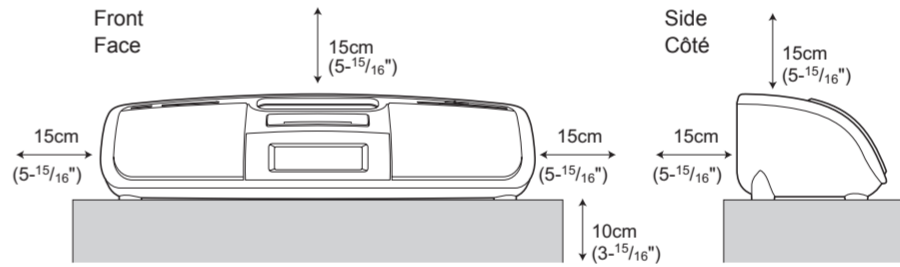
CAUTION

Battery shall not be exposed to excessive heat such as sunshine, fire or the like.

Caution: Proper Ventilation

To avoid risk of electric shock and fire, and to prevent damage, locate the apparatus as follows:

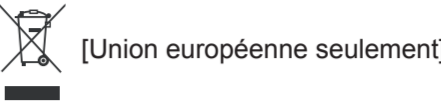
- Front: No obstructions and open spacing.
- Sides/ Top/ Back: No obstructions should be placed in the areas indicated by the dimensions in the illustration.
- Bottom: Place on the level surface. Maintain an adequate air path for ventilation by placing on a stand with a height of 10 cm (3-15/16") or more.



Attention

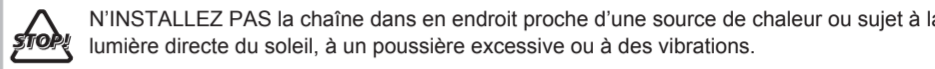
La touche , quelle que soit sa position, ne coupe pas la ligne principale. Débrancher la fiche principale pour couper complètement l'alimentation du secteur. La fiche secteur ou un coupleur est utilisé comme dispositif de déconnexion de l'appareil, et l'appareil déconnecté doit être prêt à être utilisé.

L'étiquette des caractéristiques nominales se trouve sur l'extérieur du coffret.



Précautions

- Installez la chaîne dans un endroit plat, sec, et ni trop chaud, ni trop froid-entre 5°C et 35°C.
- Installez la chaîne dans un endroit avec une bonne ventilation pour éviter tout échauffement intérieur de l'appareil.



- Laissez suffisamment d'espace entre la chaîne et le téléviseur.
- Éloignez les enceintes du téléviseur pour éviter toute interférence avec ce dernier.

Pour le Canada

CET APPAREIL NUMERIQUE RESPECTE LES LIMITES DE BRUITS RADIOELECTRIQUES APPLICABLES AUX APPAREILS NUMERIQUES DE CLASSE B PRESCRITES DANS LA NORME SUR LE MATERIEL BROUILLEUR; "APPAREILS NUMERIQUES", NMB-003 EDICTEE PAR LE MINISTRE DES COMMUNICATIONS.

Attention

Les piles ne doivent en aucun cas être exposées à une chaleur excessive (lumière du soleil, feu, etc.).

Attention: Aération correcte

Pour prévenir tout risque de décharge électrique ou d'incendie et éviter toute détérioration, installez l'appareil de la manière suivante:

- Avant: Bien dégagé de tout objet.
- Côtés/dessus/dessous: Assurez-vous que rien ne bloque les espaces indiqués sur le schéma ci-dessous.
- Dessous: Posez l'appareil sur une surface plane et horizontale. Veillez à ce que sa ventilation correcte puisse se faire en le plaçant sur un support d'au moins dix centimètres de hauteur.

Warnings, Cautions and Others / Mises en garde, précautions et indications diverses

WARNING: TO PREVENT FIRE OR SHOCK HAZARDS, DO NOT EXPOSE THIS APPARATUS TO RAIN OR MOISTURE.

CAUTION:

- Do not block the ventilation openings or holes. (If the ventilation openings or holes are blocked by a newspaper or cloth, etc., the heat may not be able to get out.)
- Do not place any naked flame sources, such as lighted candles, on the apparatus.
- When discarding batteries, environmental problems must be considered and local rules or laws governing the disposal of these batteries must be followed strictly.
- Do not expose this apparatus to rain, moisture, dripping or splashing and that no objects filled with liquids, such as vases, shall be placed on the apparatus.

For U.S.A

Caution: Changes or modifications not expressly approved by party responsible for compliance could void the user's authority to operate the equipment.

Note: This equipment has been tested and found to comply with the limits for a Class B digital device, pursuant to Part 15 of the FCC Rules. These limits are designed to provide reasonable protection against harmful interference in a residential installation. This equipment generates, uses and can radiate radio frequency energy and, if not installed and used in accordance with the instructions, may cause harmful interference to radio communications. However, there is no guarantee that interference will not occur in a particular installation. If this equipment does cause harmful interference to radio or television reception, which can be determined by turning the equipment off and on, the user is encouraged to try to correct the interference by one or more of the following measures:

- Reorient or relocate the receiving antenna.
- Increase the separation between the equipment and receiver.
- Connect the equipment into an outlet on a circuit different from that to which the receiver is connected.
- Consult the dealer or an experienced radio/TV technician for help.

AVERTISSEMENT : POUR PRÉVENIR LES RISQUES D'INCENDIE OU DE CHOCS ÉLECTRIQUES, NE PAS EXPOSER CE APPAREIL À LA PLUIE OU À L'HUMIDITÉ.

ATTENTION:

- Ne bloquez pas les orifices ou les trous de ventilation. (Si les orifices ou les trous de ventilation sont bloqués par un journal un tissu, etc., la chaleur peut ne pas être évacuée correctement de l'appareil.)
- Ne placez aucune source de flamme nue, telle qu'une bougie, sur l'appareil.
- Lors de la mise au rebut des piles, veuillez prendre en considération les problèmes de l'environnement et suivre strictement les règles et les lois locales sur la mise au rebut des piles.
- N'exposez pas cet appareil à la pluie, à l'humidité, à un égouttement ou à des éclaboussures et ne placez pas des objets remplis de liquide, tels qu'un vase, sur l'appareil.

Pour les Etats-Unis

Attention : Les changements ou les modifications qui ne sont pas explicitement approuvés par la partie responsable de l'observance pourraient mettre fin au droit de l'utilisateur d'utiliser le matériel.

Remarque: Cet appareil a été testé et il s'est avéré conforme aux limites applicables à un appareil numérique de classe B, en vertu de la Partie 15 des Règles de la FCC. Ces limites sont conçues de manière à assurer une protection raisonnable contre les interférences nuisibles dans une installation résidentielle. Cet appareil produit, utilise et peut émettre une énergie de haute fréquence et, s'il n'est pas installé et utilisé en conformité avec les instructions, il peut causer des interférences nuisibles aux communications radio. Il n'y a, toutefois, aucune garantie que des interférences ne se produiront pas dans une installation particulière. Si cet appareil cause effectivement des interférences nuisibles à la réception de la radio ou de la télévision, ce qu'on peut établir en mettant l'appareil en marche et à l'arrêt, nous encourageons l'utilisateur à tenter de corriger l'interférence par une ou plusieurs des mesures suivantes :

- Réorienter ou déplacer l'antenne de réception ;
- Accroître la séparation entre l'appareil et le récepteur ;
- Brancher l'appareil dans une prise ou un circuit autre que celui auquel le récepteur est branché ;
- Consulter un vendeur ou un technicien radio/TV expérimenté pour obtenir de l'aide.

ATTENTION

Afin d'éviter tout risque d'électrocution, d'incendie, etc.:

- Ne pas enlever les vis ni les panneaux et ne pas ouvrir le coffret de l'appareil.
- Ne pas exposer l'appareil à la pluie ni à l'humidité.

Pour éviter tout risque d'incendie et pour prévenir tout dommage,

- N'utilisez aucun autre adaptateur CA que l'adaptateur secteur fourni.
- N'utilisez pas l'adaptateur CA d'un autre appareil.

Specifications

Model	RA-P1B/RA-P1W	
Type	Portable audio system	
Amplifier	Power Output	2W + 2 W 1 kHz 10 % THD, 4 Ω
Input Sensitivity/ Impedance	AUDIO IN	250 mV / 47 k Ω
Tuner	Tuning Range	87.5 MHz - 108.0 MHz
	Preset Stations	10
Speaker	1way full range, diameter 40 mm x 2	
Input Terminal	External DC IN (for AC adaptor)	
	AUDIO IN (mini jack)	
iPod connector	Output Power : DC5 V $\bar{\bar{=}}$ 500 mA	
Power Source	DC 6 V $\bar{\bar{=}}$ 2 A (EXTERNAL DC IN)	
	DC 6 V $\bar{\bar{=}}$ (SIZE R6, AA BATTERY OR EQUIVALENT x 4)	
Power Consumption	0.5 W (When not under load) / 1.00 W or less (in Standby mode) / 3.5 W (with iPod devices connected)	
AC adaptor	Input : AC 120 V \sqrt{v} , 60 Hz 0.5A	
	Output : DC 6 V $\bar{\bar{=}}$ 2 A	
Dimensions (W x H x D)	(W) 240 mm x (H) 58 mm x (D) 81 mm (9-1/2" x 2-5/16" x 3-1/4")	
Weight (Without batteries)	0.35 kg (0.78 lbs)	
Accessory	AC adaptor	

- Specifications and appearance are subject to change without prior notice.

Troubleshooting

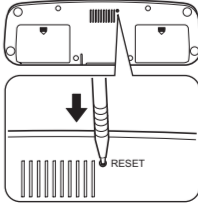
If you are having a problem with your System, check this list for a possible solution before calling for service.

In these cases	Check the following points
Power does not come on.	<ul style="list-style-type: none">AC adaptor is not inserted securely. Plug in securely.The batteries are exhausted.Is the timer set? Turn off the alarm.
No longer works.	Press the RESET button (see "Resetting the unit" below).
Cannot set the iPod.	<ul style="list-style-type: none">Is the Dock adaptor properly mounted on the unit? Make sure to mount the Dock adaptor properly.
Cannot operate iPod.	<ul style="list-style-type: none">Is the iPod firmly connected to the connector plug of the unit?Is the iPod properly functioning? Test the iPod functions in stand alone condition.
iPod cannot be charged.	<ul style="list-style-type: none">Is the iPod firmly connected to the connector plug of the unit?Is the AC adaptor connected? The iPod cannot be charged while the Unit is operated on batteries.
Hard to listen to broadcasts because of noise.	The FM antenna is not properly extended and positioned.
When the volume level is manually set higher than "16", the unit automatically lowers the level to "16".	The batteries run low. Replace the batteries with new ones, or use the AC adaptor.

Resetting the unit

If "Troubleshooting" does not eliminate malfunctioning (failure to operate or display properly, etc.), press the RESET button on the bottom of the unit with something having a sharp point, while the unit is turned on. After pressing RESET button, unplug the AC adaptor and wait a while before plugging it again.

- While resetting the unit, the clock is also reset. Adjust the clock after resetting the unit.



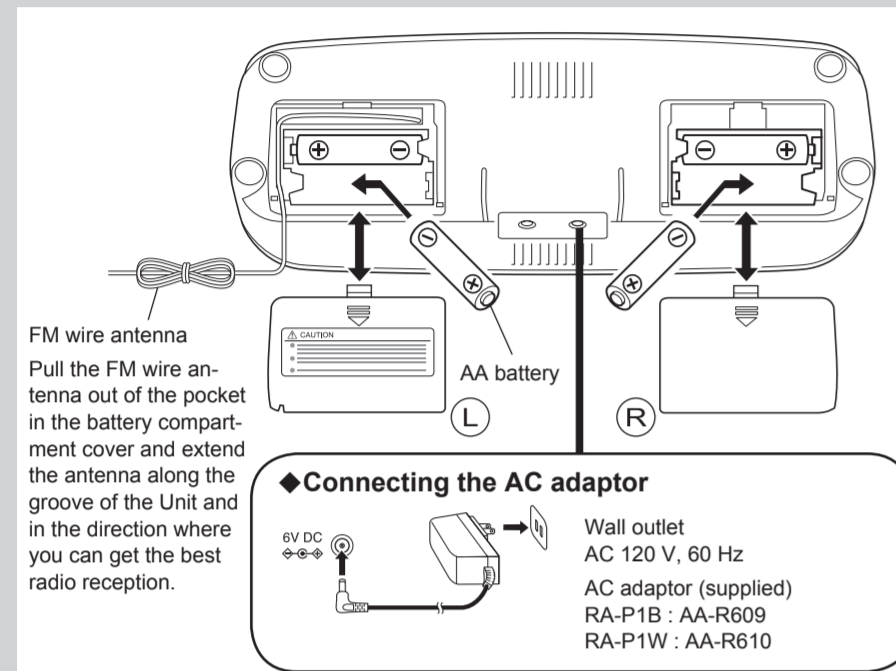
Preparation of the Unit

■ Setting the batteries / AC adaptor

This Unit runs on AA batteries or from the AC adaptor. To load batteries, open the covers of the battery compartments and insert AA batteries (not supplied) in the right and left compartments (four batteries total). Be sure to match the poles (+/-) correctly.

CAUTION

Read "Safety Precautions" on page 1 thoroughly in order to handle the dry batteries correctly.



SNOOZE/BRIGHTNESS button

Pressing this button displays the current time.
* If you press and hold this button while the power is turned on, the display light turns on and off.
* Even if the power is not supplied to the Unit, the display is lit.

■ Setting the time

Set the time with the power off.

1 Press and hold the SOURCE button.

2 While the time display is flashing, press the SOURCE button.

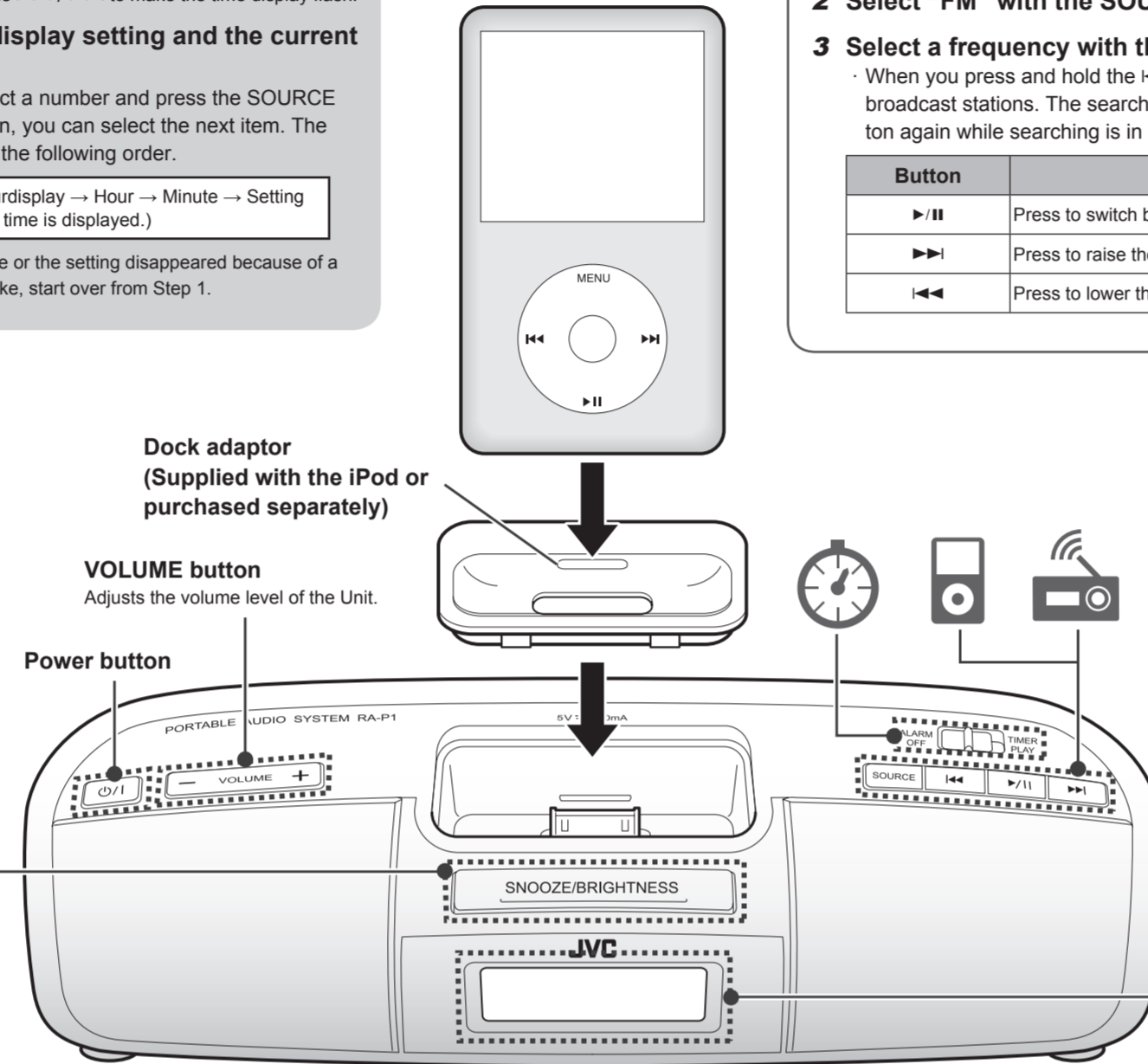
* If is flashing, press / to make the time display flash.

3 Select the time display setting and the current time.

Use / to select a number and press the SOURCE button to enter it. Then, you can select the next item. The items are switched in the following order.

24-hour display/12-hour display → Hour → Minute → Setting complete. (The current time is displayed.)

* If you made a mistake or the setting disappeared because of a power failure or the like, start over from Step 1.



Listening to FM Broadcasts

■ Listening to the radio

Extend the wire antenna to use it.

1 Turn on the power.

2 Select "FM" with the SOURCE button.

3 Select a frequency with the / button.

When you press and hold the / button, the Unit automatically searches for broadcast stations. The search is finished when a signal is picked up. Press the button again while searching is in progress to quit the search.

Button	Function
/	Press to switch between the frequency and channel display.
	Press to raise the frequency or select a preset channel.
	Press to lower the frequency or selects a preset channel.

■ Registering broadcast station in preset channels (Presetting)

You can preset up to 10 preferred stations (P01 to P10).

1 Select "FM" with the SOURCE button.

2 Press the / button.

A channel number is displayed.

3 Select your desired channel number with the / button, and press and hold the / button.

The channel number starts flashing.

4 While the channel number is flashing, use the / button to select the frequency of the station that you wish to register and press the / button.

The selected frequency will be registered in the selected channel.

* If you made a mistake or the setting disappeared because of a power failure or the like, start over from Step 1.

■ Listening to the channel of a broadcast station you registered

1 Press the / button while "FM" is selected.

A channel number is displayed and the signal of the registered frequency is picked up.

2 Select a channel number with the / button.

The signal of the frequency registered to the selected channel number is picked up.

■ About the Display Indications

Functions used	Displayed numbers, icons, etc.	Icon	Description
Volume level adjustment	00 to 32		Lights when the timer mode is selected.
iPod	iPod		Flashes while the Unit is snoozing.
FM radio	FM 87.5 to 108.0 MHz (Frequencies) P01 to P10 (Channels)		
External device	Audio in 00 to 32 (Volume level)		



Listening to / Charging the iPod

■ Listening to the iPod

1 Set the iPod in the Unit.

- Set the dock adaptor and then set the iPod.
- Securely insert the iPod all the way into the adaptor.
- A terminal cover is covering the connector terminal when you purchase the Unit. Remove the cover before use.
- If you do not connect the iPod, be sure to cover the connector terminal with the terminal cover. Dust or the like may infiltrate the Unit and cause malfunctions.
- When you operate the iPod, support the iPod from the back side. Excessive force may damage the connector terminal.

2 Turn on the power.

When the iPod is selected as the audio source, it automatically starts playback.

3 Select "iPod" with the SOURCE button.

The Unit automatically starts playback.

Button	Function
/	Playback / Pause Press and hold this button to switch the iPod to the sleep mode.
	Next song / Fast forward (Press and hold.)
	Previous song (Press this button during playback to jump back to the beginning of the track.) / Fast rewind (Press and hold.)

Dock adaptor (Supplied with the iPod or purchased separately)

- You can remove the dock adaptor by pulling up the slot with your fingernail or a fine-tipped tool.
- Pay attention not to injure your fingertip or damage the connector.
- If a dock adaptor was not supplied with your iPod, purchase a dock adaptor from Apple Inc. For details, visit Apple's website. <<http://www.apple.com/>>

■ Charging the iPod

1 Connect the AC adaptor to the Unit.

* The iPod battery is not charged while the Unit is operated on battery power supply.

2 Set the iPod to the Unit.

- Charging starts.
- The iPod is charged while any function of the Unit is used.
- The iPod is charged while the Unit is turned off.
- See the iPod instruction manual about charging times.

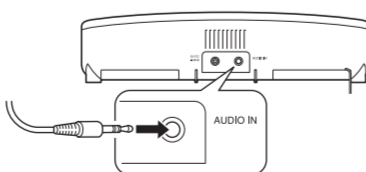


Listening to External Devices

1 Connect an external device to the Unit.

Connect the external device to the AUDIO IN jack on the rear of the unit using a stereo mini plug cord (not supplied).

To the audio output of a CD/MD/digital audio player, etc. or headphones terminal



2 Turn on the power.

3 Select "Audio in" with the SOURCE button.

4 Start playback from the external device.



Setting the Timer of the iPod, FM Radio or Buzzer

■ Setting the timer

Set the timer with the power off.

1 Press and hold the SOURCE button.

2 Use the / button to display and press the SOURCE button.

3 Select the time and so on when to start playback.

Use the / button to select the setting and press the SOURCE button to enter it. Then, you can select the next item. The items are switched in the following order.

* If you made a mistake or the setting disappeared because of a power failure or the like, start over from Step 1.

[Playing back from the iPod]

Hour → Minute → Sound source (iPod) → Volume level when timer playback starts → Playback time → Setting complete. (The current time is displayed.)

· The last selected track is automatically played back.

· The playback time is set in 5-minute increments from 10 to 30 minutes.

[Receiving the signal from the FM radio]

Hour → Minute → Sound source (FM) → Channel is selected. → Volume level when timer playback starts → Playback time → Setting complete. (The current time is displayed.)

· The playback time is set in 5-minute increments from 10 to 30 minutes.

* Register desired broadcast stations in preset channels in advance.

[Sounding buzzer]

Hour → Minute → Sound source (bb/ buzzer) → Setting complete. (The current time is displayed.)

* You cannot set the volume level of the buzzer.

* If you do not stop the buzzer, it keeps sounding for 3 minutes.

4 Switch the ALARM switch to "TIMER PLAY."

appears on the display.

* When the ALARM switch is switched to "TIMER PLAY", the Unit is locked with the power off.

■ Stopping Timer Playback

[Pausing timer playback (Snoozing function)]

Press the SNOOZE/BRIGHTNESS button during timer playback.

Timer playback stops temporarily but it restarts after 9 minutes. This operation repeats up to 6 time.

[Stopping the timer playback]

Press the power button during timer playback.

Timer playback stops and it restarts at the same time the next day.

■ Cancelling the timer

Switch the ALARM switch to "ALARM OFF."