

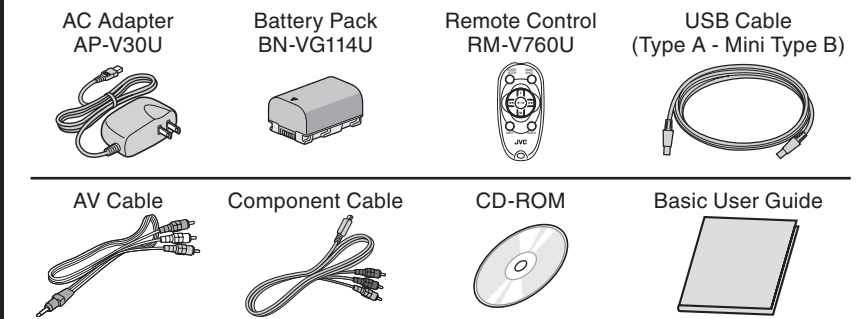


Everio

Easy Start Guide

Accessories

SUPPLIED ACCESSORIES FOR THE CAMERA



AVAILABLE ACCESSORIES FOR THE CAMERA

Product Name	Description
Battery Pack • BN-VG114U • BN-VG121U	• Provides a longer recording time than the battery pack that comes with this unit or it can also be used as a spare battery pack.
Battery Charger • AA-VG1U	• Enables the battery pack to be charged without using this unit.

To order any of these accessory please visit www.JVC.com or call 1-800-858-6442

TYPES OF USABLE SD CARDS

Memory Cards	Capacity	Video (UXP)	Still images (FINE) 3520x1980
SDHC Cards <SD High-capacity>	Supports 4GB to 32GB	32GB	2hr.58min. 9999
		16GB	1hr.29min. 5030
		8GB	44min. 2510
		4GB	21min. 1250
SD Cards	Supports 256MB to 2GB SD Cards	2GB	- 630
		1GB	- 310
		512MB	- 150
		256MB	- -

Note: Operations are confirmed on the following SD cards.

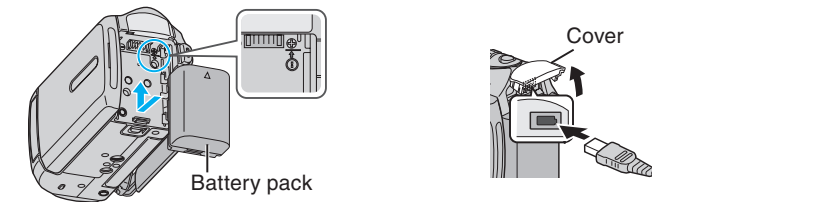
Manufacturer	Panasonic, TOSHIBA, SanDisk, ATP
Video	Class 4 or higher compatible SDHC card (4 GB to 32 GB) • It is recommended to use Class 6 when recording video in UXP mode.
Still image	SD card (256 MB to 2 GB), SDHC card (4 GB to 32 GB)

• Using cards other than those specified above may result in recording failure or data loss.

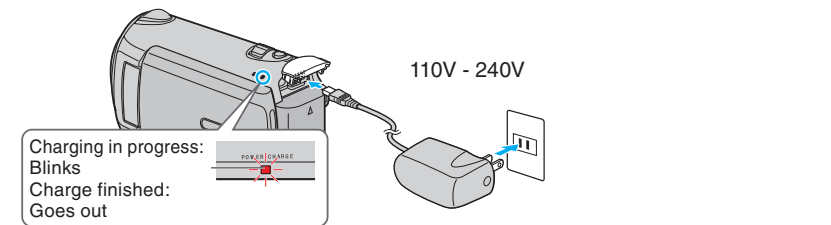
Getting Started

CHARGING THE BATTERY

- Close the LCD to turn Off the Power
- Attach battery
- Connect AC adapter into DC Terminal



- Connect the AC adapter to outlet



Battery Type	Charging Time (Approx.)	Actual Recording Time (Approx.)
BN-VG114U (Supplied)	2hr.30min.	45min.
BN-VG121U	3hr.30min.	1hr.10min.

Note: The battery pack is not charged at the time of purchase

CAUTION

- Be sure to use JVC battery packs. If you use any other battery packs besides JVC battery packs, safety and performance cannot be guaranteed.

INSERTING THE SD CARD*

- Open the card slot cover
- Install an SD Card



*SD card not included



Customer Service
TOLL FREE: 1-800-252-5722

For our online tutorials please visit:
<http://camcorder.jvc.com/tutorials.jsp>

Register your EVERIO online at:
REGISTER.JVC.COM
and receive a special offer.

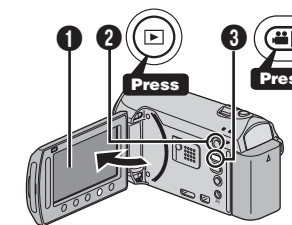
JVC U.S.A.
A Division of JVC Americas Corp.
1700 Valley Road, Wayne, NJ 07470
www.jvc.com

C0S5 0110FOH-SW-VM

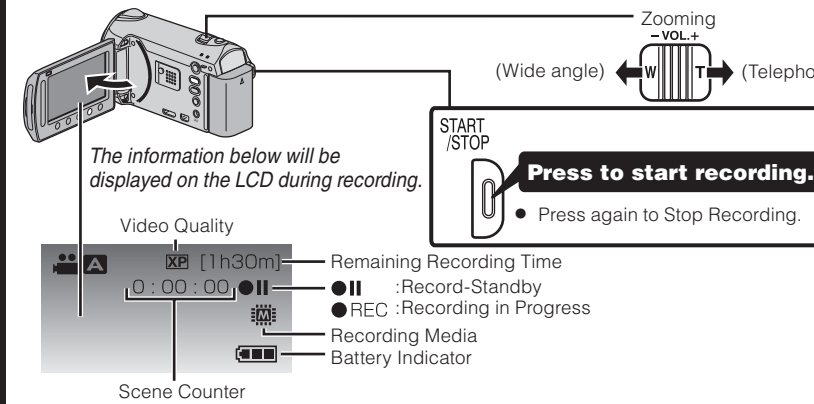
Recording Files

RECORDING FILES

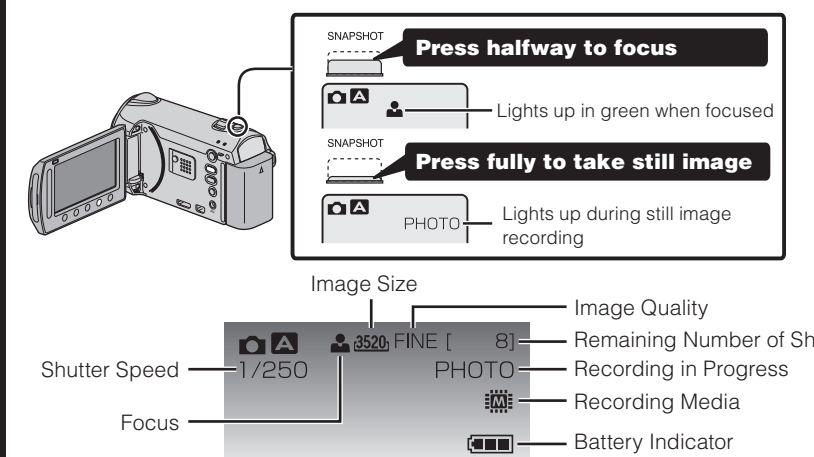
- Open the LCD to turn on the unit.
- Press button to select the Recording mode.
- Press button to select the video or still image mode.



VIDEO RECORDING

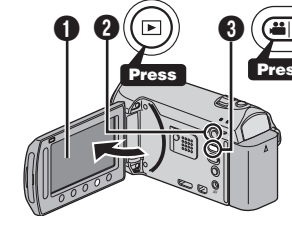


STILL IMAGE RECORDING

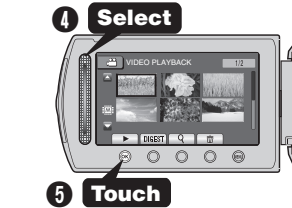


PLAYBACK VIDEOS

- Open the LCD monitor to turn on the unit.
- Press button to select the playback mode.
- Press button to select the video or still image mode.



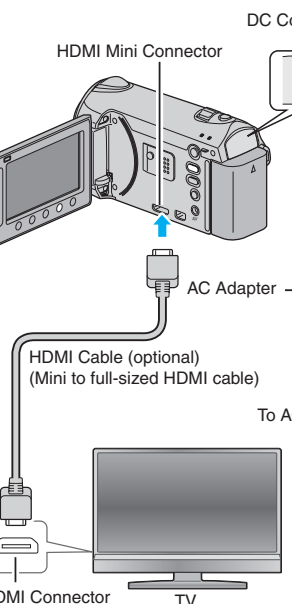
- Select from the index screen (highlight thumbnails) using the Slider.
- Touch the button.



PLAYBACK ON A TV

Preparation:

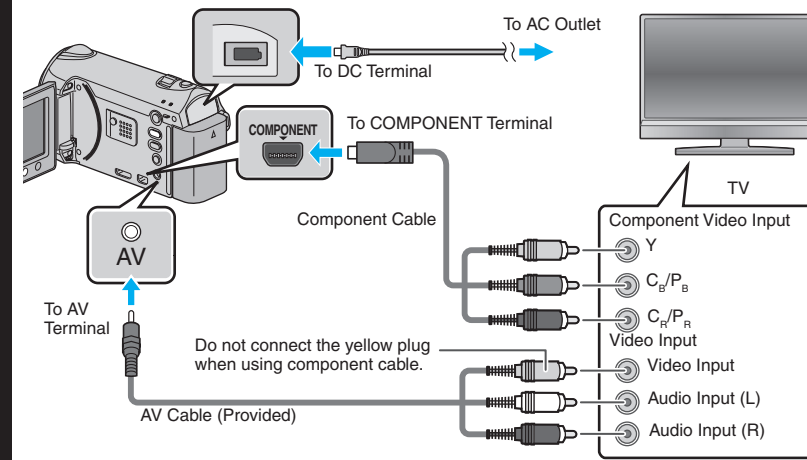
- Turn off both camera and TV.
- To connect using the HDMI mini connector
 - When connecting to a 1080p compatible TV, set [HDMI OUTPUT] to [AUTO 1].



PLAYBACK ON A TV (CONT.)

To connect using the COMPONENT/AV connector

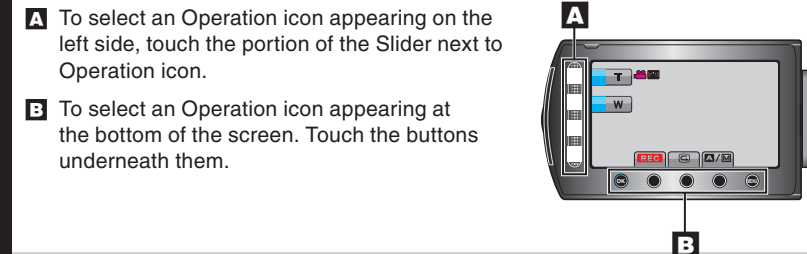
- Change the settings in [COMPONENT OUTPUT]/[VIDEO OUTPUT] according to the connection.



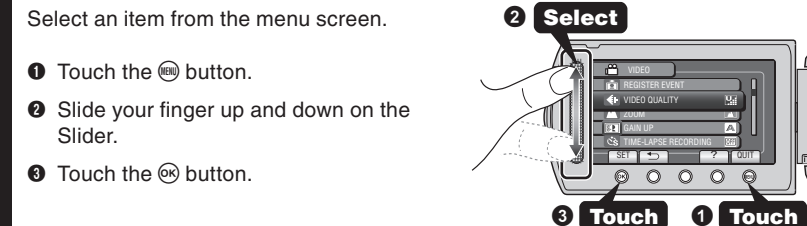
Playback Operation

- After the connection with TV is completed
- Turn on the camera and the TV.
 - Select the TV input switch.
 - Start playback on the camera.

USING THE OPERATION BUTTONS



CHANGING MENU SETTINGS



- Touch the button.
- Slide your finger up and down on the Slider.
- Touch the button.

How to Install Software

PC USERS

Preparation:

- Load the provided CD-ROM into the PC.
- In Windows Vista, the auto play dialog box appears.

- Click [Easy Installation]. Follow the on-screen instructions.

- Click [Next].

- Click [Finish].

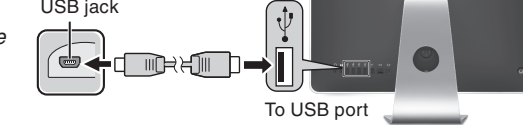
- Everio MediaBrowser icon are created on the desktop.



Mac USERS

- You may use the software supplied with the Mac Computer to view and edit files from the Everio Camera.
- Connect the Everio Camera to the Mac Computer using a USB Cable.

Note:
Files must be transferred to the Mac Computer for editing.

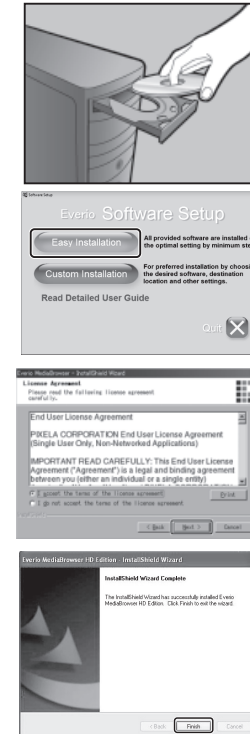


iMovie and iPhoto

You can import files from this unit to a PC using Apple's iMovie '09 (video) or iPhoto (still image). To verify the system requirements, select "About This Mac" from the Apple menu. You can determine the operating system version, processor and amount of memory.

Note:

- For the latest information on iMovie or iPhoto, refer to the Apple website.
- For details on how to use iMovie or iPhoto, refer to the help file of the respective softwares.
- There is no guarantee that the operations will work in all computer environments.



File Backup to Computer

FILE BACKUP (Windows PC)

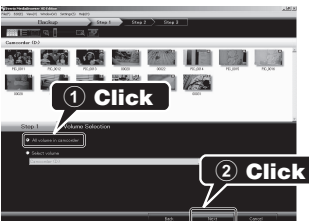
Preparation:

- Install the Everio MediaBrowser software onto the PC.
- Make sure that enough space is left in the PC's HDD.
- Close the LCD monitor to turn off the camera.
- Connect the camera to the PC with the USB cable.

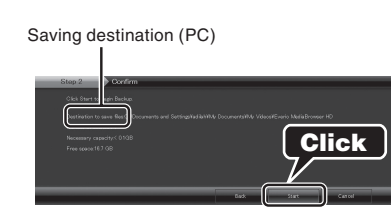
- Open the LCD monitor to turn on the camera.
- Select [BACK UP] on the Camera. Everio MediaBrowser starts on the PC.



- Click [All volume in camcorder] and click [Next].



- Click [Start]. The Backup starts.

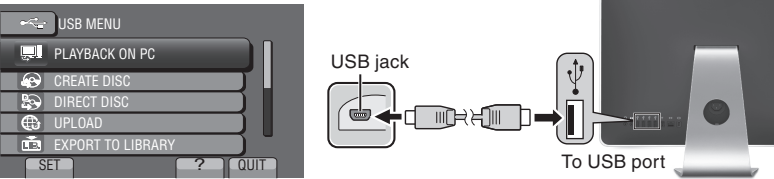


FILE BACKUP (Mac Computer)

Preparation:

- Make sure that enough space is left in the Mac's HDD.
- Close the LCD Monitor to turn off the camera.
- Connect the camera to the Mac Computer with the USB cable.

- Open the LCD monitor to turn on the camera.
- Select [PLAYBACK ON PC] on the Camera.



- Copy and Paste the files to the Mac Computer for backup.

Uploading Videos to YouTube™

HOW TO RECORD A FILE (VIDEO CLIP) FOR YouTube™

- Press the button to select the recording mode.
- Press the button to select the video mode.
- Press the UPLOAD/EXPORT button to display the [UPLOAD SHOOTING] / [EXPORT SHOOTING] menu.
- Select [UPLOAD SHOOTING] and touch the button.
 - The mode switches between ON and OFF with every touch.
 - After setting, touch the button.
- Press the START/STOP button to start recording.
 - Recording stops automatically after 10 minutes.

HOW TO UPLOAD A FILE(VIDEO CLIP) TO YouTube™ (Windows PC only)

Uploading Videos

- You can upload your videos to YouTube™ using the provided software "Everio MediaBrowser".
- Install the software on your PC and connect this unit to the PC.
- For details on how to use the software, refer to the help file. "Installing the Provided Software" "Connecting this unit to PC"

Trouble with Uploading Videos

- Check if you have created an account with YouTube™.

Trouble with Using the Provided Software Everio MediaBrowser

Consult the customer service center below.

- Pixela User Support Center

Region	Language	Phone #
USA and Canada	English	+1-800-458-4029 (toll-free)
Europe (UK, Germany, France, and Spain)	English/German/French/Spanish	+800-1532-4865 (toll-free)
Other Countries in Europe	English/German/French/Spanish	+44-1489-564-764
Asia (Philippines)	English	+63-2-438-0090
China	Chinese	10800-163-0014 (toll-free)

- For details on how to upload to YouTube™ or transfer files to iTunes®, refer to "MediaBrowser Help"



Uploading Videos to iTunes®

HOW TO RECORD A FILE FOR iTunes®

- Press the button to select the recording mode.
- Press the button to select the video mode.
- Press the UPLOAD/EXPORT button to display the [UPLOAD SHOOTING] / [EXPORT SHOOTING] menu.
- Select [EXPORT SHOOTING] and touch the button.



- The mode switches between ON and OFF with every touch.
- After setting, touch the button.

- Press the START/STOP button to start recording.

HOW TO TRANSFER FILES TO iTunes® (Windows PC only)

- You can export videos to iTunes® using the provided software "Everio MediaBrowser".
- Install the software on your PC and connect this unit to the PC.
- For details on how to use the software, refer to the help file.
 - For details on transferring files to iPod, refer to the help file of iTunes®.

Trouble with Exporting Files to iTunes®

- Refer to "Q&A", "Latest Information", "Download Information", etc. in "Click for Latest Product Info" in the help file of the provided Everio MediaBrowser software.

Trouble with Using the Provided Software Everio MediaBrowser

- Consult the customer service center on previous page.

TRADEMARK

- Windows® is either registered trademark or trademark of Microsoft Corporation in the United States and/or other countries.
- Macintosh is a registered trademark of Apple Inc.
- iTunes, iMovie, iPhoto are trademarks of Apple Inc., registered in the U.S. and other countries.
- YouTube and the YouTube logo are trademarks and/or registered trademarks of YouTube LLC.
- Bluetooth and the Bluetooth logo are registered trademark of Bluetooth SIG, Inc.

USING THE Bluetooth (GZ-HM550 only)

Headset

- You can use a headset (headphone that is integrated with a microphone) to listen to the recorded audio sound during shooting.
- By configuring the "Bluetooth MIC AUDIO" setting in advance, you can insert narration into the movie while shooting.

GPS Receiver

- You can use the GPS receiver to record the location information of a recorded movie or still image.

BIP/OPP

- Transfers still image data to a Bluetooth-compliant device.

Smartphone

- You can use a registered mobile phone as a remote control for this unit using the pre-installed application on the phone.
- The smartphone application can be downloaded from the following URL. <http://www.jvc-victor.co.jp/english/download/bluetooth/index.html>
- For details on Bluetooth, refer to the Detailed User Guide. <http://manual.jvc.co.jp/index.html>

USEFUL TECHNIQUES FOR RECORDING

Preparation

- Always check available memory space and battery power in advance. Make sure your battery is fully charged.

Stabilizing Your Picture

- Look for a place to sit down and take your video.
- Look for something you can set your camera on.

Camera Movement

- If you must move the camera, do it slowly.

Zooming

- As a general rule, your video will look better if you zoom the lens before you start your recording.
- Focus on the subject first, then begin recording.

Exposure

- Remember to shoot with the sun or the primary light source behind you. Keeping the range of contrast in your scene to a reasonable level is the easiest way to improve the picture quality.
- Pay special attention to objects in the LCD screen that appear very washed out or over exposed.

Length of Recording

- Always try for at least a 10 second recording.
- When in doubt, let the recording continue longer. It is much easier to edit unneeded material later.