

JVC D-ILA PROJECTOR FIRMWARE UPDATE PROCEDURE

This document describes the procedure to update the firmware for JVC D-ILA 3D Projectors:

- DLA-X3
- DLA-RS40

NOTES

- It is important that the correct firmware update file be used for the appropriate projector.
- Use of incorrect firmware file could render the projector inoperative.
- Customized settings on the projector will be erased during firmware update.
- Note the customized settings and re-enter them after firmware update is completed.
- End-user agrees to use this firmware at their own risk.
- End-user bears the total responsibility for any failure arising from installing the firmware.

FILE DOWNLOAD

- Download the appropriate firmware update file for your projector model to your PC desktop.
- It is a self-extracting file and installs the ILA-FPJ Updater to the PC.

REQUIRED TOOLS

- JVC Update Program Installer; “ILA-FPJ Updater”
- **32 bit** PC running Windows XP or Windows Vista with Administrator level access
- USB to Mini-USB cable
- Philips screwdriver

USB DRIVER INSTALLATION

- JVC “ILA-FPJ Updater” program should be installed on your PC at this point.
- Next step is to install the USB driver so PC can communicate with the projector.
- Administrator level access to the PC is required to proceed.
- **If the driver does not install automatically, it can be installed manually.**
- **The USB Driver and .INF file can be found in the application folder; For example: c:\Program Files\ILA-FPJ\Updater\X3_V1_2\.**

1. Put the projector in STANDBY mode.
2. Unplug the power cord from the projector and wait for RED Standby LED to extinguish.
3. Remove the screw and cover located above the AC connector to expose the USB connector.



4. Connect PC to Projector using the USB cable as shown above.
 - a. Mini USB end connects to projector
 - b. Large USB end connects to the PC
5. Press and hold the [STANDBY] button on the projector while plugging in the power cord.
 - a. The three LEDs will light to indicate “Download Mode” as shown in photo below.
 - b. Release [STANDBY] button after three LEDs light.



6. PC detects the projector as new hardware.
 - a. Found New Hardware Wizard will open to help install the drivers.

7. In the Hardware Wizard screen, for the question “Can Windows connect to Windows Update to search for software?” click on “No, not this time”, and then click [Next].

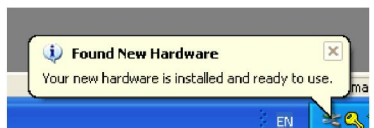


8. Click on “Install the software automatically (Recommended)”, then click [Next].



9. The driver will be installed and a confirmation message is displayed that the installation is finished.

10. When the driver is installed successfully, the message below will appear.



After a few seconds, if the driver has installed successfully, you will see this confirmation message.

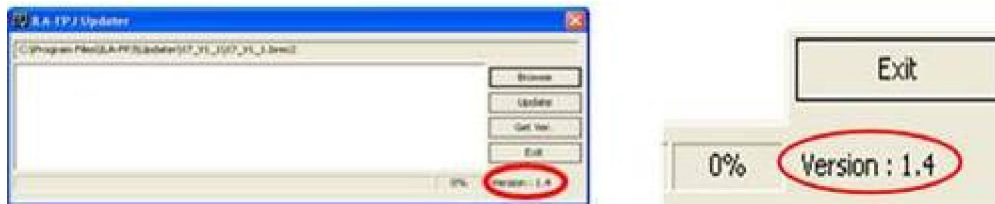
11. Unplug AC power cord from the projector and wait for LEDs to extinguish to exit “Download mode”.
- You may leave unit in “Download mode” and proceed to step 6 of Firmware update if you plan to update firmware immediately.

FIRMWARE UPDATE

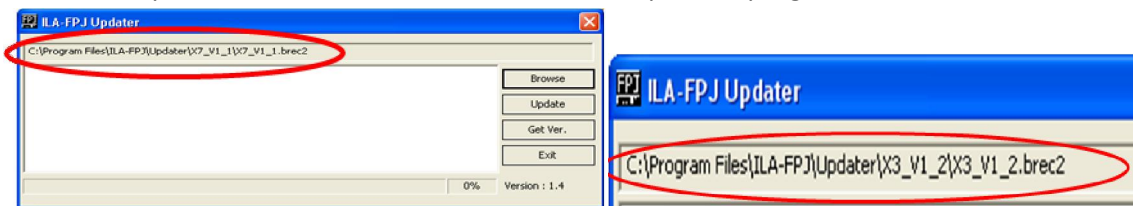
1. Put the projector in STANDBY mode.
2. Unplug the power cord from the projector and wait for RED Standby LED to extinguish.
 - a. It is necessary to remove HDMI connected devices to allow complete Power OFF.
3. Remove the screw and cover located above the AC connector to expose the USB connector.
4. Connect PC to Projector using the USB cable as shown above.
 - b. Mini USB end connects to projector
 - c. Large USB end connects to the PC
5. Press and hold the [STANDBY] button on the projector while plugging in the power cord.
 - a. The three LEDs on the projector will light to indicate “Download Mode”.
 - b. Release [STANDBY] button after three LEDs light.



6. Launch the “ILA-FPJ Updater program” from the START→ All Programs button.
7. Verify “Version: 1.4” is showing in bottom right corner of “ILA-FPJ updater” program.
 - a. This is the” ILA-FPJ updater” program version not Projector Firmware version.
 - b. Previous versions of “ILA-FPJ updater” are not compatible.

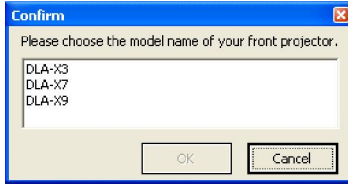


8. Click on [Browse] button and navigate to locate and [Open] the appropriate data file.
 - a. For example, X3_V1_2.brec2
 - b. Try looking in Program Files\ILA-FPJ\Updater to find program folder if there is trouble.
 - c. The path and filename will be shown at the top of the program.

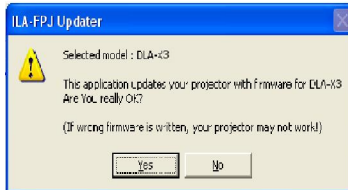


9. Click [Update] button.

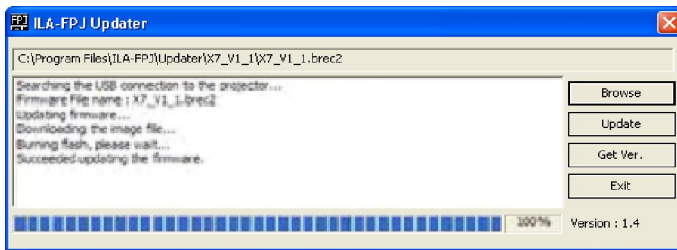
10. Choose the appropriate projector model, and click [OK].



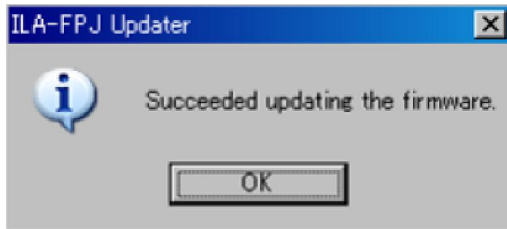
11. Confirm the selected projector model to be updated, and then click [Yes] start downloading the image file.



12. The update will begin.
- DO NOT UNPLUG PROJECTOR OR USB CABLE** once updating completes.
 - It takes approximately 2 minutes to update.
 - The progress bar shows the activity.



13. When finished updating click on [OK] button.... **DO NOT UNPLUG PROJECTOR OR USB CABLE.**



14. After a 5-second wait, press the [STANDBY/ON] button on the projector.
- The 3 LEDs will flash slowly for approximately 40 seconds.
 - The 3 LEDs will stop flashing and unit will go into STANDBY MODE.
 - You may leave USB connected and go to step 5 of FIRMWARE VERSION CHECK if you want to confirm the firmware version now.
 - Disconnect USB and operate the unit as normal if you do not desire to confirm the firmware version.
 - If **ERROR FLASHING of LEDs** occurs, refer to TROUBLESHOOTING section of this manual.
15. Reinstall USB cover and Screw once complete.

FIRMWARE VERSION CHECK

1. Power ON the projector and wait for Video (or Blue Screen) to display.
2. Connect PC to Projector using the USB cable and open ILA-FPJ updater software.
 - a. Mini USB end connects to projector
 - b. Large USB end connects to the PC
3. Press [Get Ver.] button in ILA-FPJ Updater while video (or Blue Screen) is displayed.
 - a. Nothing will occur immediately.
 - b. Please wait approx 30sec to 1min for Version.
4. After approx 30seconds the Firmware version will be displayed.
5. Disconnect USB and press [Exit] to close ILA-FPJ Updater.
6. Reinstall USB cover and Screw.

TROUBLESHOOTING

➤ ILA FPJ SHOWS ERROR CODE 10

- Projector is not in Download mode, disconnect cables and restart from beginning.
 - Firmware Update >> step 5
 - Restart Firmware Update steps from beginning
- Projector is not connected to PC with USB, verify USB connection
 - Firmware Update >> step 4
 - Restart Firmware Update steps from beginning
- PC driver is not installed, install driver
 - Verify USB driver is installed
 - USB Driver Installation steps

➤ ILA FPJ SHOWS ERROR CODE 50

- USB driver is installed and Projector connected but it is not communicating.
 - "Get Ver." only works when Projector is ON and video is displayed.

➤ Error Flashing of LEDs occur after the update

1. Unplug AC power and wait for all LED to extinguish.
2. Plug in AC and power ON projector.
 - a. If power ON OK, verify Firmware version.
 - b. If power ON NG, reinstall firmware.
3. Unplug AC power and wait for all LED to extinguish.
 - a.if unsuccessful 2nd time contact JVC call Center.

➤ No User Menu after update / "Loading Please Wait" message appears

1. Press [standby/on] button and allow unit to power OFF fully.
2. Unplug AC power and wait for all LED to extinguish.
3. Reinstall firmware and check it again.
 - a. Follow update procedure carefully to ensure there is no mistake or missed step.
4. Error flashing may occur after 2nd install.
 - a. Follow troubleshooting steps for this issue if it occurs.
 - b. Contact JVC is trouble continues or you need assistance.