



Everio

Easy Start Guide

This easy start guide is designed to navigate you to using your new Everio quickly. Please refer to the owner's manual for a detailed listing of features.

For additional online video tutorials, please visit:
<http://camcorder.jvc.com/tutorials.jsp>



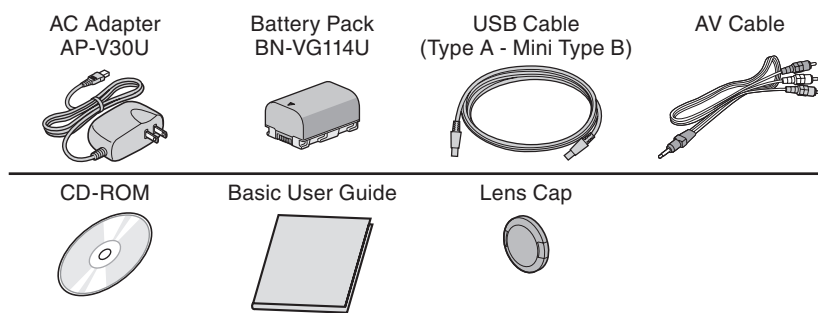
Customer Care Center
TOLL FREE 1-800-252-5722

For additional online video tutorials, please visit:
<http://camcorder.jvc.com/tutorials.jsp>

Register your EVERIO online at:
REGISTER.JVC.COM
and receive a special offer.

JVC U.S.A.
A Division of JVC Americas Corp.
1700 Valley Road, Wayne, NJ 07470
www.jvc.com

SUPPLIED ACCESSORIES FOR THE CAMERA



AVAILABLE ACCESSORIES FOR THE CAMERA

Product Name	Description
Battery Pack • BN-VG114U • BN-VG121U	• Provides a longer recording time than the battery pack that comes with this unit or it can also be used as a spare battery pack.
Battery Charger • AA-VG1U	• Enables the battery pack to be charged without using this unit.

To order any of these accessory please visit www.JVC.com or call 1-800-858-6442

TYPES OF USABLE SD CARDS

Memory Cards	Capacity	Video (UXP)	Still images (1920x1080/FINE)
SDHC Cards <SD High-capacity>	Supports 4GB to 32GB	32GB	2hr.40min.
		16GB	1hr.20min.
		8GB	40min.
		4GB	20min.
SD Cards	Supports 256MB to 2GB	2GB	-
		1GB	-
		512MB	-
		256MB	-

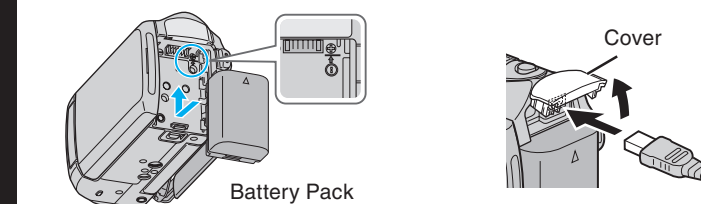
Note: Operations are confirmed on the following SD cards.

Manufacturer	Panasonic, TOSHIBA, SanDisk, ATP
Video	Class 4 or higher compatible SDHC card (4 GB to 32 GB)
Still image	SD card (256 MB to 2 GB), SDHC card (4 GB to 32 GB)

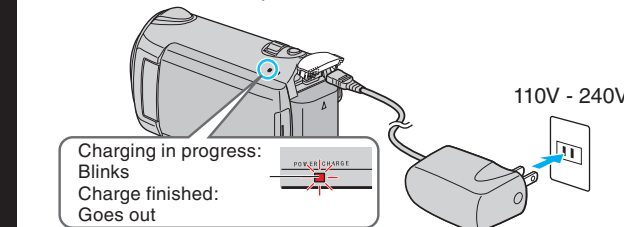
- Using cards other than those specified above may result in recording failure or data loss.

CHARGING THE BATTERY

- Close the LCD to turn Off the Power
- Attach battery
- Connect AC adapter into DC Terminal



- Connect the AC adapter to outlet



Battery Type	Charging Time	Continuous Recording	Actual Recording
BN-VG114U (Supplied)	2hr.30min.	1hr.45min.	1hr.
BN-VG121U	3hr.30min.	2hr.40min.	1hr.30min.

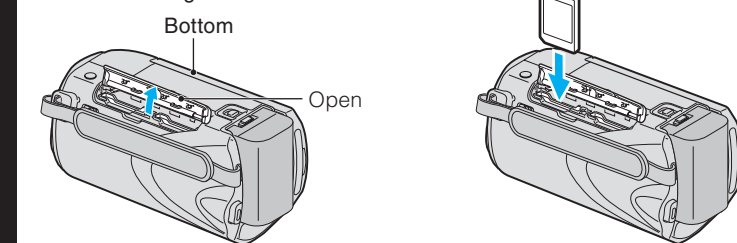
Note: The battery pack is not charged at the time of purchase

CAUTION

- Be sure to use JVC battery packs. If you use any other battery packs besides JVC battery packs, safety and performance cannot be guaranteed.

INSERTING THE SD CARD*

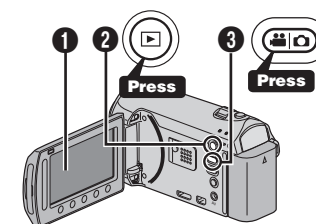
- Open the card slot cover
 - Turn off the power before inserting or removing a card
- Install an SD Card



* SD card not included

PLAYBACK VIDEOS

- Open the LCD monitor to turn on the unit.
- Press button to select the playback mode.
- Press button to select the video or still image mode.



- Select from the index screen (highlight thumbnails) using the Slider.
- Touch the button.

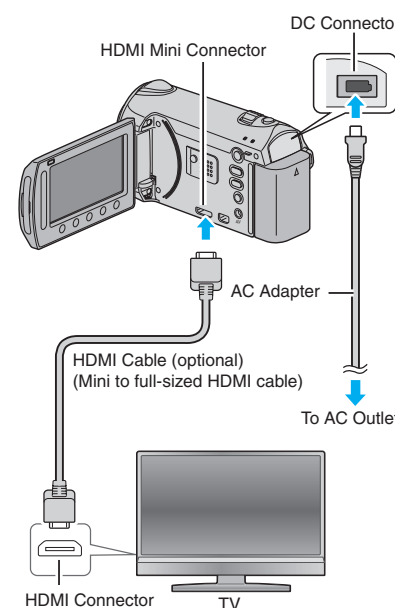


PLAYBACK ON A TV

Preparation:

- Turn off both camera and TV.

- To connect using the HDMI mini connector
 - When connecting to a 1080p compatible TV, set [HDMI OUTPUT] to [AUTO 1].



Accessories

Recording Techniques

Preparation

- Always check available memory space and battery power in advance.
- Make sure your battery is fully charged.
- A spare battery may be useful.

Stabilizing Your Picture

Try these tips to improve the image:

- Look for a place to sit down and take your video.
- Look for something you can set your camera on.
- Consider using a tripod or a monopod to further steady your video.

Camera Movement

The most enjoyable and professional looking videos generally have very little camera movement

- Treat all movements as a special effect.
- If you must move the camera, do it slowly.

Zooming

As a general rule, your video will look better if you zoom the lens before you start your recording:

- Focus on the subject first, then begin recording.
- If you must zoom during a recording, treat it as a special effect and zoom slowly.

Exposure

- Remember to shoot with the sun or the primary light source behind you.
- Keeping the range of contrast in your scene to a reasonable level is the easiest way to improve the picture quality.
- Pay special attention to objects in the LCD screen that appear very washed out or over exposed.
- Making a simple change in how the camera is aimed or by zooming in slightly, you may reduce contrast to a reasonable range.

Length of Recording

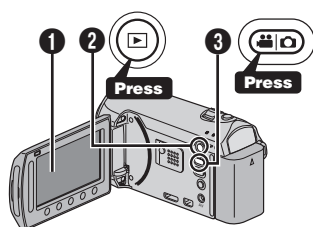
Many recordings are ruined by stopping the recording too soon and missing the best moment:

- Always try for at least a 10 second recording.
- When in doubt, let the recording continue longer.
- It is much easier to edit unneeded material later.

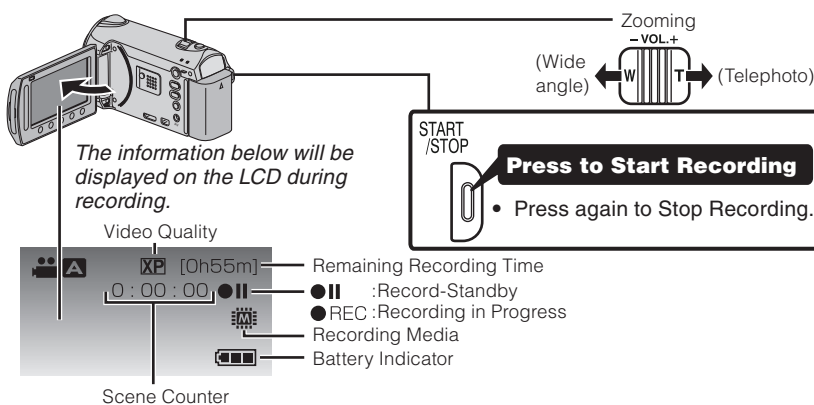
RECORDING FILES

- Open the LCD monitor to turn on the unit.
 - Remove the lens cap.
- Press button to select the recording mode.
- Press button to select the video or still image mode.

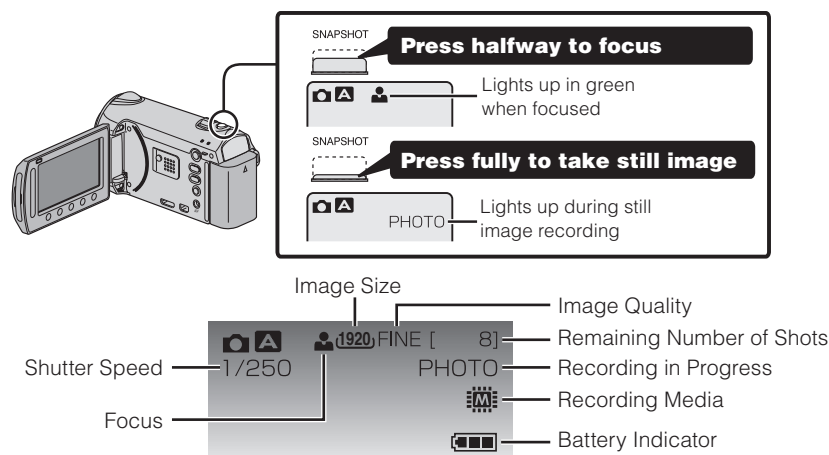
The Mode will be displayed in the LCD



VIDEO RECORDING



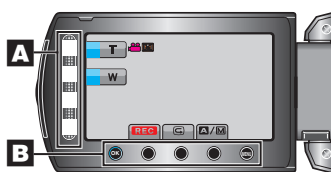
STILL IMAGE RECORDING



Using the Laser Touch Control

USING THE OPERATION BUTTONS

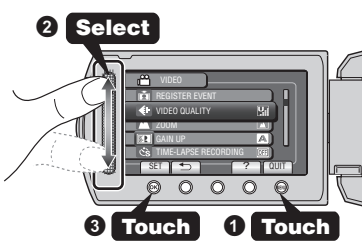
- To select an Operation icon appearing on the left side, touch the portion of the Slider next to Operation icon.
- To select an Operation icon appearing at the bottom of the screen, touch the buttons underneath them.



CHANGING MENU SETTINGS

Select an item from the menu screen.

- Touch the button.
- Slide your finger up and down on the Slider.



- Touch the button.

Getting Started

Playing Back Files

Recording Files

KEEP IT HIGH DEFINITION (Windows)

Backup to a computer or external hard disk drive

The provided JVC software also makes it easy to copy your video to a computer or an external hard disk drive.

For the customer with a Blu-ray Player:

The provided JVC software lets you create high definition AVCHD discs using standard blank DVD-R media, and your Windows PC with DVD Burner.

An AVCHD disc is a great choice because it contains the original HD video, which can be stored on inexpensive blank DVD-R media.

These discs can be played back in virtually any recent Blu-ray player that has the AVCHD logo.

MAKE A DVD OR VHS (NO PC REQUIRED!)

It's easy to connect a JVC HD Everio to a traditional DVD Recorder or VHS Recorder.

UPLOAD TO YouTube™

YouTube™ is a great way to share you videos, in either HD or SD quality. JVC makes it easy.

WORKING WITH Apple

JVC HD Everio camcorders also work great with Apple. There are a few things to check for best results.

Each of these solutions is explained in detail in the following sections.

HOW TO RECORD A FILE (VIDEO CLIP) FOR YouTube™

- 1 Press the button to select the recording mode.
- 2 Press the button to select the video mode.
- 3 Press the UPLOAD button and switch on the function.
 - The mode switches between ON and OFF with every press.
- 4 Press the START/STOP button to start recording.
 - Recording stops automatically after 10 minutes.

HOW TO UPLOAD A FILE(VIDEO CLIP) TO YouTube™ (Windows PC only)

Uploading Videos

You can upload your videos to YouTube™ using the provided software “Everio MediaBrowser”.

Install the software on your PC and connect this unit to the PC.

- For details on how to use the software, refer to the help file. “Installing the Provided Software”
- “Connecting this Unit to PC”

Trouble with Uploading Videos

- Check if you have created an account with YouTube™.

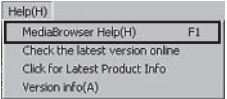
Trouble with Using the Provided Software Everio MediaBrowser

Consult the customer service center below.

- Pixela User Support Center

Region	Language	Phone #
USA and Canada	English	+1-800-458-4029 (toll-free)
Europe (UK, Germany, France, and Spain)	English/German/French/Spanish	+800-1532-4865 (toll-free)
Other Countries in Europe	English/German/French/Spanish	+44-1489-564-764
Asia (Philippines)	English	+63-2-438-0090
China	Chinese	10800-163-0014 (toll-free)

- For details on how to upload to YouTube™, refer to “MediaBrowser Help”.



TRADEMARK

- Windows® is either registered trademark or trademark of Microsoft Corporation in the United States and/or other countries.
- Macintosh is a registered trademark of Apple Inc.
- iMovie, iPhoto are trademarks of Apple Inc., registered in the U.S. and other countries.
- YouTube and the YouTube logo are trademarks and/or registered trademarks of YouTube LLC.

INSTALL Everio MediaBrowser (Windows)

Everio MediaBrowser is included with your camcorder. It lets you archive and organize your videos. It also lets you create discs and upload video to YouTube™, and other popular web sites.

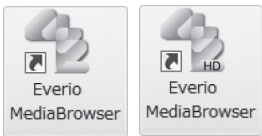
Preparation:

- Load the provided CD-ROM into the PC.
- In Windows Vista, the auto play dialog box appears.

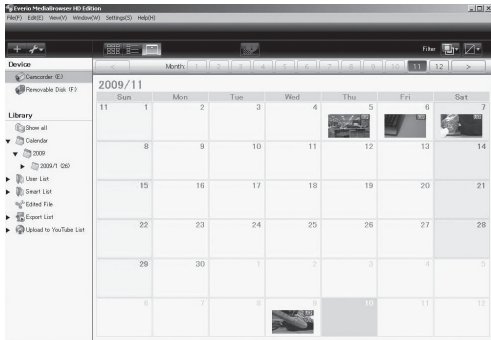
- 1 Click [Easy Installation].
Follow the on-screen instructions.

- 2 Click [Next].

- 3 Click [Finish].
 - Everio MediaBrowser icons are created on the desktop.



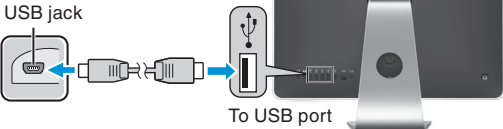
- Everio MediaBrowser uses a Calendar based interface that makes it easy to find any video you have recorded by selecting the appropriate date.



WORKING WITH iMovie & iPhoto

- You may use the software supplied with the Mac Computer to view and edit files from the Everio Camera.
- Connect the Everio Camera to the Mac Computer using a USB Cable.

Note:
Files must be transferred to the Mac Computer for editing.



iMovie and iPhoto

You can import files from this unit to a PC using Apple's iMovie '08, '09 (video) or iPhoto (still image). To verify the system requirements, select “About This Mac” from the Apple menu. You can determine the operating system version, processor and amount of memory.

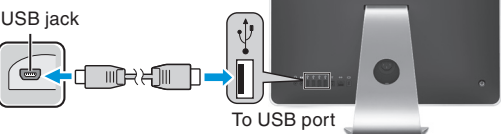
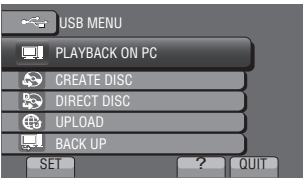
- Note:
- For the latest information on iMovie or iPhoto, refer to the Apple website.
 - For details on how to use iMovie or iPhoto, refer to the help file of the respective software.
 - There is no guarantee that the operations will work with all computer environments.

SIMPLE FILE BACKUP WITH A Mac

Preparation:

- Make sure that enough space is left in the Mac's HDD.
- Close the LCD Monitor to turn off the camera.
- Connect the camera to the Mac Computer with the USB cable.

- 1 Open the LCD monitor to turn on the camera.
- 2 Select [PLAYBACK ON PC] on the Camera.



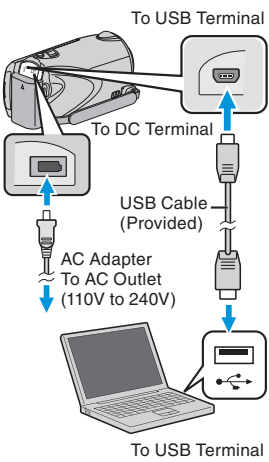
- 3 Copy and Paste the files to the Mac Computer for backup.

FILE BACKUP (Windows)

Preparation:

- Install the Everio MediaBrowser software onto the PC.
- Make sure that enough space is left in the PC's HDD.
- Close the LCD monitor to turn off the camera.
- Connect the camera to the PC with the USB cable.

- 1 Open the LCD monitor to turn on the camera.
- 2 Select [BACK UP] on the Camera.
Everio MediaBrowser starts on the PC.



- 3 Click [All volume in camcorder] and click [Next].



- 1 Click [Start].
The Backup starts.



VIEW YOUR VIDEO (Windows)



- To view video that is still on your camcorder, click on Device>Camcorder in the left side panel of Everio MediaBrowser.
- To view video that has already been archived to the computer, click on Library>Calendar and then choose the date the video was recorded.

Note:
Choose Settings/Preferences to see the folder where MediaBrowser stores your videos. You can also playback your videos from this folder in most popular media players.

DISC DISC CREATION (Windows)

- Everio MediaBrowser makes it possible to create AVCHD discs to archive your recordings in their original high definition quality.
- You can use any standard DVD-R, DVD-RW, DVD+R or DVD+RW disc.
- Recordings made in the XP, SP or EP mode are recorded with no loss in quality. Recordings made in the UXP mode are first converted to the XP mode, and then recorded.
- A standard 4.7GB disc will hold approximately 35 minutes of video in the highest quality setting.
- AVCHD discs can be played back in any Blu-ray player that is AVCHD compatible. Just look for the AVCHD logo.



Preparation:

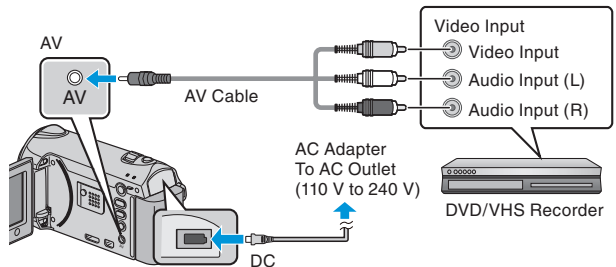
- Click on the “Create Disc” button.
- Select the video clips you wish to include.
- Choose a menu background and enter a menu title.
- Create the AVCHD disc.



Note:
In order to include UXP recordings on your AVCHD discs, be sure to go to Settings>Disc Creation Settings, and under “AVC Disc Creation in UXP mode”, choose “Re-encode to XP mode quality level”.

RECORD TO A DVD OR VHS RECORDER

- It is also possible to record to a DVD or VHS recorder. Please note that this will create a standard definition recording with standard definition picture quality.



Preparation:

- Use the supplied AV cable. The yellow connection is video. The white connection is left channel audio. The red connection is right channel audio. Connect this cable to the A/V input on your DVD or VHS Recorder.
- Follow your DVD/VHS recorder instructions to copy (dub) the video.