

Made for  
 iPod  iPhone

# KD-A725

Dual USB/CD Receiver with Front AUX

PANDORA®  
 internet radio

Headunits



MP3/WMA WAV\*

MOS-FET 50W x 4

20W x 4 RMS

2 Connections for iPod/iPhone

Application Mode for iPod/iPhone

iPod/iPhone 2-Way Control for iPod/iPhone

Full Digital Full Speed Charging 1.0A Support

Drive Change Mode



\* Not Available on CD

Recommended Features



## Key Benefits

The front and rear dual USB ports offer audio entertainment as well as connection with the advanced optional Bluetooth® adapter. You can even connect two iPod/iPhone players via USB and enjoy music in full-speed digital transfer, play the sound of iPod/iPhone apps including Pandora Radio, and also charge the players. Other features include High-Pass Filter, TI/Burr-Brown 24-bit DAC, Front AUX-IN, HS-IVI tuner, and 3-band parametric iEQ. You can also enjoy HD Radio® and SAT Radio with optional tuners.

### \* Dual USB for iPod/iPhone

Connect your iPod/iPhone to the unit's USB port with the iPod/iPhone dock connector, and enjoy music in clear, digital sound with full-speed transfer. Your iPod/iPhone's battery will be charged during connection. With dual USB, you can use both front and rear ports to connect a USB Bluetooth® adapter and another device, or even two iPod/iPhone players at the same time. The audio files in your USB device can be easily accessed by PC-like folder structure.



\* USB playback not supported for NTFS formatted devices. When partitions are created, only the first partition can be read.

### \* Ready for Bluetooth® Adapter (KS-BTA50)

With the optional KS-BTA50 USB Bluetooth® adapter, you can enjoy all the advantages of Bluetooth® Wireless Technology including hands-free calling, voice recognition dialing, audio streaming, phone book transfer, Connects 2 Phones, compatibility check, and A to Z number search. Phone Book Access Profile (PBAP) is also available with compatible cell phones.

- Hands-Free Calls
- Audio Streaming
- Phone Book Transfer
- Connect 2 Phones
- Phone Book Access



MOBILE ENTERTAINMENT

# KD-A725 Dual USB/CD Receiver with Front AUX

## \*USB Audio for iPod/iPhone

Connect your iPod/iPhone to the unit's USB port with the iPod/iPhone dock connector, and enjoy music in clear, digital sound with full speed transfer. Your iPod/iPhone's battery will be charged during connection.



## \*Application Mode for iPod/iPhone

You can enjoy JVC-original iPod/iPhone apps such as Drive Data etc., as well as play the sound from other apps including Pandora, with high current ready power supply.

New from 2011

JVC-original iPod/iPhone Apps

Drive Smart

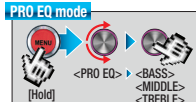
PANDORA internet radio

Don't miss the details! Go to the feature page for JVC original app content

## \*3-Band Parametric iEQ

Adjusts the center frequency, bandwidth and levels at each of 3 bands. Plus 5 factory and 1 user EQ presets. With Pro mode, the EQ can customize the sound for your ears. A separate setting for the subwoofer level is also available.

Control Range	Bass:	50Hz, 100Hz, 200Hz
	Mid-range:	500Hz, 1kHz, 2kHz
	Treble:	5kHz, 10kHz, 15kHz
Level	-6~+6dB	
Q (band with)	0.7~2.0Q	



## \*High-Pass Filter

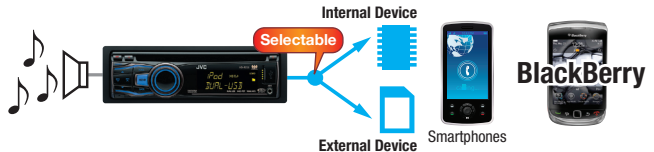
High-Pass Filter lets you control high-frequency sound settings by filtering out frequencies below the cutoff level set by the user.



## \*Drive Change Mode (for Smartphones/BlackBerry®)

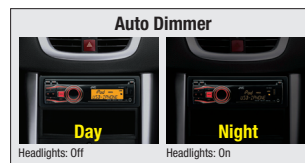
Listen to music from your choice of internal or external devices (SD/Music SD) on compatible BlackBerry® devices or other smartphones by connection to the unit's USB port.

- \* Phone stays charged while connected
- \* Switch between external and internal memory from receiver's controls
- \* Play/Pause/Skip tracks from receiver or wireless remote control



## \*Separated Variable-Color

Select from over 30,000 colors to match your car's illumination. Separate colors can be set for the keys and display, providing stylish coordination and easier operation. Day and night memory settings are available for auto dimmer.



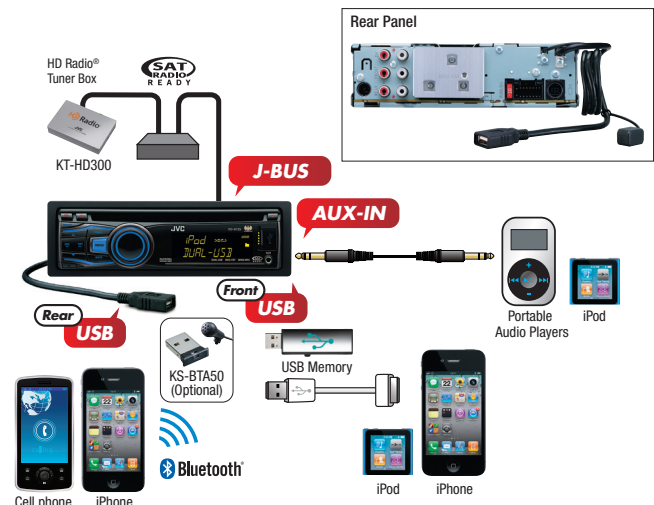
## \*Steering Wheel Remote Ready

With an optional adapter, you can control an advanced JVC headunit from the steering wheel remote control that comes factory standard with your car.



Key Specifications	
Maximum Power Output	50W x 4
Continuous Power Output (RMS)	20W RMS x 4 Channels at 4Ω ≤
*1 Total Harmonic Distortion	1.0% THD*1 + N
HPF*2 (Front/Rear)	off / 62 / 95 / 135Hz (-12dB/oct)
LPF (Subwoofer)	off / 55 / 85 / 120Hz (-12dB/oct)
Line Pre-Output Terminals	3 ( Front + Rear + Subwoofer)
Subwoofer Output with Level/Frequency Control	✓
Line Output Level	2.5V
Subwoofer Output Level	2.5V
Subwoofer Gain Control	INF - 0dB*3
Load Impedance	4Ω (4 - 8Ω allowable)
Line Output Impedance	≤ 600Ω
*2 Set according to LPF figures *3 MUTE / -14dB / -12dB / -10dB / -8dB / -6dB / -4dB / -2dB / 0dB	
Dimensions (W x H x D)	
Installation Size	7 3/16" x 2 1/16" x 6 1/4"      182 x 52 x 158 mm
Panel Size	7 7/16" x 2 3/8" x 3/8"      188 x 59 x 8.5 mm
Detachable Face Plate	6 3/4" x 1 13/16" x 7/8"      170 x 46.4 x 20.5 mm

## Connections



## Quick Reference of iPod/iPhone Compatibility\*1

	iPod 4th generation*2 (color display)	iPod 5th generation (video)	iPod nano 2nd generation*3 (aluminum)	iPod classic*4 (2009)	iPod nano 3rd generation (video)	iPod nano 4th generation (video)	iPod nano 5th generation (video camera)	iPod touch 4th generation*5 (8GB 32GB 64GB)	iPhone 3GS*6 (8GB 16GB 32GB)	iPod nano 6th generation (8GB 16GB)	iPhone 4 (16GB 32GB)
Playback Connection	N/A	✓USB	✓USB	✓USB	✓USB	✓USB	✓USB	✓USB	✓USB	✓USB	✓USB

\*1 Please visit [www.jvc.co.jp/english/car/](http://www.jvc.co.jp/english/car/) for iPod/iPhone compatibility details. \*2 Same compatibility applies for the following 4th generation and earlier iPod models: iPod with dock connector, iPod mini, and iPod with color display. \*3 Same compatibility applies for iPod nano (1st generation) \*4 Same compatibility applies for iPod classic (160GB (2007) only). \*5 Same compatibility applies for iPhone, and iPhone 3G.