

KD-AHD79

HD Radio®/USB/CD Receiver with Dual AUX

Made for
iPod iPhone

Separated
Variable-Color
VARIO



Headunits

Built-in HD Radio®

Enjoy a multitude of HD Radio® programs in premium digital sound, without having to connect external tuners. FM radio sounds equivalent to CD quality, and AM as good as FM.

HD Radio®

COMPACT
disc
DIGITAL AUDIO
TEXT

HD Radio®
This HD Radio receiver enables:

PSD

HD2/HD3

Digital Sound

iTunes® Tagging

MP3/WMA

MOS-FET
50W x 4

20W x 4
RMS

iTunes
Tagging

External Mode
for iPod/iPhone

iPod ↔ Headunit
2-Way Control
for iPod/iPhone

Full Digital
Full Speed Charging

Recommended Features

Ready for
Bluetooth®
Adapter

Phone Book
Access Profile

Connects
2 Phones
(Full Time)

Dual
AUX

USB G3
iPod/iPhone

SAT
Radio Ready

Built-in
HD Radio
Tuner

Steering
Wheel
Remote
Ready

3 Pre-Output
(Front+Rear+Subwoofer)

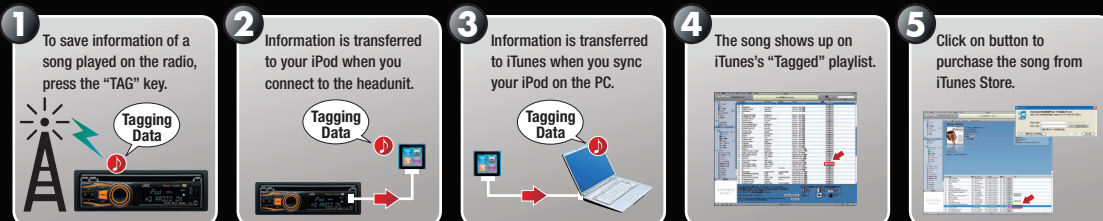
Key Benefits

Enjoy a multitude of programs in premium digital sound with built-in HD Radio® tuner. With the iTunes Tagging feature, songs playing on the radio can be tagged for purchase on the iTunes Store. The dual AUX input offers flexible options including Bluetooth® connection with an optional adapter. iPod/iPhone songs can be played via the front USB, as well as app sound with External Mode. The players can be controlled on either the headunit or the player side. Song search is quick and easy by a simple operation using the menu key and the volume knob. MOS-FET power amp and 24-bit DAC provide superior sound. With the Separated Variable-Color, you can customize the keys and display from 30,000 x 30,000 color combinations. Other features include Front AUX-IN, 5.0V pre-out, High-Pass Filter, and 3-band parametric iEQ.

iTunes Tagging

iTunes Tagging lets you "tag" songs playing on the radio, so you can purchase later from the iTunes store.

How It Works:



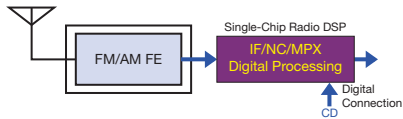
JVC

MOBILE ENTERTAINMENT

KD-AHD79 HD Radio®/USB/CD Receiver with Dual AUX

*DiAS II Digital Tuner

This all-digital, further evolved version of DiAS tuner delivers versatile next generation performance. Its advantages include the higher sensitivity 13µV AM reception, improved FM separation from 40dB to 50dB, and better Multipath Noise Canceller for FM reception while driving.



*Ready for Bluetooth® Adapter (KS-BTA100)

With the optional KS-BTA100 adapter, you can enjoy the safety and convenience of Bluetooth® Wireless Technology such as hands-free calling, voice dialing, and audio streaming. The compact all-in-one adapter has microphone/keys/LED functions, and can be easily connected via the AUX.



Hands-Free Calls - Redial Call
- Voice Dialing - Private Mode

Audio Streaming - Noise/Echo Cancellation

*External Mode for iPod/iPhone

You can listen to the sound of iPod/iPhone apps, such as games, web radio, and YouTube, with high current ready power supply.

* For sound only.



*High-Pass Filter

High-Pass Filter lets you control high-frequency sound settings by filtering out frequencies below the cutoff level.



*USB Audio for iPod/iPhone

Connect your iPod/iPhone to the unit's USB port with the iPod/iPhone dock connector, and enjoy music in clear, digital sound with full speed transfer. Your iPod/iPhone's battery will be charged during connection.



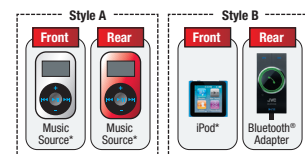
*Separated Variable-Color

Select from over 30,000 colors to match your car's illumination. Separate colors can be set for the keys and display, providing stylish coordination and easier operation. Day and night memory settings are available for auto dimmer.



*Dual AUX-IN

AUX inputs are available on both front and rear panels. By connecting the optional adapter, Bluetooth® Wireless Technology will be available on the headunit.



* Optional mini jack cable required

*3-Band Parametric iEQ

Adjusts the center frequency, bandwidth and levels at each of 3 bands. Plus 5 factory and 1 user EQ presets. With Pro mode, the EQ can customize the sound for your ears. A separate setting for the subwoofer level is also available.

Control Range	Bass:	60Hz, 80Hz, 100Hz, 200Hz
	Mid-range:	500Hz, 1kHz, 1.5kHz, 2.5kHz
	Treble:	10kHz, 12.5kHz, 15kHz, 17.5kHz
Level	-6~+6dB	
Q (band with)	0.75~2.0Q	

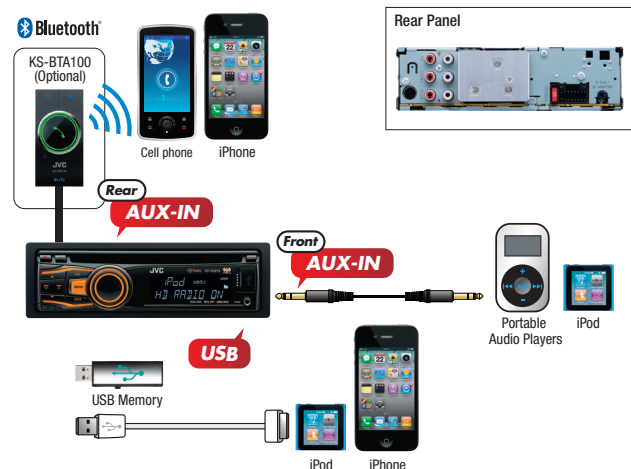
Key Specifications

Maximum Power Output	50W x 4
Continuous Power Output (RMS)	20W RMS x 4 Channels at 4Ω ≤
*1 Total Harmonic Distortion	1.0% THD*1 + N
HPF*2 (Front/Rear)	Off/On
LPF (Subwoofer)	off / 55 / 85 / 120Hz (-12dB/oct)
Line Pre-Output Terminals	3 (Front + Rear + Subwoofer)
Subwoofer Output with Level/Frequency Control	✓
Line Output Level	5.0V
Subwoofer Output Level	5.0V
Subwoofer Gain Control	INF - 0dB*3
Load Impedance	4Ω (4 - 8Ω allowable)
Line Output Impedance	≤ 600Ω

*2 Set according to LPF figures *3 MUTE / -14dB / -12dB / -10dB / -8dB / -6dB / -4dB / -2dB / 0dB

Dimensions (W x H x D)		
Installation Size	7 3/16" x 2 1/16" x 6 1/4"	182 x 52 x 158 mm
Panel Size	7 7/16" x 2 3/8" x 3/8"	188 x 59 x 8.5 mm
Detachable Face Plate	6 3/4" x 1 13/16" x 7/8"	170 x 46.4 x 20.5 mm

Connections



Quick Reference of iPod/iPhone Compatibility*1

	iPod 4th generation*2 (color display)	iPod 5th generation (video)	iPod nano 2nd generation*3 (aluminum)	iPod classic*4 (120GB 160GB 2009)	iPod nano 3rd generation (video)	iPod nano 4th generation (video)	iPod nano 5th generation (video camera)	iPod touch 4th generation*5 (8GB 32GB 64GB)	iPhone 3GS*6 (8GB 16GB 32GB)	iPod nano 6th generation (8GB 16GB)	iPhone 4 (16GB 32GB)
Playback Connection	N/A	✓USB	✓USB	✓USB	✓USB	✓USB	✓USB	✓USB	✓USB	✓USB	✓USB

*1 Please visit www.jvc.co.jp/english/car/ for iPod/iPhone compatibility details. *2 Same compatibility applies for the following 4th generation and earlier iPod models: iPod with dock connector, iPod mini, and iPod with color display. *3 Same compatibility applies for iPod nano (1st generation) *4 Same compatibility applies for iPod classic (160GB (2007) only). *5 Same compatibility applies for iPod touch (1st, 2nd, and 3rd generation) *6 Same compatibility applies for iPhone, and iPhone 3G.