

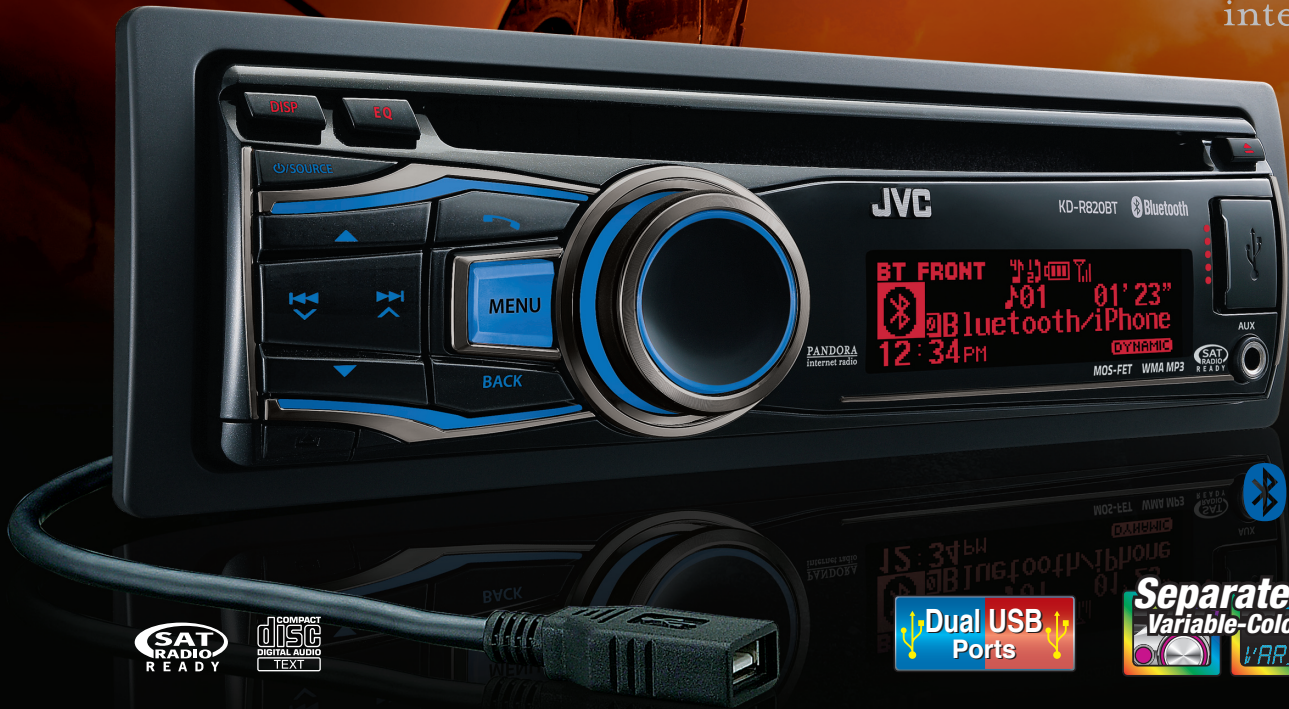
Made for
 iPod  iPhone

KD-R820BT

Bluetooth® Wireless Technology Dual USB/CD Receiver with Front AUX

PANDORA®
 internet radio

Headunits



 Bluetooth®



MP3/WMA WAV*

MOS-FET 50W x 4

20W x 4 RMS

2 Connections for iPod/iPhone

Application Mode for iPod/iPhone

iPod/iPhone Headunit 2-Way Control for iPod/iPhone

Full Digital Full Speed Charging 1.0A Support

Drive Change Mode



* Not Available on CD

Recommended Features



Bluetooth® Compatibility Check Mode available at Store

Key Benefits

The unit comes with front/rear USB inputs and a USB Bluetooth® adapter, offering audio entertainment and full-time Bluetooth® connection for two phones. You can even connect two iPod/iPhone players and enjoy music in USB full-speed digital transfer, play the sound of iPod/iPhone apps including Pandora Radio, and also charge the players. The Separated Variable-Color lets you customize the keys and display from 30,000 x 30,000 color combinations. Other features include TI/Burr-Brown 24-bit DAC, Front AUX-IN, HS-IVI tuner, and 3-band parametric iEQ. You can also enjoy HD Radio® and SAT Radio with optional tuners.

* Bluetooth® Wireless Technology (USB Bluetooth® Adapter & Wired MIC included)

Make hands-free calls or stream music with the included USB Bluetooth® adapter. The wired MIC can be placed at various settings, offering clear communication for Bluetooth® phone calls. You can even make 2-step quick calls on the headunit.



Wired MIC included



USB Bluetooth® adapter included

* Dual USB for iPod/iPhone

Connect your iPod/iPhone to the unit's USB port with the iPod/iPhone dock connector, and enjoy music in clear, digital sound with full-speed transfer. Your iPod/iPhone's battery will be charged during connection. With dual USB, you can use both front and rear ports to connect a USB Bluetooth® adapter and another device, or even two iPod/iPhone players at the same time. The audio files in your USB device can be easily accessed by PC-like folder structure.



* USB playback not supported for NTFS formatted devices. When partitions are created, only the first partition can be read.



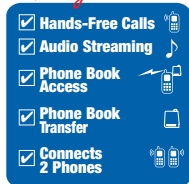
MOBILE ENTERTAINMENT

KD-R820BT Bluetooth® Wireless Technology Dual USB/CD Receiver with Front AUX

*Bluetooth® Compatible Functions

In addition to hands-free calling, voice recognition dialing, and audio streaming, you can transfer up to 400 contact numbers to the headunit. With PBAP compatible cell phones, you can access your phone book without transferring to the headunit. Two phones can be connected full time. Your cell phone's Bluetooth® compatibility can be checked at the store. The A to Z search for phone book provides quick access of the target number.

So Many Features!



*Connects 2 Phones

You can have two phones connected to Bluetooth® full time, with separate illumination colors and ring tones for distinction.

Calls to either phone can be received by a push of a key on the headunit.



*Separated Variable-Color

Select from over 30,000 colors to match your car's illumination. Separate colors can be set for the keys and display, providing stylish coordination and easier operation. Day and night memory settings are available for auto dimmer.



Over 30,000 Display Zone X Over 30,000 Control Zone



*Drive Change Mode (for Smartphones/BlackBerry®)

Listen to music from your choice of internal or external devices (SD/Music SD) on compatible BlackBerry® devices or other smartphones by connection to the unit's USB port.

- * Phone stays charged while connected
- * Switch between external and internal memory from receiver's controls
- * Play/Pause/Skip tracks from receiver or wireless remote control



*Application Mode for iPod/iPhone

You can enjoy JVC-original iPod/iPhone apps such as Drive Data etc., as well as play the sound from other apps including Pandora, with high current ready power supply.



Don't miss the details! Go to the feature page for JVC original app content

*USB Audio for iPod/iPhone

Connect your iPod/iPhone to the unit's USB port with the iPod/iPhone dock connector, and enjoy music in clear, digital sound with full speed transfer. Your iPod/iPhone's battery will be charged during connection.



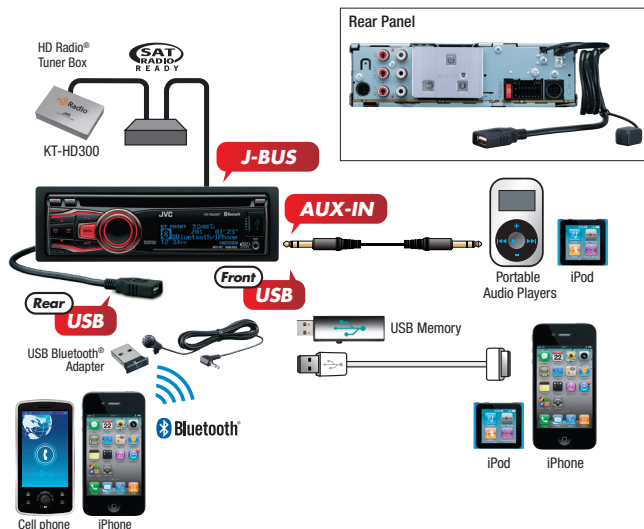
Key Specifications

Maximum Power Output	50W x 4
Continuous Power Output (RMS)	20W RMS x 4 Channels at 4Ω ≤
*1 Total Harmonic Distortion	1.0% THD*1 + N
HPF*2 (Front/Rear)	off / 62 / 95 / 135Hz (-12dB/oct)
LPF (Subwoofer)	off / 55 / 85 / 120Hz (-12dB/oct)
Line Pre-Output Terminals	3 (Front + Rear + Subwoofer)
Subwoofer Output with Level/Frequency Control	✓
Line Output Level	2.5V
Subwoofer Output Level	2.5V
Subwoofer Gain Control	INF - 0dB*3
Load Impedance	4Ω (4 - 8Ω allowable)
Line Output Impedance	≤ 600Ω

*2 Set according to LPF figures *3 MUTE / -14dB / -12dB / -10dB / -8dB / -6dB / -4dB / -2dB / 0dB

Dimensions (W x H x D)		
Installation Size	7 3/16" x 2 1/16" x 6 1/4"	182 x 52 x 158 mm
Panel Size	7 7/16" x 2 3/8" x 3/8"	188 x 59 x 8.5 mm
Detachable Face Plate	6 3/4" x 1 13/16" x 7/8"	170 x 46.4 x 20.5 mm

Connections



Quick Reference of iPod/iPhone Compatibility*1

	iPod 4th generation*2 (color display) 40GB 60GB	iPod 5th generation (video) 60GB 80GB	iPod nano 2nd generation*3 (aluminum) 2GB 4GB 8GB	iPod classic*4 120GB 160GB (2009)	iPod nano 3rd generation (video) 4GB 8GB	iPod nano 4th generation (video) 8GB 16GB	iPod nano 5th generation (video camera) 8GB 16GB	iPod touch 4th generation*5 8GB 32GB 64GB	iPhone 3GS*6 8GB 16GB 32GB	iPod nano 6th generation 8GB 16GB	iPhone 4 16GB 32GB
Playback Connection	N/A	✓USB	✓USB	✓USB	✓USB	✓USB	✓USB	✓USB	✓USB	✓USB	✓USB

*1 Please visit www.jvc.co.jp/english/car/ for iPod/iPhone compatibility details. *2 Same compatibility applies for the following 4th generation and earlier iPod models: iPod with dock connector, iPod mini, and iPod with color display. *3 Same compatibility applies for iPod nano (1st generation) *4 Same compatibility applies for iPod classic (160GB (2007) only). *5 Same compatibility applies for iPod touch (1st, 2nd, and 3rd generation) *6 Same compatibility applies for iPhone, and iPhone 3G.