

# KW-HDR720

2-DIN HD Radio™/USB/CD Receiver with Dual AUX

Made for  
iPod iPhone



**HD Radio®**  
This HD Radio receiver enables:

PSD

HD2/HD3

Digital Sound

iTunes® Tagging

Headunits



## Built-in HD Radio Tuner

Enjoy a multitude of HD Radio programs in premium digital sound, without having to connect external tuners. FM radio sounds equivalent to CD quality, and AM as good as FM.

**HD Radio®**



## Recommended Features



## Key Benefits

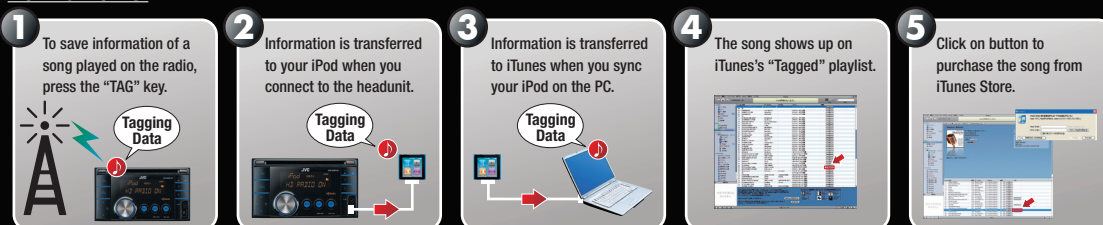
The 2-DIN unit has built-in HD Radio, letting you enjoy a multitude of programs in quality sound, while the DiAS tuner offers premium FM radio broadcast. With dual AUX inputs, you can easily connect digital audio players as well as an optional Bluetooth® adapter. Simple operation is available by using the menu key and the volume knob. MOS-FET power amp, 24-bit DAC, and High-Pass Filter provide superior sound, and the sound can be tweaked with 3-band parametric iEQ.



## iTunes Tagging

iTunes Tagging lets you "tag" songs playing on the radio, so you can purchase later from the iTunes store.

### How It Works:



**JVC**

**MOBILE ENTERTAINMENT**

# KW-HDR720 2-DIN HD Radio™/USB/CD Receiver with Dual AUX

## \*Ready for Bluetooth® Adapter (KS-BTA100)

With the optional KS-BTA100 adapter, you can enjoy the safety and convenience of Bluetooth® Wireless Technology such as hands-free calling, voice dialing, and audio streaming. The compact all-in-one adapter has microphone/keys/LED functions, and can be easily connected via the AUX.



**Hands-Free Calls**  
- Voice Dialing

**- Redial Call**  
- Private Mode

**Audio Streaming**  
Noise/Echo Cancellation

## \*External Mode for iPod/iPhone

You can listen to the sound of iPod/iPhone apps, such as games, web radio, and YouTube, with high current ready power supply.

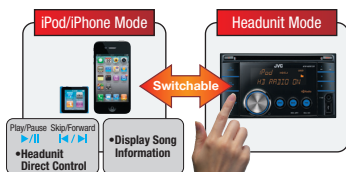
\* For sound only.



## \*2-Way Control for iPod/iPhone

The 2-way control for iPod/iPhone lets you easily operate on your iPod/iPhone or the headunit. Just hold down the BACK key to switch operation. The basic functions can be controlled on the headunit even during iPod/iPhone mode. The song information is shown on the display for both modes.

\* Compatibility with 2-way control for iPod/iPhone differs by model. Please visit [www.jvc.co.jp/english/car/](http://www.jvc.co.jp/english/car/) for details.



## \*Steering Wheel Remote Ready

With an optional adapter, you can control an advanced JVC headunit from the steering wheel remote control that comes factory standard with your car.



## \*USB Audio for iPod/iPhone and Smartphones

Connect your iPod/iPhone or other smartphones to the unit's USB port, and enjoy music in clear, digital sound with full-speed transfer. Your device's battery will be charged during connection.



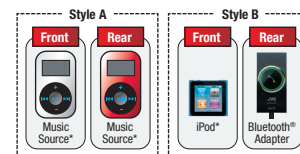
## \*Separated Variable-Color

Select from over 30,000 colors to match your car's illumination. Separate colors can be set for the keys and display, providing stylish coordination and easier operation. Day and night memory settings are available for auto dimmer.



## \*Dual AUX-IN

AUX inputs are available on both front and rear panels. By connecting the optional adapter, Bluetooth® Wireless Technology will be available on the headunit.



\* Optional mini jack cable required

## \*3-Band Parametric iEQ

Adjusts the center frequency, bandwidth and levels at each of 3 bands. Plus 5 factory and 1 user EQ presets. With Pro mode, the EQ can customize the sound for your ears. A separate setting for the subwoofer level is also available.

Control Range	Bass:	60Hz	80Hz	100Hz	200Hz
	Mid-range:	500Hz	1kHz	1.5kHz	2.5kHz
	Treble:	10kHz	12.5kHz	15kHz	17.5kHz
Level	-6 ~ +6 level (-12 ~ +12dB)				
Q (band with)	0.75 ~ 2.0Q				

## Key Specifications

Maximum Power Output	50W x 4
Continuous Power Output (RMS)	20W RMS x 4 Channels at 4Ω ≤
*1 Total Harmonic Distortion	1.0% THD*1 + N
HPF*2 (Front/Rear)	Off/On
LPF (Subwoofer)	off / 55 / 85 / 120Hz (-12dB/oct)
Line Pre-Output Terminals	3 (Front + Rear + Subwoofer)
Subwoofer Output with Level/Frequency Control	✓
Line Output Level	2.5V
Subwoofer Output Level	2.5V
Subwoofer Gain Control	INF - 0dB*3
Load Impedance	4Ω (4 - 8Ω allowable)
Line Output Impedance	≤ 600Ω

\*2 Set according to LPF figures \*3 MUTE / -14dB / -12dB / -10dB / -8dB / -6dB / -4dB / -2dB / 0dB

Dimensions (W x H x D)		
Installation Size	7 3/16" x 4 3/8" x 6 5/16"	182 x 111 x 159.5 mm
Panel Size	7 7/16" x 6 5/8" x 15/16"	188 x 116.8 x 22.5 mm
Detachable Face Plate	-	-

## Connections

