

# KD-X80BT

Bluetooth® Wireless Technology  
Digital Media Receiver with Dual USB and AUX

Made for  
iPod iPhone



works with  
**PANDORA**



## Recommended Features



## Key Benefits

JVC's digital media receiver with advanced flip-down face design and features offer integrated performance with smartphones, and connection with USB, AUX, or Bluetooth®. The included Bluetooth® adapter can be plugged to one of the dual USB inputs. 1A USB connection for smartphones features Drive Change Mode for BlackBerry® and Application Mode for iPod/iPhone. With Smart Remote for Android, you can use your device as a remote for audio playback. Control for Pandora Radio is available on the headunit via Bluetooth® for Android/BlackBerry®, and USB for iPhone. You can customize the keys and display from over 30,000 colors with Separated Variable-Color. The unit also has 3-band parametric iEQ, full dot LCD, and is Steering Wheel Remote ready.



## \*Smart Remote for Android via Bluetooth®

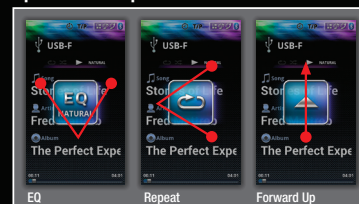
Music sources on the headunit such as CD, radio, or USB audio can be displayed on Android with Bluetooth® Serial Port Profile. The Android phone becomes a remote control with headunit information shown on the screen, operable with finger gestures – providing safe and easy operation without looking at the headunit's monitor.



Bluetooth® Serial Port Profile



## Operation Examples



MOBILE ENTERTAINMENT

Headunits

Digital Media Receiver

# KD-X80BT

Bluetooth® Wireless Technology Digital Media Receiver  
with Dual USB and AUX

## \*Bluetooth® Compatible Functions

In addition to hands-free calling, voice recognition dialing, audio streaming/control, and remote control features with your smartphone, you can transfer up to 400 contact numbers to the headunit. With PBAP compatible cell phones, you can access your phone book without transferring to the headunit. Two phones can remain connected continuously. The features are also available for smartphones.



*So Many Features!*

- ✓ Hands-Free Calls
- ✓ Audio Streaming & Control
- ✓ Phone Book Access
- ✓ Phone Book Transfer
- ✓ 2 Phones Full-Time Connection



## \*Pandora via Bluetooth® (for Android/BlackBerry®)

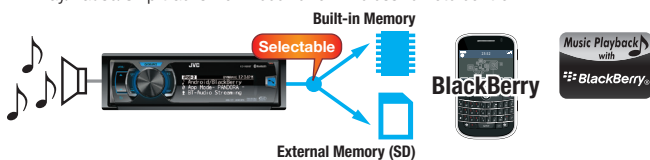
Download the Pandora app on to your Android/BlackBerry® and make Bluetooth® connection to the headunit. The Serial Port Profile (SPP) lets you control as well as listen to Pandora Radio on the headunit.



## \*Drive Change Mode for BlackBerry®

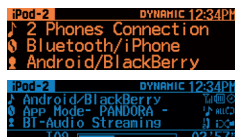
Listen to music from either internal (built-in memory) or external (SD) sources on a compatible BlackBerry®, via USB connection. Some Android devices are also compatible.

- \* Phone stays charged while connected
- \* Switch between external and internal memory from receiver's controls
- \* Play/Pause/Skip tracks from receiver or wireless remote control



## \*Customizable LCD with Dot Matrix

In addition to positive/negative display and Variable-Color Illumination, you can customize the display format to your taste.



## \*Application Mode for iPod/iPhone

You can enjoy updated features of the JVC Auto Drive Router app for Drive Data and Here I am, as well as play the sound from other apps including Pandora, with high current power supply.



Don't miss the details! Go to the feature page for JVC original app content

## \*Apps Control for iPod Mode

Song information display and certain control features are available on the headunit for some apps, when the app is launched during iPod Mode.



## \*Dual 1A USB for iPod/iPhone and Smartphones

Connect your iPod/iPhone or other smartphones to the unit's 1A USB port, and enjoy music in clear, digital sound with full-speed transfer. Your device's battery will be charged during connection. With dual USB, you can use both front and rear ports to connect a USB Bluetooth® adapter and another device, or even two players/smartphones at the same time. The audio files in your USB device can be easily accessed by PC-like folder structure.

\* USB playback not supported for NTFS formatted devices. When partitions are created, only the first partition can be read.



## Key Specifications

Maximum Power Output	50W x 4
Continuous Power Output (RMS)	20W RMS x 4 Channels at 4Ω ≤ 1.0% THD*1 + N
HPF*2 (Front/Rear)	off/100/120/150Hz (-12 dB/oct)
LPF (Subwoofer)	off/55/85/120Hz (-12dB/oct)
Line Pre-Output Terminals	3 (Front + Rear + Subwoofer)
Subwoofer Output with Level/Frequency Control	✓
Line Output Level	4.8V
Subwoofer Output Level	4.8V
Subwoofer Gain Control	INF - 0dB*3
Load Impedance	4Ω (4 - 8Ω allowable)
Line Output Impedance	≤ 600Ω

\*1 Total Harmonic Distortion \*2 Set according to LPF figures  
\*3 MUTE / -14dB / -12dB / -10dB / -8dB / -6dB / -4dB / -2dB / 0dB

<b>Dimensions (W x H x D)</b>		
Installation Size	7 3/16" x 2 1/16" x 6 5/16"	181.6 x 51.6 x 159.2 mm
Panel Size	7 7/16" x 2 3/8" x 9/16"	188 x 58.5 x 12.8 mm
Detachable Face Plate	6 11/16" x 1 13/16" x 13/16"	169 x 44.5 x 19.7 mm

## Connections

