

## Firmware Upgrade for DLA-X500RBU, DLA-X700RBU, DLA-X900RBU

### **Advanced Notice**

Update procedure is different depending on firmware version.

- **r1178.n<sup>(\*1)</sup>:**  
Please apply all steps in the manual.
- **r1210.n<sup>(\*1)</sup> , r1211.m<sup>(\*2)</sup>**  
Confirm the prerequisite (on page 5, Section B.).  
Connect the RS-232C cross cable (on page 6, Section C.).  
Then go directly to Page 9, “Second Update Step” (on Section E. Update)  
(You can skip the steps related to Flash Magic Program.)

(\*1) “n”: Any number

(\*2) “m”: Any number less than 6

## Computer requirements:

- Windows PC with .NET Framework 4.0 installed  
\*Tested with Windows 7, Windows Vista SP1 or later, Windows XP (Service Pack 3)

## Procedure Outline:

- Prerequisite:** Download and extract the JVC update file. Install the Flash Magic program to your PC.
- Prerequisite:** Verify that the ILAFPJ2013\_upgrader program can be run (Microsoft .NET Framework 4.0 is required).
- Update Preparation:** Connect the RS-232C cross cable.
- Update Preparation:** Make sure the projector is in update mode.
- Update:** 2-Step update. First update with the Flash Magic program, then second update with the ILAFPJ2013\_upgrader program.
- Verification:** Verify the Firmware version.

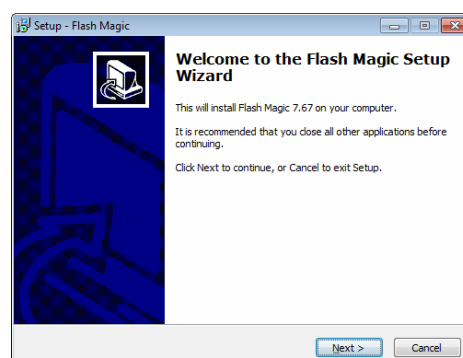
## Procedure Details:

### A. Prerequisite: *Download and extract the JVC update file. Install the Flash Magic program to your PC.*

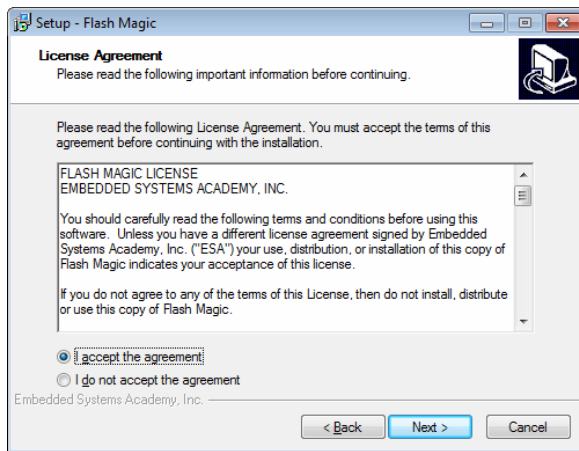
1. Download and extract the JVC update file to the Desktop. This creates the following folders:

- “Flash Magic” folder contains the Flash Magic installation program.
- “JVC2013UPDATE” folder contains the firmware update files and the “upgrader\_1button” sub-folder, which contains the “ILAFPJ2013\_upgrader” program.

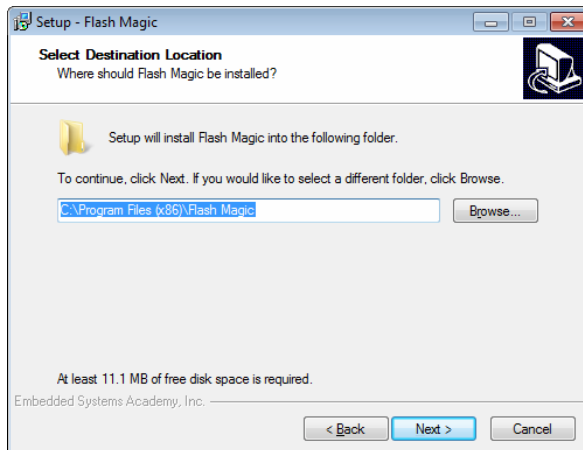
2. Double-click the “FlashMagic.exe” file in the “Flash Magic” folder to launch the setup and then click on “Next”:



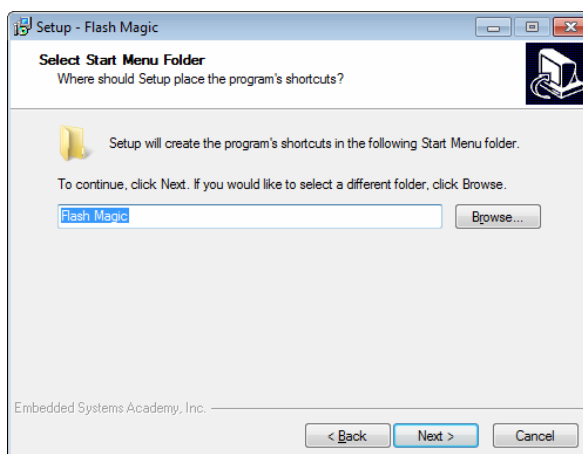
3. Select "I accept the agreement" and click on Next:



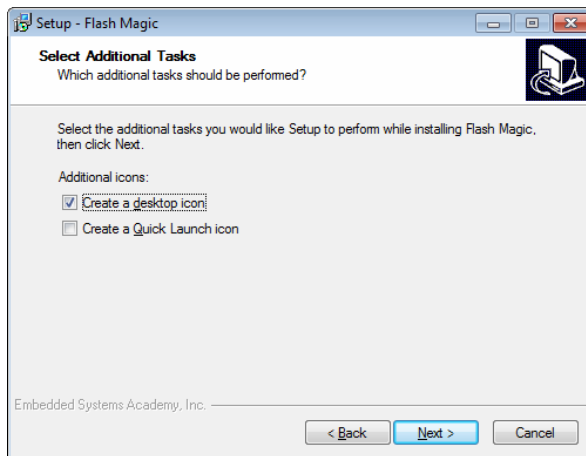
4. Click on Next:



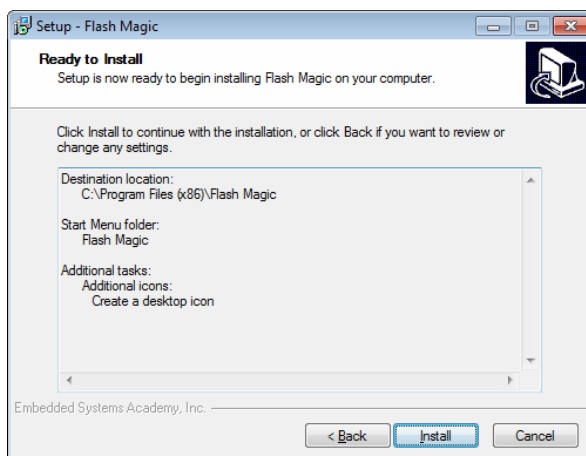
5. Click on Next:



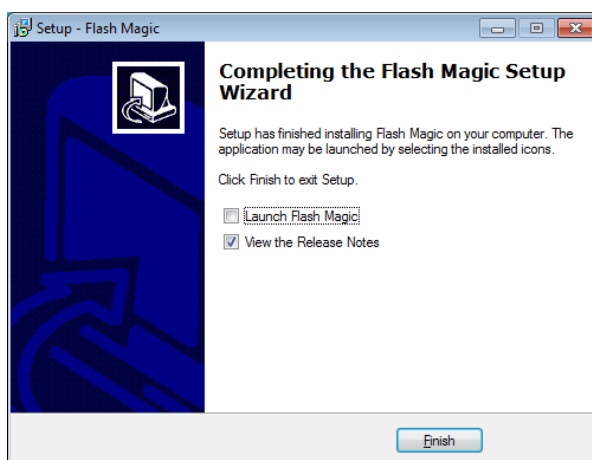
6. Select “Create a desktop icon” and click on Next:



7. Click on Install:

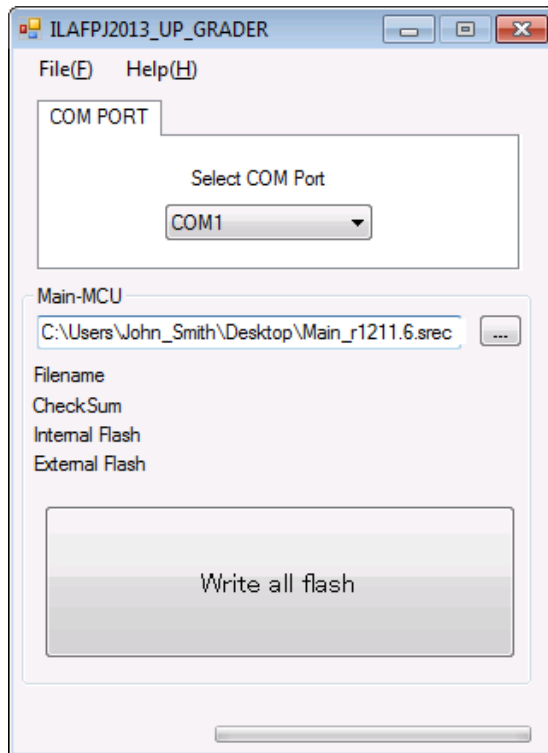


8. Click on Finish



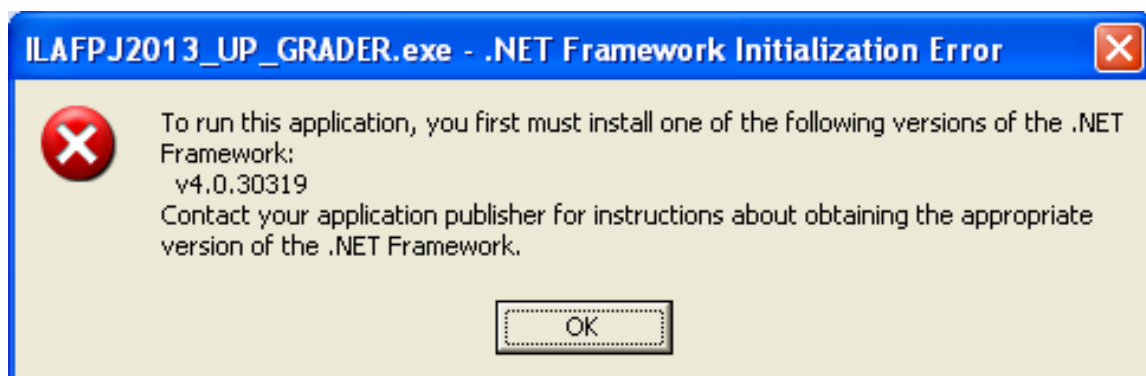
**B. Prerequisite: Verify that the ILAFPJ2013\_upgrader program can be run.**

1. Double click the “**ILAFPJ2013\_UP\_GRADER.exe**” file in the “upgrader\_1button” sub-folder and the window below should appear:



If so, then you may close this window and proceed to the next step.

However, if you receive the following error below, then you must first download and install the “.NET Framework 4 Client Profile (Standalone Installer)” from Microsoft before proceeding.



**C. Update Preparation: *Connect the RS-232C cross cable.***

1. Make sure the projector is OFF, with the AC cord unplugged.
2. Connect your PC to the Projector with an RS-232C null-modem (cross) cable.

\* In the case that your PC does not have an RS-232C serial port, you will need to use a USB-to-RS232C adapter in addition.

A quality adapter is required that is capable of both positive and negative voltage levels. Some cheaper adapters may only provide positive voltage levels.

\*Tested with Tripp Lite Keyspan (model#: USA-19HS) & Staples USB-Serial Adapter (Item: 837560)



**D. Update Preparation: *Make sure the projector is in update mode for Flash Magic update.***

To get the projector into Update Mode, press and hold the INPUT button while inserting the AC cord. After the AC cord is inserted, keep holding the INPUT button for approximately 5 seconds, then release the INPUT button.



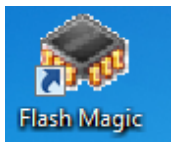
The front LEDs will all be OFF and only the orange LED indicator on the LAN connector will be ON. This indicates the projector is in Update Mode:



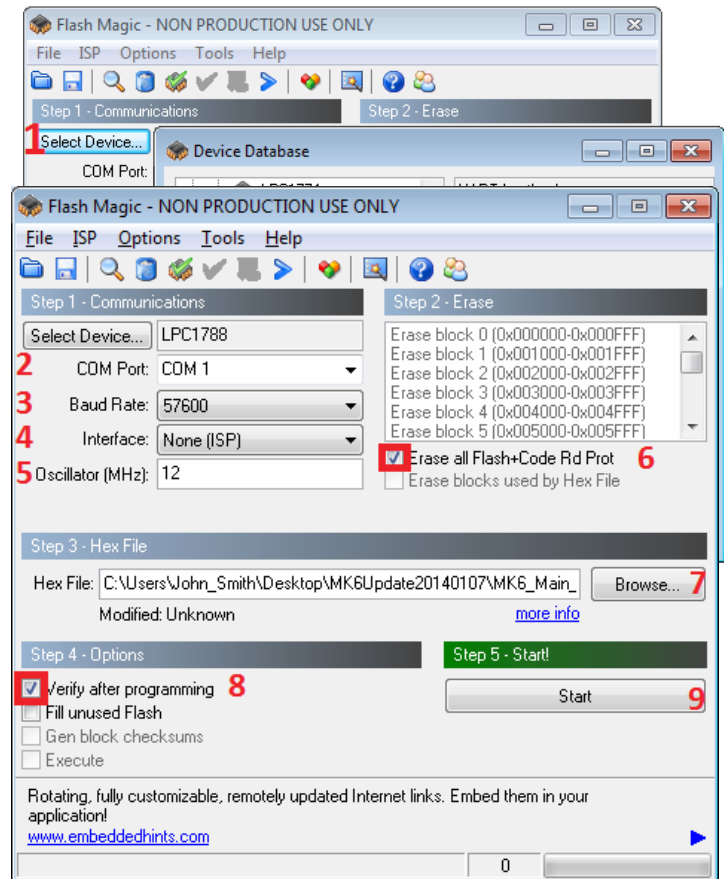
## E. Update: *2-Step Update.*

### *First Update Step*

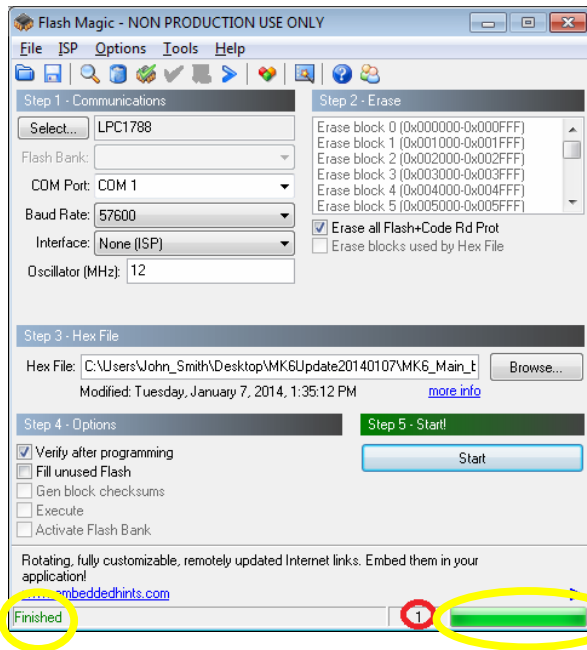
Double-click on the Flash Magic icon on your desktop to open a Flash Magic window.



1. Click on the “Select Device” button, choose “LPC1788” in the ARM Cortex folder, then click the “OK” button:
2. Select the appropriate COM port.
3. Select “57600” for the Baud Rate.
4. Select “None (ISP)” for the Interface.
5. Type in “12” in the Oscillator (Mhz) field.
6. Check the box for “Erase all Flash+Code Rd Prot”
7. Click on “Browse” and select the “**Main\_boot\_ver2.hex**” update file in the “JVC2013UPDATE” folder.
8. Check the box for “Verify after programming”
9. Click on the “Start” button



\*This first update will take approximately 4 minutes to complete.



When completed, “Finished” will display on the bottom status bar.

The update counter red-circled below will show a ‘1’ if the update is successful. (The counter is incremented by one for each successful update).

**Note:**  
When several units are updated in a row, the message of "Finished", and green bar on the bottom (yellow-circled) would appear for very short moment only, from the 2<sup>nd</sup> unit. Only way to distinguish the update is done correctly is the change of counter number on the bottom.

10. Close the Flash Magic program.

11. Unplug the AC cord and wait a few seconds for the orange LED indicator on the LAN connector to turn OFF.



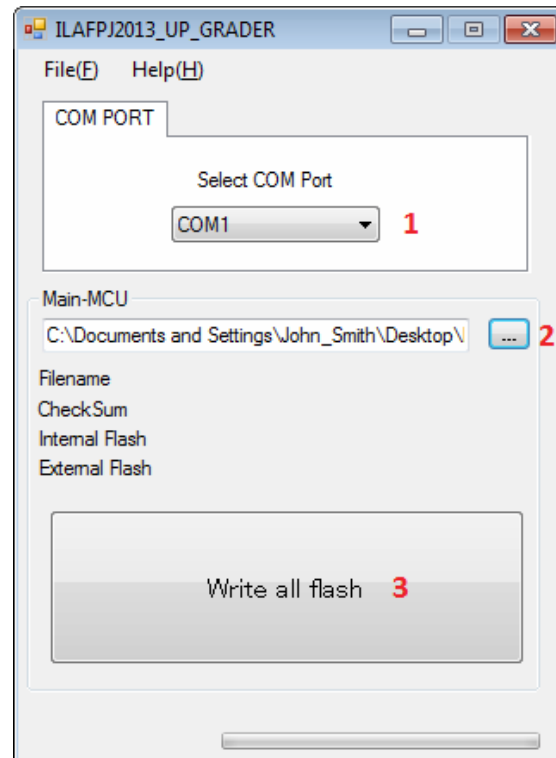


## Second Update Step

Starting with the AC cord disconnected, next plug in the AC cord.

Double click the “**ILAFPJ2013\_UP\_GRADER.exe**” file in the “upgrader\_1button” sub-folder. The window below should appear:

1. Select the appropriate COM port.
2. Click the “...” button and select the “**Main\_r1211.6.srec**” update file in the “JVC2013UPDATE” folder.
3. Click the “Write all flash” button.

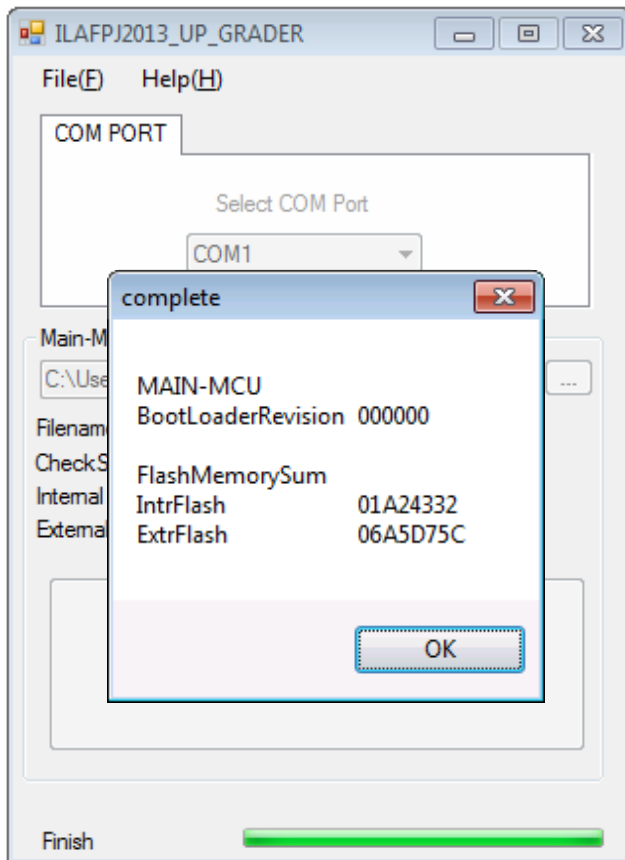


The STANDBY indicator will change to green during the update:



This second update will take approximately 3 minutes to complete.

After the second update is finished, a complete window will pop-up. Also, the projector will be in STANDBY mode, with only the STANDBY LED lit.

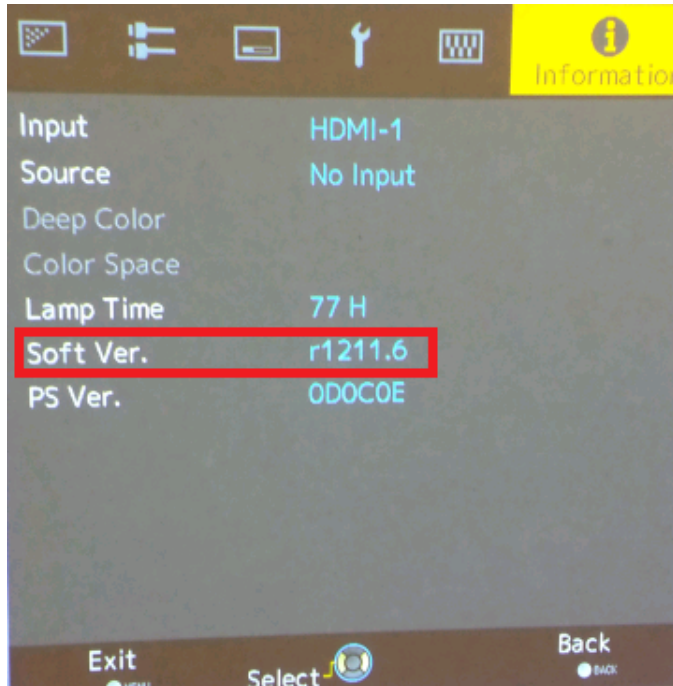


4. Click the 'OK' button in the complete window, and then close the ILAFPJ2013\_UP\_GRADER program.
5. Unplug the AC cord and wait a few seconds for the STANDBY LED to turn off.
6. Disconnect the RS-232C cable from the projector.
7. Plug in the AC cord and power ON the projector.

**F. Verification: *Verify the Firmware version.***

Display the Information tab in the User menu.

Check that the “Soft Ver.” displays version **r1211.6**



\*Note: In the case of an error, please retry the procedure from the beginning.

If you require assistance, you may contact our Support Line:

(800) 252-5722